

CHILLICOTHE

ROSS CO (RZT)(KRZT) 6 NW UTC-5(-4DT) N39°26.43' W83°01.38'

725 B NOTAM FILE DAY

RWY 05-23: H5405X100 (ASPH) S-75, D-100 MIRL 0.4% up SW

RWY 05: REIL. PAPI(P4L)—GA 3.0° TCH 44'. Trees.

RWY 23: REIL. PAPI(P4L)—GA 3.0° TCH 45'. Trees.

SERVICE: S2 FUEL 100LL, JET A LGT ACTIVATE REIL Rwy 05 and 23; PAPI Rwy 05 and Rwy 23; MIRL Rwy 05-23—123.0.

AIRPORT REMARKS: Attended 1300-2200Z. Unattended New Years, July 4th, Thanksgiving, and Christmas. Ocnl deer, birds, and other wildlife on and in/ov arpt. Transient hangar storage: prior coord. required.

AIRPORT MANAGER: 740-773-4788

WEATHER DATA SOURCES: AWOS-3 119.225 (740) 779-1364. SAWRS AVBL 1300-2300Z & UPON REQUEST CALL 740-773-4788.

COMMUNICATIONS: CTAF/UNICOM 122.8

YELLOW BUD RCO 112.5T (DAYTON RADIO)

® COLUMBUS APP/DEP CON 134.0

CLEARANCE DELIVERY PHONE: For CD ctc Columbus Apch at 614-338-8537.

RADIO AIDS TO NAVIGATION: NOTAM FILE DAY.

APPLETON (H) (H) VORTAC 116.7 APE Chan 114 N40°09.06' W82°35.30' 211° 47.1 NM to fld. 1354/6W.

TACAN AZM/DME unusable:

183°-188° byd 20 NM blo 3,000'

YELLOW BUD (T) VORW 112.5 XUB N39°31.61' W82°58.68' 207° 5.6 NM to fld. 689/5W.

CINCINNATI
H-10G, L-29A
IAP

CINCINNATI MUNI/LUNKEN FLD (LUK)(KLUK) 3 SE UTC-5(-4DT) N39°06.20' W84°25.12'

483 B LRA Class IV, ARFF Index A NOTAM FILE LUK

RWY 03R-21L: H6101X150 (ASPH-GRVD) S-60, D-70, 2S-88, 2D-140 PCN 42 R/C/X/T HIRL

RWY 03R: REIL. PAPI(P4R)—GA 3.0° TCH 44'. RVR-R Tree.

RWY 21L: MALSR. PAPI(P4L)—GA 3.0° TCH 39'. RVR-T Trees.

RWY 07-25: H5127X100 (ASPH-GRVD) S-11, D-20, 2D-55 PCN 38 R/C/X/T MIRL

RWY 07: Thld dspld 439'. Tree.

RWY 25: VASI(V4L)—GA 3.0° TCH 40'.

RWY 03L-21R: H3801X100 (ASPH) S-11 PCN 6 F/C/Y/T MIRL
RWY 03L: Trees.

RWY 21R: VASI(V4L)—GA 4.0° TCH 46'. P-line.

RUNWAY DECLARED DISTANCE INFORMATION

RWY 03R:TORA-6101 TODA-6101 ASDA-6101 LDA-6101

RWY 21L:TORA-6101 TODA-6101 ASDA-6101 LDA-6101

SERVICE: S4 FUEL 100LL, JET A+ 0X1 LGT When twr clsd ACTIVATE or incr instst MALSR Rwy 21L, HIRL Rwy 03R-21L—CTAF. HIRL Rwy 03R-21L preset on med ints. Rwy 03L-21R and Rwy 07-25 PCL unavbl. Rwy 03R PAPI unusbl byd 7° left of cntrln. Rotating bcn located 1.7 NM E of arpt.

NOISE: Noise abatement procs in efct call amgr. Acft maint runups rstrd btn 0200-1200Z.

AIRPORT REMARKS: Attended continuously. Deer and birds on and in/ov arpt. Fuel A+ C513-871-2020. When twr closed use CTAF. Clsd to scheduled ACR ops greater than 9 pax seats. 48 hr PPR for unsched ACR ops with gtr than 30 passenger seats call amgr. Rwy 03L-21R clsd to unsked acf ops gtr than 30 pax seats. Rwy 07-25 clsd to unsked acf ops gtr than 30 pax seats. AER Rwy 25 and Rwy 21L are closely lctd. Verify correct rwy with compass hdg bfr dep. Twy D, E, G, & H clsd to unsked acf ops gtr than 30 pax seats. Twy H not visible from twr, contact ground control. Arpt sfc cond unmon dly 0400-1200Z, Nov 1-Mar 31. Rwy 03L-21R cracks and surface variations. Ldg fee. Flight Notification Service (ADCUS) available.

AIRPORT MANAGER: 513-352-6340

WEATHER DATA SOURCES: ASOS (513) 321-6291

COMMUNICATIONS: CTAF 118.7 ATIS 120.25 UNICOM 122.95

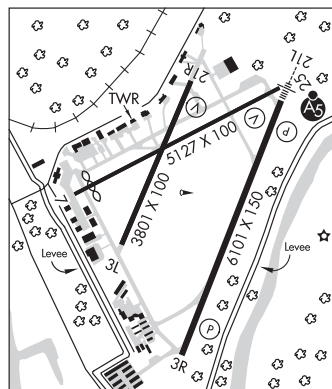
® APP/DEP CON 121.0

LUNKEN TOWER 118.7 133.925 (1200-0400Z) CLNC DEL 124.9 (use when twr closed)

GND CON/CLNC DEL 121.96

AIRSPACE: CLASS D svc 1200-0400Z; other times CLASS E.

VOR TEST FACILITY (VOT) 108.4



CINCINNATI
H-10G, L-27E
IAP, AD

CONTINUED ON NEXT PAGE

CONTINUED FROM PRECEDING PAGE

RADIO AIDS TO NAVIGATION: NOTAM FILE CVG.

(L) (L) VORTACW 117.3 CVG Chan 120 N39°00.96' W84°42.20' 072° 14.3 NM to fld. 878/4W.

ILS/DME 110.9 I-LUK Chan 46 Rwy 21L. Class IA. Localizer backcourse unusable byd 10 NM. ILS/DME unmonitored when twr clsd. DME backcourse unusable byd 10 NM. DME unusable byd 25° left of course. DME backcourse unusable byd 10° left and 10° right of course. Localizer backcourse unusable byd 15° left and 15 right of course.

COMM/NAV/WEATHER REMARKS: Emerg frequency 121.5 not avbl at twr.

CINCINNATI WEST (See HARRISON on page 281)

CINCINNATI/NORTHERN KENTUCKY INTL (See COVINGTON on page 270)

CIRCLEVILLE

PICKAWAY CO MEML (CYO)(KCYO) 5 S UTC-5(-4DT) N39°30.96' W82°58.93'

CINCINNATI

685 B NOTAM FILE DAY

L-29A

RWY 01-19: H4346X75 (ASPH) S-30, D-40 MIRL 0.5% up N

IAP

RWY 01: Trees.

RWY 19: REIL. PAPI(P4R)—GA 3.0° TCH 24'.

SERVICE: FUEL 100LL, JET A LGT ACTIVATE REIL Rwy 19; PAPI Rwy 19; MIRL—CTAF.

AIRPORT REMARKS: Attended Mon-Sat 1300-1900Z†, Sun 1300-1700Z†. Fuel available 24/7 with credit card.

AIRPORT MANAGER: 740-412-1128

COMMUNICATIONS: CTAF/UNICOM 122.7

YELLOW BUD RCO 112.5T (DAYTON RADIO)

® COLUMBUS APP/DEP CON 134.0

CLEARANCE DELIVERY PHONE: For CD ctc Columbus Apch at 614-338-8537

RADIO AIDS TO NAVIGATION: NOTAM FILE DAY.

APPLETON (H) (H) VORTAC 116.7 APE Chan 114 N40°09.06' W82°35.30' 212° 42.2 NM to fld. 1354/6W.

TACAN AZM/DME unusable:

183°-188° byd 20 NM blo 3,000'

YELLOW BUD (T) VORW 112.5 XUB N39°31.61' W82°58.68' at fld. 689/5W.

CLERMONT CO (See BATAVIA on page 254)