

**CHICAGO O'HARE INTL** (ORD)(KORD) 14 NW UTC-6(-5DT) N41°58.62' W87°54.49'

**CHICAGO**

680 B LRA Class I, ARFF Index E NOTAM FILE ORD

**COPTER**

**RWY 10L-28R:** H13000X150 (ASPH-CONC-GRVD) S-100, D-185,

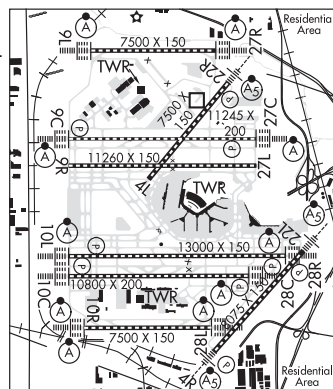
**H-5E, L-28H, A**

**RWY 10L:** ALSF2. TDZL. PAPI(P4L)—GA 3.0° TCH 74'.

**IAP, AD**

**RWY 10L:** ALSF2. TDZL. PAPI(P4L)—GA 3.0° TCH 74'. RVR-TMR 0.3% down.

**RWY 28R:** ALSF2. TDZL. PAPI(P4L)—GA 3.0° TCH 70'. RVR-TMR Trees.



**RWY 09R-27L:** H11260X150 (ASPH-CONC-GRVD) S-100, D-210, 2S-175, 2D-350 PCN 108R/C/W/U HIRL CL

**RWY 09R:** TDZL. Road.

**RWY 27L:** TDZL.

**RWY 09C-27C:** H11245X200 (CONC-GRVD) S-120, D-250, 2D-550, 2D/2D2-1120 PCN 131R/C/W/T HIRL CL

**RWY 09C:** ALSF2. TDZL. PAPI(P4L)—GA 3.0° TCH 72'. RVR-TMR Antenna. 0.3% down.

**RWY 27C:** ALSF2. TDZL. PAPI(P4L)—GA 3.0° TCH 75'. RVR-TMR

**RWY 10C-28C:** H10800X200 (CONC-GRVD) S-75, D-135, 2D-375, 2D/2D2-902 PCN 96 R/C/W/T HIRL CL

**RWY 10C:** ALSF2. TDZL. PAPI(P4L)—GA 3.0° TCH 75'. RVR-TMR

**RWY 28C:** ALSF2. TDZL. PAPI(P4L)—GA 3.0° TCH 80'. RVR-TMR

**RWY 04R-22L:** H8075X150 (ASPH-GRVD) S-100, D-200, 2S-175, 2D-350 PCN 108R/C/W/U HIRL CL

**RWY 04R:** MALSR. TDZL. PAPI(P4R)—GA 3.0° TCH 67'. RVR-TMR 0.3% down.

**RWY 22L:** MALSR. TDZL. PAPI(P4L)—GA 3.0° TCH 73'. RVR-TMR Trees.

**RWY 04L-22R:** H7500X150 (ASPH-GRVD) S-100, D-185, 2D-350 PCN 108R/C/W/U HIRL CL

**RWY 22R:** MALSR. TDZL. PAPI(P4L)—GA 3.0° TCH 69'. RVR-TR Trees.

**RWY 09L-27R:** H7500X150 (CONC-GRVD) S-75, D-210, 2D-500, 2D/2D2-913 PCN 91 R/B/W/T HIRL CL

**RWY 09L:** ALSF2. TDZL. RVR-TMR Tower.

**RWY 27R:** ALSF2. TDZL. RVR-TMR Bldg.

**RWY 10R-28L:** H7500X150 (CONC-GRVD) S-120, D-250, 2D-550, 2D/2D2-1120 PCN 104R/B/W/U HIRL CL 0.3% up W

**RWY 10R:** ALSF2. TDZL. RVR-TMR Tree.

**RWY 28L:** ALSF2. TDZL. RVR-TMR

**LAND AND HOLD-SHORT OPERATIONS**

LDG RWY	HOLD-SHORT POINT	AVBL LDG DIST
RWY 09C	TWY TT	8830
RWY 10C	TWY GG	9610
RWY 10L	TWY Y	12156
RWY 27C	TWY KK	9725
RWY 28C	TWY Z	9610

**RUNWAY DECLARED DISTANCE INFORMATION**

RWY 04L:	TORA-7500	TODA-7500	ASDA-7500
RWY 04R:	TORA-8075	TODA-8075	ASDA-8075 LDA-8075
RWY 09C:	TORA-11245	TODA-11245	ASDA-11245 LDA-11245
RWY 09L:	TORA-7500	TODA-7500	ASDA-7500 LDA-7500
RWY 10C:	TORA-10801	TODA-10801	ASDA-10540 LDA-10540
RWY 10L:	TORA-13000	TODA-13000	ASDA-13000 LDA-12246
RWY 10R:	TORA-7500	TODA-7500	ASDA-7500 LDA-7500
RWY 22L:	TORA-8075	TODA-8075	ASDA-8075 LDA-8075
RWY 22R:			LDA-7300
RWY 27C:	TORA-11245	TODA-11245	ASDA-11245 LDA-11245
RWY 27R:	TORA-7500	TODA-7500	ASDA-7500 LDA-7500
RWY 28C:	TORA-10801	TODA-10801	ASDA-10801 LDA-10801
RWY 28L:	TORA-7500	TODA-7500	ASDA-7500 LDA-7500
RWY 28R:	TORA-13000	TODA-13000	ASDA-13000 LDA-13000

**ARRESTING GEAR/SYSTEM**

**RWY 04R:** EMAS

**RWY 22L:** EMAS

CONTINUED ON NEXT PAGE

## CONTINUED FROM PRECEDING PAGE

**SERVICE:** S4 FUEL 100LL, JET A OX1, 2, 3

**NOISE:** Noise abatement proc in effect from 0400Z to 1300Z; ctc amgr 773-686-2255.

**AIRPORT REMARKS:** Special Air Traffic Rules—Part 93. Attended continuously. Birds on and in/ov arpt. Pyrotechnics and bird cannons in use. Rwy 4L CLOSED to arr; Rwy 22R CLOSED to dep. Rwy 09R-27L clsd for const. Triple dual tandem 690000 lbs; dual tandem w/dual wheel (2D/D1) 633000 lbs. PAEW near various twys. ASDE-X in use. Rwy status lgts are in opn. Opr transponders with altitude reporting mode and ADS-B (if equipped) enabled on all airport surfaces. Mag deviation psbl imt W of Twy Y and Rwy 22L apch on Twy N. Line Up and Wait Authorization in effect btn SS and SR at the flwg ints: Rwy 28R at Twy GG, Twy EE and Twy N5; Rwy 10L at Twy DD and Twy CC and Twy BB. Rwy 27C at Twy TT; Rwy 9C at Twy FF; Rwy 27L at Twy TT; Rwy 9R at Twy BB and Twy FF. These rwys will be used for deps only when exercising the provisions of this authorization. ATCT is auth to conduct simul deps fm Rwy 04L/04R, Rwy 22L/22R, Rwy 09R with Rwy 09L or Rwy 10L, Rwy 09C with Rwy 09L or Rwy 10L, Rwy 10C with Rwy 09R or Rwy 09C, Rwy 27L with Rwy 27R or Rwy 28R, Rwy 27C with Rwy 27R or Rwy 28R, Rwy 28C with Rwy 27L or Rwy 27C with crs divergence beginning no later than 4 miles fm rwy end. BE ALERT: Twy S-1 outbnd or eastbound only, Twy S-2 inbound or westbound only, Twys P1, P2, P3, P5, and P6 northbound only, Twy E1, E2, and E4 southbound only, Twy E3 westbound only from 9C-27C. The northeast/southwest portion of Twy YY is not visible from center twr. Dupe alpha-numeric twy designators and trml gate designations involving the ltrs B, C, G, H, K, L and M. B747-8, B747-400, B777-200LR(F), B777-300ER, A350-900, A350-1000, A340-500, A340-600 and A330-900 cannot pass on Twy A and Twy B due to insufficient wingtip clnc. Acft are not permitted to stop on either Twy A or B bridges. All Part 91 and unscheduled Part 125, 133 and 135 charter oprs ctc FBO at 773-686-7000 regarding new security regulations prior to dep. A380-800 opr constraints exist on rwys, twys and ramps—Ctc arpt ops for info 773-686-2255. B747-8 ops not authorized on Rwys 09R-27L, 09L-27R and 10R-28L. Diversion air carriers without a presence at ORD should ctc arpt ops 773-686-2255 prior to diverting to the extent practical and provide company fit ops ctc info, acft type, persons on board, intl or domestic, any gnd handler agreements in place. Prim run up location ground run up enclosure; secondary run up locations avbl upon req, ctc city ops 773-686-2255. Twy YY btwn UAL Main Svc Cntr Hngr south ramp and Twy C2 clsd to wingspan more than 211 ft. Txl BB2 clsd to wingspan more than 118 ft. Acft with wingspan greater than 214 ft; rqr 48 hrs PPR call 773-686-2255. Periodic fire department trng at north sector of arpt. Fee req. Deicing fluid not avbl to tran acft. East and West gates are manned 24 hrs a day. Rwy 09R PAPI unusable byd 5 deg right of cntrln. Ldg fee. Flight Notification Service (ADCUS) avbl.

**AIRPORT MANAGER:** 773-686-8060

**WEATHER DATA SOURCES:** ASOS (773) 462-0118 LLWAS. TDWR.

**COMMUNICATIONS:** D-ATIS 135.4 (773) 601-8921 UNICOM 122.95 CTAF 122.9

Ⓡ CHICAGO APP CON 119.0 (360°-179°) 133.625 (180°-359°)

O HARE TWR - CENTER 119.625 (Rwy 10C-28C) 120.75 121.15 126.9 132.7

GND CON - TWR CENTER 121.9 (Inbnd) 121.75 (Outbnd)

O HARE TWR NORTH 128.15 (Rwy 09L-27R) GND CON - TWR NORTH 124.125

O HARE TWR SOUTH 128.05 (Rwy 10R-28L) 133.0 (Rwy 10R-28L) GND CON - TWR SOUTH 118.05

CLNC DEL 121.6 PRE-TAXI CLNC 121.6 GND METERING 121.675

Ⓡ CHICAGO DEP CON 125.0 (320°-149° East/North) 126.625 (150°-219° South) 126.625 (220°-319° West)

CPDLC (LOGON KUSA)

PDC

**AIRSPACE:** CLASS B See VFR Terminal Area Chart.

CONTINUED ON NEXT PAGE

CONTINUED FROM PRECEDING PAGE

RADIO AIDS TO NAVIGATION: NOTAM FILE GCO.

(L) DME 108.25 GCO Chan 19(Y) N41°59.65' W87°54.14' 194° 1.1 NM to fld. 646/OE.

DME unusable:

185°-194° byd 10 NM blo 4,000'

264°-288° byd 30 NM

351°-354° byd 20 NM blo 4,000'

ILS 110.1 I-FJU Rwy 04R. Class IE.

ILS/DME 111.9 I-OYG Chan 56 Rwy 09C. LOC unusable byd 15° right of course.

ILS/DME 111.75 I-SAJ Chan 54(Y) Rwy 09L. Class IIIE. DME unusable byd 20° left of course.

ILS/DME 110.5 I-JAV Chan 42 Rwy 09R. Class IB. Back up localizer; lat 41-59-02.04n long 087-53-14.93w; elev 645; dist-frm-rwy-stop 979. LOC unusable byd 30° left of course and byd 30° right of course.

ILS/DME 108.95 I-SXH Chan 26(Y) Rwy 10C. Class IIIE. LOC unusable byd 10° right of course.

ILS/DME 111.1 I-MED Chan 48 Rwy 10L. Class IIIE. DME also serves Rwy 27L.

ILS/DME 110.9 I-BYW Chan 46 Rwy 10R. Class IC.

ILS/DME 110.75 I-HZJ Chan 44(Y) Rwy 10X. Class IIIE.

ILS 110.1 I-LQQ Rwy 22L. Class IE.

ILS 111.3 I-RXZ Rwy 22R. Class IC.

ILS/DME 111.9 I-UYJ Chan 56 Rwy 27C. Class IIIE. LOC unusable byd 15° left of course.

ILS/DME 110.5 I-IAC Chan 42 Rwy 27L. Class IIIE.

ILS/DME 111.75 I-ABU Chan 54(Y) Rwy 27R. Class IIIE. DME unusable byd 10° right of course.

ILS/DME 108.95 I-VZE Chan 26(Y) Rwy 28C. Class IIIE.

ILS/DME 110.75 I-VQX Chan 44(Y) Rwy 28L. Class IIIE.

ILS/DME 111.1 I-TSL Chan 48 Rwy 28R. Class IIIE.

COMM/NAV/WEATHER REMARKS: Dual VHF communications required for Simultaneous Close Parallel ILS PRM approaches. Rwy 10C monitor 119.625, Rwy 10R monitor 128.05. CLASS B freq 133.5 for VFR acct req tfc advisories or to transition CLASS B South of O' Hare. CLASS B freq 120.55-306.925 for VFR acct requesting tfc advisories or to transition CLASS B North of O' Hare. CLASS B freq 128.2-353.875 for VFR acct requesting tfc advisories or to transition CLASS B Southeast of O' Hare. If unable to ctc Chicago App/Dep Control 133.1, call 312-686-0681 to obtain IFR CLNC.

HELIPAD H1: H200X100 (CONC) PERIMETER LGTS

HELIPORT REMARKS: H1 Apch/Dep paths are east and west.

LANSING MUNI (IGQ)(KIGQ) 21 S UTC-6(-5DT) N41°32.10' W87°31.77'

CHICAGO  
L-28H, A  
IAF

620 B NOTAM FILE IGQ

RWY 18-36: H4002X75 (ASPH-TRTD-PFC) S-24 MIRL

RWY 18: REIL. PAPI(P2L)—GA 3.0° TCH 40'.

RWY 36: REIL. PAPI(P2L)—GA 3.0° TCH 40'.

RWY 09-27: H3395X75 (ASPH-TRTD-PFC) S-12.5 MIRL

RWY 09: REIL. PAPI(P2L)—GA 3.0° TCH 40'. Bldg.

RWY 27: REIL. PAPI(P2L)—GA 3.0° TCH 40'.

SERVICE: S4 FUEL 100LL, JET A OX 1, 2, 3, 4 LGT MIRL Rwy 18-36 preset on low ints, to incr ints and ACTIVATE MRL Rwy 09-27, REIL Rwy 09, Rwy 18, Rwy 27 and Rwy 36 and twy lgts—CTAF.

NOISE: All pattern flying in noise sensitive area.

AIRPORT REMARKS: Attended 1300-2100Z. Birds and wildlife on and invof arpt. Fuel self service avbl 24 hrs with credit card. 146' twr 4325' from Rwy 27 665' rgt of exddd cntrln.

AIRPORT MANAGER: (708) 418-5888

WEATHER DATA SOURCES: AWOS-3 119.275 (708) 895-9526. Vsby unrelbl.

COMMUNICATIONS: CTAF/UNICOM 122.7

Ⓡ CHICAGO APP/DEP CON 128.2

CLEARANCE DELIVERY PHONE: For CD ctc Chicago Apch at 847-289-0926.

RADIO AIDS TO NAVIGATION: NOTAM FILE IKK.

CHICAGO HEIGHTS (L)(L)VORTACW 114.2 CGT Chan 89 N41°30.60'

W87°34.29' 050° 2.4 NM to fld. 634/2E.

TACAN AZIMUTH & DME unusable:

050°-070° byd 20 NM blo 4,000'

145°-150° byd 20 NM blo 4,000'

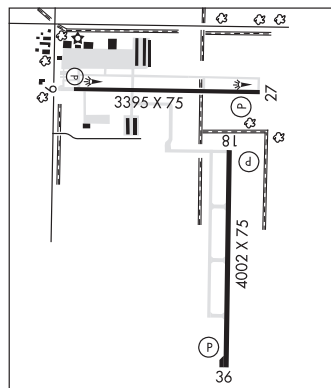
225°-280° byd 20 NM blo 4,000'

TACAN DME unusable:

110°-145° byd 20 NM blo 4,000'

150°-225° byd 20 NM blo 4,000'

LOC/DME 109.15 I-XJX Chan 28(Y) Rwy 36.



CHICAGO EXEC (See CHICAGO/PROSPECT HEIGHTS/WHEELING on page 48)