

**OWATONNA DEGNER RGNL** (OWA)(KOWA) 3 NW UTC-6(-5DT) N44°07.38' W93°15.53'

OMAHA  
H-21, L-12J  
IAP

1145 B TPA-1997(852) NOTAM FILE OWA

**RWY 12-30:** H5500X100 (CONC) S-30, D-60 HIRL 0.7% up SE

**RWY 12:** REIL. PAPI(P4L)—GA 3.0° TCH 40'.

**RWY 30:** MALSR. PAPI(P4L)—GA 3.0° TCH 50'. Sign.

**RWY 05-23:** H3000X75 (ASPH) MIRL

**RWY 05:** REIL. PAPI(P4L)—GA 3.0° TCH 24'.

**RWY 23:** REIL. PAPI(P4L)—GA 3.0° TCH 23'.

**SERVICE:** S4 **FUEL** 100LL, JET A **LGT** ACTIVATE MIRL Rwy 05-23, MALSR Rwy 30, REIL Rwy 05, Rwy 12, and Rwy 23, HIRL Rwy 12-30, PAPI Rwy 05, Rwy 12, Rwy 23 and Rwy 30—CTAF.

**AIRPORT REMARKS:** Attended May-Sep Mon-Fri 1400-0000Z†, May-Sep Sat-Sun 1600-2200Z†, Oct-Apr Mon-Fri 1400-2300Z†, Oct-Apr Sat-Sun 1700-2100Z†. Fuel: 100LL avbl 24 hrs with credit card. Jet A after hrs call 507-774-7141. Ultralights on and invof arpt.

**AIRPORT MANAGER:** 507-774-7141

**WEATHER DATA SOURCES:** AWOS-3 128.325 (507) 455-0642.

**COMMUNICATIONS:** CTAF/UNICOM 122.7

RCO 122.25 (PRINCETON RADIO)

Ⓡ **ROCHESTER APP/DEP CON** 119.8 (1100-0500Z†)

Ⓡ **MINNEAPOLIS CENTER APP/DEP CON** 132.35 (0500-1100Z†)

**CLEARANCE DELIVERY PHONE:** For CD ctc Rochester Apch at 507-424-8111.

**RADIO AIDS TO NAVIGATION:** NOTAM FILE PNM.

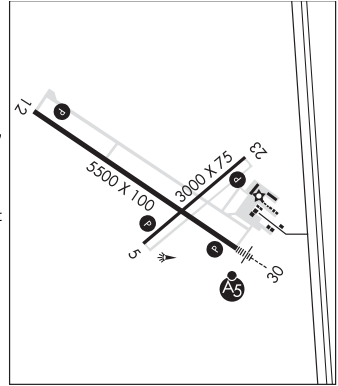
**HALFWAY (T) (T) VOR/DME** 111.2 FOW Chan 49 N44°12.27' W93°22.23' 133° 6.9 NM to fld. 1100/2E.

VOR/DME unmonitored.

VOR portion unusable:

230°-250°

**ILS/DME** 109.55 I-OWA Chan 32(Y) Rwy 30. Class IT. Unmonitored.



**PARK RAPIDS MUNI-KONSHOK FLD** (PKD)(KPKD) 2 S UTC-6(-5DT) N46°54.07' W95°04.39'

TWIN CITIES  
H-21, L-14H  
IAP

1445 B NOTAM FILE PKD

**RWY 13-31:** H5497X100 (ASPH) S-20, D-36 HIRL

**RWY 13:** REIL. PAPI(P4L)—GA 3.0° TCH 48'.

**RWY 31:** MALSR. PAPI(P4L)—GA 3.0° TCH 48'.

**RWY 18-36:** H3500X75 (ASPH) MIRL

**RWY 18:** REIL. PAPI(P4L)—GA 3.0° TCH 40'.

**RWY 36:** REIL. PAPI(P4R)—GA 3.0° TCH 40'.

**SERVICE:** S4 **FUEL** 100LL, JET A **LGT** HIRL Rwy 13-31 low intst SS-SR; to incr intst & ACTIVATE MIRL Rwy 18-36; REIL Rwy 13, 18 & 36; PAPI Rwy 13, 31, 18 & 36; MALSR Rwy 31—CTAF.

**AIRPORT REMARKS:** Attended Mon-Fri 1400-2300Z†. Call 218-237-8528 for svc after hrs. Fuel: 100LL avbl 24 hrs with credit card.

**AIRPORT MANAGER:** 218-237-2713

**WEATHER DATA SOURCES:** ASOS 110.6 PKD (218) 732-0920.

**COMMUNICATIONS:** CTAF/UNICOM 123.0

Ⓡ **MINNEAPOLIS CENTER APP/DEP CON** 134.75

**RADIO AIDS TO NAVIGATION:** NOTAM FILE PKD.

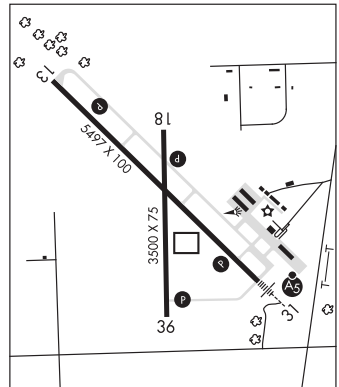
(L) **DME** 110.6 PKD Chan 43 N46°53.89'

W95°04.26' at fld. 1472/OE. **ASOS**

**SPIDA NDB (LOMW)** 269 PK N46°50.04'

W94°58.53' 311° 5.7 NM to fld. 1413/4E.

**ILS** 110.9 I-PKD Rwy 31. Class IC. LOM SPIDA NDB.



**PARK RAPIDS** N46°53.89' W95°04.26' NOTAM FILE PKD.

TWIN CITIES  
L-14H

(L) **DME** 110.6 PKD Chan 43 at Park Rapids Muni-Konshok Fld. 1472/OE.

**ASOS** 110.6 PKD N46°54.07' W95°04.39'. (218) 732-0920.