

WILLMAR MUNI—JOHN L RICE FLD (BDH)(KBDH) 2 W UTC-6(-5DT) N45°07.02' W95°07.76' TWIN CITIES
 1126 B TPA—2100(974) NOTAM FILE BDH H-21, L-121, 14H
 RWY 13-31: H5500X100 (ASP) HIRL IAP

RWY 13: MALSR. PAPI(P4R)—GA 3.0° TCH 50'. Trees.

RWY 31: REIL. PAPI(P4L)—GA 3.0° TCH 49'.

RWY 03-21: 2980X250 (TURF)

RWY 21: Crops.

SERVICE: S4 FUEL 100LL, JET A OX1, 2 LGT HIRL Rwy 13-31 preset to low ints SS-SR, to incr ints and ACTIVATE REIL Rwy 31; PAPI Rwy 13 and Rwy 31; HIRL Rwy 13-31—CTAF.

AIRPORT REMARKS: Attended 1400-2300Z±. Fuel: self svc avbl 24 hrs with credit card, after hrs call 320-979-2260. Rwy 03-21 not plwd winter months. Old arpt 1 mile east is clsd permanently. NSTD markings Rwy 03 and Rwy 21 mkd with yellow cones. Rwy 13-31 200' unusbl pavement byd rwy, both ends.

AIRPORT MANAGER: (320) 894-1872

WEATHER DATA SOURCES: AWOS-3 113.7 BDH (320) 235-8287.

COMMUNICATIONS: CTAF/UNICOM 122.8

RCO 122.15 (PRINCETON RADIO)

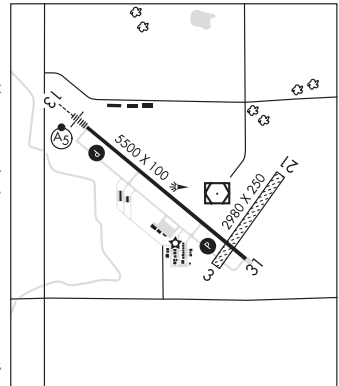
Ⓡ MINNEAPOLIS CENTER APP/DEP CON 125.5

CLEARANCE DELIVERY PHONE: For CD if una to ctc on FSS freq, ctc Minneapolis ARTCC at 651-463-5588.

RADIO AIDS TO NAVIGATION: NOTAM FILE BDH.

(T) (T) VOR/DME 113.7 BDH Chan 84 N45°07.06' W95°07.62' at fld. 1124/4E. AWOS-3

ILS 109.5 I-BDH Rwy 13. Class IC.



WILLMAR N45°07.06' W95°07.62' NOTAM FILE BDH. TWIN CITIES
 (T) (T) VOR/DME 113.7 BDH Chan 84 at Willmar Muni—John L Rice Fld. 1124/4E. L-121, 14H
 RCO 122.15 (PRINCETON RADIO)

WINDOM MUNI (MWM)(KMWM) 3 N UTC-6(-5DT) N43°54.80' W95°06.56' OMAHA
 1411 B NOTAM FILE MWM L-121
 RWY 17-35: H3598X75 (CONC) S-15, D-20 MIRL(NSTD) IAP

RWY 17: REIL. PAPI(P4L)—GA 3.0° TCH 25'.

RWY 35: REIL. PAPI(P4L)—GA 3.0° TCH 25'.

SERVICE: FUEL 100LL, JET A LGT Actvt REIL Rwy 17-35; PAPI Rwy 17 and 35; MIRL Rwy 17-35—CTAF. Rwy 17-35 nstd MIRL and thld lgt config for rwys served by IAPS.

AIRPORT REMARKS: Unattended. Birds on and invof arpt. Fuel avbl 24 hrs with credit card.

AIRPORT MANAGER: 507-830-0273

WEATHER DATA SOURCES: AWOS-3 118.525 (507) 831-1833.

COMMUNICATIONS: CTAF 122.9

Ⓡ MINNEAPOLIS CENTER APP/DEP CON 127.1

CLEARANCE DELIVERY PHONE: For CD ctc Minneapolis ARTCC at 651-463-5588.

RADIO AIDS TO NAVIGATION: NOTAM FILE RWF.

REDWOOD FALLS (H) (H) VOR/DME 113.3 RWF Chan 80

N44°28.04' W95°07.69' 172° 33.2 NM to fld. 1061/7E.

VOR/DME unusable:

016°-024° byd 37 NM blo 4,000'

