

**FORT MEADE(ODENTON)**

**TIPTON** (FME)(KFME) 1 SW UTC-5(-4DT) N39°05.12' W76°45.56'

WASHINGTON

150 B TPA—1000(850) NOTAM FILE FME

COPTER

**RWY 10-28:** H3000X75 (ASPH) MIRL 1.2% up E

L-29E, 34F, 36I, A

**RWY 10:** REIL. PAPI(P2L)—GA 4.0° TCH 51'. Trees. Rgt tfc.

IAP

**RWY 28:** REIL. PAPI(P2L)—GA 4.0° TCH 57'. Trees.

**SERVICE:** S2 **FUEL** 100LL, JET A+ **LGT** Actvt REIL Rwy 10 and 28; PAPI Rwy 10 and 28; MIRL Rwy 10-28—CTAF. Rwy 10-28 REIL; MIRL on photocell during dalgt hrs. Rwy 10 PAPI unusbl byd 8 degs left and right of crs. Rwy 28 PAPI unusbl byd 5 degs left of crs (trees), and 8 degs right of crs.

**AIRPORT REMARKS:** Attended 1330-2300Z±. Deer on rwys and twys. PAEW adj all twys and Rwy 10-28 indefly. Be alert for nmrs BWI tbjt arr/dep in the area. Fly tfc pattern south of the field to avoid BWI Class B Asp. Remain clear of BWI Class B Asp until clnc is obtained.

**AIRPORT MANAGER:** 410-222-6815

**WEATHER DATA SOURCES:** AWOS-3 123.925.

**COMMUNICATIONS:** CTAF/UNICOM 123.05

Ⓡ **POTOMAC APP/DEP CON** 119.7

**CLEARANCE DELIVERY PHONE:** For CD ctc Potomac Apch at 866-429-5882.

**RADIO AIDS TO NAVIGATION:** NOTAM FILE BWI.

**BALTIMORE (L) (L) VORTACW** 115.1 BAL Chan 98 N39°10.26' W76°39.68' 233° 6.9 NM to fld. 150/11W.

TACAN AZIMUTH & DME unusable:

133°-155° byd 20 NM blo 10,000'

300°-349° byd 35 NM

TACAN DME unusable:

133°-155° byd 36 NM

VOR unusable:

133°-155° byd 20 NM blo 10,000'

197°-217° byd 17 NM

282°-292°

TACAN AZIMUTH unusable:

029°-042° byd 30 NM

180°-190° byd 17 NM

**FREDERICK MUNI** (FDK)(KFDK) 0 E UTC-5(-4DT) N39°25.05' W77°22.46'

WASHINGTON

306 B TPA—See Remarks NOTAM FILE FDK MON Airport

H-10H, 12I, L-29E, 34F, A

**RWY 05-23:** H5219X100 (ASPH-GRVD) S-60 HIRL 0.5% up SW

IAP, AD

**RWY 05:** REIL. PAPI(P4L)—GA 3.0° TCH 43'. Trees. Rgt tfc.

**RWY 23:** ODALS. REIL. PAPI(P4L)—GA 3.0° TCH 54'. Trees.

**RWY 12-30:** H3599X75 (ASPH) MIRL 0.3% up NW

**RWY 12:** REIL. PAPI(P2L)—GA 3.0° TCH 45'. Trees. Rgt tfc.

**RWY 30:** REIL. PAPI(P2L)—GA 4.0° TCH 37'. Trees.

**SERVICE:** S4 **FUEL** 100LL, JET A **OX** 3, 4 **LGT** ACTVT ODALS Rwy 23; REIL Rwy 12, 23 and 30; PAPI Rwy 23; HIRL Rwy 05-23; MIRL Rwy 12-30—CTAF.

**AIRPORT REMARKS:** Attended 1200-0200Z±. Arpt unattended Christmas Day. Fuel self serve 100LL avbl H24 with credit card. Rwy 23 -15 ft depression 400 ft long; 246 ft L of cntrin; parallel to apch end. TPA—1109 (800) helicopters, 1309 (1000) single and lgt twins, 1809 (1500) large twins and jets.

**AIRPORT MANAGER:** 301-600-2201

**WEATHER DATA SOURCES:** AWOS-3 (301) 600-1457

**COMMUNICATIONS:** CTAF 132.4 ATIS 124.875 UNICOM 122.95

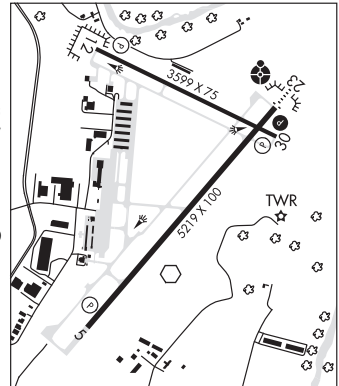
Ⓡ **POTOMAC APP/DEP CON** 126.1

**TOWER** 132.4 (1200-0200Z±) **GND CON** 121.975 **CLNC DEL** 121.975

126.9 (When twr clsd)

**CLEARANCE DELIVERY PHONE:** For CD when twr clsd ctc Potomac Apch at 866-709-4993.

**AIRSPACE:** CLASS D svc 1200-0200Z±; other times CLASS E.



CONTINUED ON NEXT PAGE

# MARYLAND

## CONTINUED FROM PRECEDING PAGE

**RADIO AIDS TO NAVIGATION:** NOTAM FILE DCA.

**WESTMINSTER (H) (H) VORTAC** 117.9 EMI Chan 126 N39°29.70' W76°58.71' 264° 19.0 NM to fld. 820/8W.

VOR portion unusable:

- 128°-161° byd 20 NM blo 6,500'
- 221°-231° blo 4,500'
- 221°-231° byd 13 NM blo 16,000'
- 295°-334° blo 5,500'

TACAN AZIMUTH unusable:

- 281°-055° byd 35 NM blo 3,000'

DME unusable:

- 281°-055° byd 35 NM blo 3,000'

**(T) VORW** 109.0 FDK N39°24.73' W77°22.51' at fld. 303/8W. NOTAM FILE FDK.

VOR unusable:

- 150°-160° byd 10 NM blo 3,000'
- 180°-190°

ILS 110.3 I-FDK Rwy 23. Class IT.

**COMM/NAV/WEATHER REMARKS:** Potomac Clnc Del 126.9 or 866-429-5882 (When twr clsd)

**FREEWAY** (See BOWIE on page 94)**FRIENDLY**

**POTOMAC AIRFIELD** (VKX)(KVKX) 0 NE UTC-5(-4DT) N38°44.92' W76°57.36'  
118 B NOTAM FILE DCA

**WASHINGTON**

**COPTER**

**L-29E, 34F, 36I, A**

**IAP**

**RWY 06-24:** H2665X40 (ASPH) MIRL 0.3% up NE

**RWY 06:** REIL. PAPI(P2L)—GA 5.0° TCH 19'. Thld dspcld 376'. Trees.

**RWY 24:** REIL. PAPI(P2L)—GA 5.5° TCH 20'. Thld dspcld 90'. Trees. Rgt tfc.

**SERVICE:** S4 **FUEL** 100LL **LGT** REIL Rwy 06 and 24; MIRL Rwy 06-24 opr S5-SR; To ACTVT otr times and ACTVT PAPI Rwy 06 and 24—CTAF. Rwy 06 PAPI unusable 3° right of course.

**NOISE:** Noise abatement procedures: avoid takeoff 0300-1200Z±.

**AIRPORT REMARKS:** Attended 1200-0300Z±. Arpt within Flight Restricted Zone. Expect 24 hr security from police, military and others on the ground and in the air. Unlimited vehicle access to acft movement areas. Rotating bcn located 1000' north of arpt. Rentals avbl 301-292-9700.

**AIRPORT MANAGER:** 301-248-5720

**COMMUNICATIONS:** CTAF/AUNICOM 122.8

**(R) POTOMAC APP/DEP CON** 124.7 125.65 (DC-FRZ)

**CLEARANCE DELIVERY PHONE:** For CD ctc Potomac Apch at 866-599-3874.

**RADIO AIDS TO NAVIGATION:** NOTAM FILE ADW.

**ANDREWS (L) (L) VORTACW** 113.1 ADW Chan 78 N38°48.43'  
W76°51.98' 240° 5.5 NM to fld. 263/10W.

VOR unusable:

- 035°-045° blo 2,500'
- 089°-182°
- 183°-227° blo 4,000'
- 230°-236° byd 20 NM
- 237°-270°
- 333°-048°

TACAN AZIMUTH unusable:

- 035°-045° blo 2,500'
- 220°-280°
- 295°-310°

DME unusable:

- 035°-045° blo 2,500'
- 220°-280°

**COMM/NAV/WEATHER REMARKS:** Automated UNICOM; 3 clicks adzy and wx, 4 clicks radio check. Visitors please tune 122.85 for parking instructions and gnd svcs.

