

**CONCORD MUNI** (CON)(KCON) P (ARNG) 2 E UTC-5(-4DT) N43°12.16' W71°30.14'  
342 B NOTAM FILE CON

**NEW YORK**  
H-11D, 12K, L-32H  
IAP, AD

**RWY 17-35:** H6005X100 (ASPH) S-43, D-60 HIRL

**RWY 17:** PAPI(P4L)—GA 3.0° TCH 50'. Thld dspclcd 641'. Tree.

**RWY 35:** MALSR. VASI(V4L)—GA 3.0° TCH 50'. Trees.

**RWY 12-30:** H3200X75 (ASPH) S-30 MIRL

**RWY 12:** PAPI(P2L)—GA 3.32° TCH 52'. Trees.

**RWY 30:** Trees.

**SERVICE:** S4 **FUEL** 100LL, **JET A** **LGT** ACTIVATE MALSR Rwy 35, HIRL Rwy 17-35, MIRL Rwy 12-30—CTAF. **MILITARY—FUEL** J8(Mil)—PPR (NC-100LL - Avbl H24 with credit card; A - Avbl 1230-2200Z±, OT fone C603-228-2267 and flw prompts.)

**AIRPORT REMARKS:** Attended 1200-2200Z±, exc Thanksgiving, Christmas, and New Years Day. Self-serve 100LL avbl 24 hrs with credit card. For Jet A after hrs call 1-603-228-2267 and follow prompts. Wildlife on and invof arpt. Heavy helicopter activity 1 NM east-southeast of arpt 800' and below. Rwy 35 designated calm wind rwy. Day and ngt VFR helicopter ops to and from New Hampshire State Police Hangar. Ops on National Guard twy and ramp prohibited without prior coordination due to security. Military twy and ramp PCN R/A/W/T. Ops off paved sfc's prohibited due to conservation management activities. Compass rose calibrated 2014.

**AIRPORT MANAGER:** 603-228-2267

**WEATHER DATA SOURCES:** ASOS 132.325 (603) 224-6558.

**COMMUNICATIONS:** CTAF/UNICOM 122.7

RCO 122.2 (BANGOR RADIO)

Ⓡ **BOSTON APP/DEP CON** 127.35

CLNC DEL 133.65

**CLEARANCE DELIVERY PHONE:** For CD ctc Boston Apch at 603-594-5552.

**AIRSPACE:** CLASS E.

**RADIO AIDS TO NAVIGATION:** NOTAM FILE CON.

(L) (L) **VORW/DME** 112.9 CON Chan 76 N43°13.19' W71°34.53' 123° 3.4 NM to fld. 715/15W.

VOR unusable:

022°-032° byd 20 NM blo 8,000'

190°-210° byd 12 NM blo 4,000'

318°-326° byd 30 NM blo 12,000'

DME unusable:

022°-032° byd 20 NM blo 8,000'

082°-110° byd 30 NM blo 5,000'

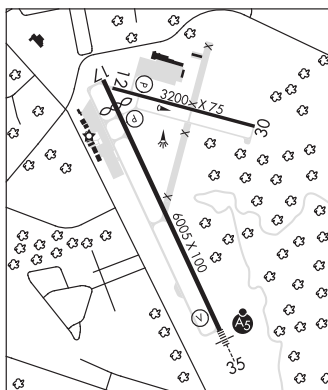
190°-210° byd 12 NM blo 4,000'

290°-300° byd 30 NM blo 7,000'

318°-326° byd 30 NM blo 12,000'

**EPSOM NDB (LOM)** 216 CO N43°07.13' W71°27.16' 353° 5.5 NM to fld. NDB unusable byd 20 NM.

**ILS** 108.7 I-CON Rwy 35. Class IA. LOM EPSOM NDB. NDB unusable byd 20 NM.



**DEAN MEML** (See HAVERHILL on page 150)

**DILLANT-HOPKINS** (See KEENE on page 151)

**EPSOM** N43°07.13' W71°27.15' NOTAM FILE CON.  
**NDB (MHW/LOM)** 216 CO 353° 5.5 NM to Concord Muni. 355/16W.  
NDB unusable:  
Byd 20 NM

**NEW YORK**  
L-32H, 33D