

KEATING N41°12.90' W78°08.57' NOTAM FILE AOO.
(H) (H) VORTAC 116.0 ETG Chan 107 241° 15.9 NM to Clearfield–Lawrence. 2250/10W.

DETROIT
H-10H, L-30I

KELLER BROTHERS (See LEBANON on page 288)

KRALLTOWN

BERMUDIAN VALLEY AIRPARK (Ø7N) 2 W UTC-5(-4DT) N40°01.01' W77°00.23'

DETROIT

470 NOTAM FILE IPT

RWY 16-34: 2200X100 (TURF)

RWY 16: Thld dspcd 370'. Trees.

RWY 34: Thld dspcd 100'. Trees.

SERVICE: S4

AIRPORT REMARKS: Attended irregularly. Ultralight activity on and invof arpt. Fld soft after prolonged rain. Rwy 16-34 rwy ends and edges mkd with w cones. Rwy 16 and Rwy 34 plcd thlds marked with 3 white cones each side of rwy and 2 white tires east side of rwy.

AIRPORT MANAGER: (717) 858-5063

COMMUNICATIONS: CTAF 122.9

CLEARANCE DELIVERY PHONE: For CD ctc Harrisburg Apch at 800-932-0712.

LANCASTER (LNS)(KLNS) 4 N UTC-5(-4DT) N40°07.34' W76°17.66'

NEW YORK

403 B Class II, ARFF Index A NOTAM FILE LNS

H-10H, 12I, L-29E, 34G, A
IAP, AD

RWY 08-26: H6933X150 (ASPH-GRVD) S-65, D-92, 2S-117,

2D-146 HIRL 0.3% up W

RWY 08: MALSR. PAPI(P4R)—GA 3.0° TCH 40'. Thld dspcd 357'. Road.

RWY 26: PAPI(P4L)—GA 3.0° TCH 47'. Thld dspcd 59'. Tree.

RWY 13-31: H4102X100 (ASPH) S-65, D-92, 2S-117, 2D-146 MIRL

RWY 13: PAPI(P2R)—GA 3.0° TCH 40'. Tree.

RWY 31: REIL.

LAND AND HOLD—SHORT OPERATIONS

LDG RWY	HOLD—SHORT POINT	AVBL LDG DIST
RWY 26	13-31	5190

RUNWAY DECLARED DISTANCE INFORMATION

RWY 08: TORA-6934 TODA-6934 ASDA-6475 LDA-6118
RWY 13: TORA-4102 TODA-4102 ASDA-4102 LDA-4102
RWY 26: TORA-6934 TODA-6934 ASDA-6177 LDA-6118
RWY 31: TORA-4102 TODA-4102 ASDA-4102 LDA-4102

SERVICE: S4 FUEL 100LL, JET A OX4 LGT When ATCT clsd
ACTVT MALSR Rwy 08; REIL Rwy 31; HIRL Rwy 08-26; MIRL Rwy 13-31 and twy lgts—CTAF. Rwy 13 VGSI and glidepath not coincident. Rwy lgts and MALSR unmonitored when twr clsd.

AIRPORT REMARKS: Attended Mon—Fri 1100-0200Z‡, Sat 1100-2300Z‡, Sun 1300-0200Z‡. PPR 24 hrs for air carrier ops with more than 30 passenger seats, call arpt manager 717-569-1221. Rwy/Twy conditions not monitored outside of attendance hours.

AIRPORT MANAGER: 717-569-1221

WEATHER DATA SOURCES: ASOS 125.675 (717) 569-8860.

COMMUNICATIONS: CTAF 120.9 ATIS 125.675 UNICOM 122.95

® HARRISBURG APP/DEP CON 126.45

TOWER 120.9 (1100-0400Z)‡ GND CON 121.8

CLEARANCE DELIVERY PHONE: For CD when ATCT clsd, ctc Harrisburg Apch at 800-932-0712.

AIRSPACE: CLASS D svc 1100-0400Z‡; other times CLASS E.

RADIO AIDS TO NAVIGATION: NOTAM FILE LNS.

(L) (L) VOR/DME 117.3 LRP Chan 120 N40°07.20' W76°17.48' at fld. 399/9W.

VOR unusable:

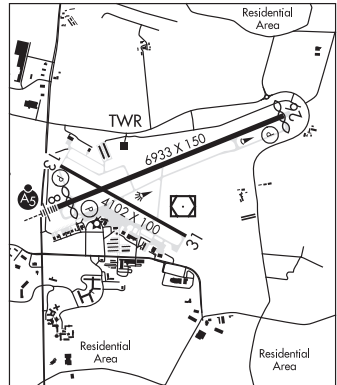
195°-273° byd 21 NM blo 9,000'

DME unusable:

180°-190°

320°-030° byd 31 NM blo 8,000'

ILS 108.7 I-LNS Rwy 08. Class IE. Unmonitored when ATCT clsd.



LATLE N40°10.69' W77°00.34' NOTAM FILE CYX.

NEW YORK

NDB (LOMW) 219 CX 083° 7.5 NM to Capital City. 505/11W.