

LATROBE

ARNOLD PALMER RGNL (LBE)(KLBE) 2 SW UTC-5(-4DT) N40°16.39' W79°24.62'

DETROIT

1199 B Class I, ARFF Index B NOTAM FILE LBE

RWY 06-24: H8222X150 (ASPH-GRVD) S-120, D-198, 2S-114, 2D-321 PCN 56 F/B/X/T HIRL

RWY 06: REIL. PAPI(P4L)—GA 3.0° TCH 48'. Pole. 1.4% down.

RWY 24: MALSR. PAPI(P4L)—GA 3.0° TCH 56'. Thld dsplcd 850'.

Trees. Rgt tfc.

RUNWAY DECLARED DISTANCE INFORMATION

RWY 06: TORA-8222 TODA-8222 ASDA-8222 LDA-8222

RWY 24: TORA-8222 TODA-8222 ASDA-8222 LDA-7372

SERVICE: S4 FUEL 100LL, JET A OX3 LGT When ATCT clsd, ACTVT MALSR Rwy 24; REIL Rwy 06; HIRL Rwy 06-24; Twy A, B, C and D—CTAF. Rwy 06 PAPI unusbl byd 8 degs right of cntrln. Rwy 24 PAPI unusbl byd 8 degs right of cntrln.

AIRPORT REMARKS: Attended continuously. Deer and birds on and invof arpt. Ldg fee. PPR 24 for unscheduled acft ops with more than 9 pax call arpt mgr 724-640-7234.

AIRPORT MANAGER: 724-539-8100

WEATHER DATA SOURCES: AWOS-3 118.375 (724) 539-0671.

COMMUNICATIONS: CTAF 125.0 ATIS 118.375 (724-539-0671)

Ⓡ **JOHNSTOWN APP/DEP CON** 121.2 (1200-0400Z±) or ctc 814-532-5960.

Ⓡ **CLEVELAND CENTER APP/DEP CON** 124.4 (0400-1200Z±) or ctc Cleveland ARTCC at 440-774-0234.

PALMER TOWER 125.0 (1115-0300Z±) **GND CON** 121.8

CLEARANCE DELIVERY PHONE: For CD ctc Johnstown Apch at 814-532-5960, when Apch clsd ctc Cleveland ARTCC at 440-774-0234.

AIRSPACE: CLASS D svc 1115-0300Z±; other times PPR; other times CLASS G.

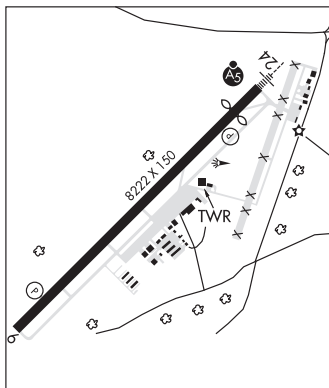
RADIO AIDS TO NAVIGATION: NOTAM FILE AOO.

INDIAN HEAD (L) (L) VORTAC 108.2 IHD Chan 19 N39°58.45' W79°21.50' 358° 18.1 NM to fld. 2820/6W.

VOR & TACAN AZIMUTH OTS indef

VOR voice OTS indef

ILS 110.9 I-LBE Rwy 24. Class IE. Unmonitored when ATCT closed.

**LAZY B RANCH** (See DOVER on page 272)

LEBANON

KELLER BROTHERS (Ø8N) 5 SE UTC-5(-4DT) N40°17.49' W76°19.72'

NEW YORK

550 B NOTAM FILE IPT

L-34G

RWY 07-25: 2692X120 (TURF) LIRL(NSTD)

IAP

RWY 07: Thld dsplcd 701'. Tree.

RWY 25: Thld dsplcd 793'. Tree.

SERVICE: FUEL 100LL LGT ACTVT WDI lgt, rotg bcn and LIRL Rwy 07-25-121.9. Rwy 07-25 nstd LIRL; rwy ends identified by 2 strobe lgts and nstd thld lgt fixtures. Rwy 07-25 thlds and dsplcd thlds marked with lgts.

AIRPORT REMARKS: Unattended. 100LL self serve.

AIRPORT MANAGER: (717) 222-1234

COMMUNICATIONS: CTAF 122.9

Ⓡ **HARRISBURG APP/DEP CON** 126.45 (080°-179°)

CLEARANCE DELIVERY PHONE: For CD ctc Harrisburg Apch at 800-932-0712.

RADIO AIDS TO NAVIGATION: NOTAM FILE LNS.

LANCASTER (L) (L) VOR/DME 117.3 LRP Chan 120 N40°07.20'

W76°17.48' 360° 10.4 NM to fld. 399/9W.

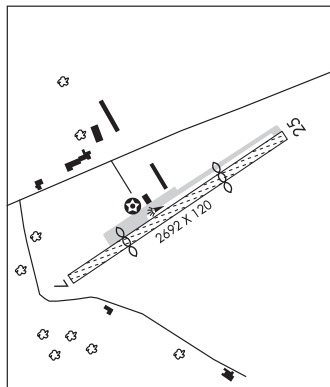
VOR unusable:

195°-273° byd 21 NM blo 9,000'

DME unusable:

180°-190°

320°-030° byd 31 NM blo 8,000'

**LEHIGH VALLEY INTL** (See ALLENTOWN on page 260)