

**WILKES-BARRE/SCRANTON INTL** (AVP)(KAVP) 5 SW UTC-5(-4DT) N41°20.31' W75°43.40'

**NEW YORK**  
H-101, 121, L-30K, 33A  
IAP, AD

962 B LRA ARFF Index—See Remarks NOTAM FILE AVP

**RWY 04-22:** H7502X150 (ASPH-GRVD) S-133, D-173, 2D-300

PCN 45 F/A/X/T HIRL 0.7% up SW

**RWY 04:** MALSR, PAPI(P4R)—GA 3.0° TCH 58'. RVR-TR

**RWY 22:** REIL, VASI(V4L)—GA 3.0° TCH 54'. RVR-TR Tower. Rgt tfc.

**RWY 10-28:** H4300X150 (ASPH-GRVD) S-58, D-80, 2S-101,

2D-125 MIRL 0.3% up E

**RWY 10:** REIL, PAPI(P2L)—GA 3.0° TCH 43'. Rgt tfc.

**RWY 28:** REIL. Trees. Rgt tfc.

**RUNWAY DECLARED DISTANCE INFORMATION**

**RWY 04:** TORA-7501 TODA-7501 ASDA-7501 LDA-7501

**RWY 10:** TORA-4300 TODA-4300 ASDA-4300 LDA-4300

**RWY 22:** TORA-7501 TODA-7501 ASDA-7501 LDA-7501

**RWY 28:** TORA-4300 TODA-4300 ASDA-4300 LDA-4300

**ARRRESTING GEAR/SYSTEM**

**RWY 04:** EMAS

**RWY 22:** EMAS

**SERVICE:** S3 FUEL 100LL, JET A OX2, 4

**AIRPORT REMARKS:** Attended continuously. Deer and birds on and in/ovf

arpt. Rwy 04-22 precipitous drop-off each rwy end. Class I, ARFF

Index B. Index C ARFF equipment avbl upon request call 570-602-2040. Unlgt'd twr 1130' 1.3 miles east AER 28,

unlgt'd twr 1463' 1.7 miles east AER 28, unlgt'd twr 1652' 2.4 miles east AER 28. Rwy 28 unlgt'd high terrain trees,

1155' MSL 0.91 miles east AER 28, 1463' MSL 1.49 miles east-southeast AER 28, 1667' MSL 2.25 miles east AER

28, 1920' MSL 2.84 miles east AER 28. For FBO svcs 0500-1000Z± local Mon-Fri and 0200-0500Z± local Sat-Sun

call (570) 457-4485. Ldg fee. Flight Notification Service (ADCUS) avbl.

**AIRPORT MANAGER:** 570-602-2000

**WEATHER DATA SOURCES:** ASOS 111.6 (570) 655-0748.

**COMMUNICATIONS:** UNICOM 122.95 ATIS 111.6

RCO 122.2 (WILLIAMSPORT RADIO)

Ⓡ **APP/DEP CON** 120.95 (280°-100°) 126.3 (101°-279°)

**TOWER** 120.1 **GND CON** 121.9

**AIRSPACE:** CLASS D.

TRSA svc ctc **APP CON** within 20 NM

**RADIO AIDS TO NAVIGATION:** NOTAM FILE AVP.

(L) **VORTACW** 111.6 LVZ Chan 53 N41°16.37' W75°41.37' 349° 4.2 NM to fld. 2118/10W.

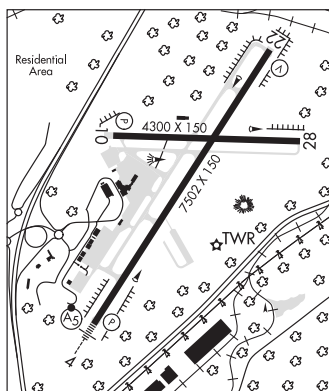
VOR unusable:

290°-305° byd 15 NM blo 6,000'

**ILS/DME** 109.9 I-AVP Chan 36 Rwy 04. Localizer offset angle 001° 46 min. LOC unusable byd 20° right of course.

DME unusable byd 20° right of course. DME also serves izk ILS.

**ILS/DME** 109.9 I-IZK Chan 36 Rwy 22. Class IT. DME unusable byd 20° right of course. LOC unusable byd 28° left of course.



**WILLIAM T PIPER MEML** (See LOCK HAVEN on page 289)

## WILLIAMSBURG

**COVE VALLEY** (6G6) 2 W UTC-5(-4DT) N40°27.27' W78°14.28'

**DETROIT**

1156 NOTAM FILE AOO

**RWY 04-22:** 2750X100 (TURF)

**RWY 04:** Thld dspld 285'. Road. Rgt tfc.

**RWY 22:** Thld dspld 286'. Brush.

**SERVICE:** S4

**AIRPORT REMARKS:** Attended Mon-Fri 1300-2200Z±, Sat-Sun irregularly. Arpt safety briefing rqrd before ldg 814-832-2694.

Deer and occasional geese on and in/ovf arpt. Turf soft during spring and after rains, no ops when rwy is soft or snow

covered. Rwy 04-22 marked with white boundary markers. Rwy 04 thld dspld marked with white barrels. Rwy 22 thld

dspld marked with white barrels.

**AIRPORT MANAGER:** 814-832-2694

**COMMUNICATIONS:** CTAF 122.9

**CLEARANCE DELIVERY PHONE:** For CD ctc Johnstown Apch at 814-532-5960, when Apch clsd ctc Cleveland ARTCC at 440-774-0234.