

LOGAN CO (6L4) 4 E UTC-5(-4DT) N37°51.34' W81°54.95'

CINCINNATI

1666 B NOTAM FILE EKN

L-26H

RWY 06-24: H3605X75 (ASPH) MIRL 0.3% up NE

RWY 06: REIL. PAPI(P2L)—GA 3.0° TCH 47'. Trees.

RWY 24: REIL. PAPI(P2L)—GA 3.0° TCH 42'. Trees.

SERVICE: S4 **FUEL** 100LL, JET A **LGT** ACTIVATE MIRL Rwy 06-24, REIL Rwy 06 and Rwy 24, PAPI Rws 06 and Rwy 24—CTAF.

AIRPORT REMARKS: Attended irregularly. 24 hr self-serv with credit card. Deer and wildlife on and invof arpt. Airframe repairs: For svc call 304-752-0094 days, 304-946-4415 nights. Rwy 06, 30 ft hill 800 ft from thld left. No vehicular access to fld without prior arrangement. Rwy 24 blasting 1-2 nautical miles from end of rwy. Irregularly sched. Airport access code—CTAF. Helipad clsd permanently. 4300 ft X 150 ft military practice rwy across Rwy 24 apch 1.2 miles NE oriented 11-29. Rwy 06 and Rwy 24 mkg faded. Wind indicator ws not vertical, wind indications unreliable.

AIRPORT MANAGER: 304-752-0975

WEATHER DATA SOURCES: AWOS-3PT 119.375 (304) 752-0814.

COMMUNICATIONS: CTAF 122.9

® **CHARLESTON APP/DEP CON** 119.2 (North)

INDIANAPOLIS CENTER APP/DEP CON 126.575 (South)

CLEARANCE DELIVERY PHONE: For CD ctc Charleston Apch at 304-344-5867 ext 281.

RADIO AIDS TO NAVIGATION: NOTAM FILE CRW.

CHARLESTON (H) (H) VOR/DME 117.4 HVQ Chan 121 N38°20.98' W81°46.19' 196° 30.4 NM to fld. 1099/3W.

VOR unusable:

185°-190°

240°-250°

DME unusable:

230°-240°

MARSHALL CO (See MOUNDSVILLE on page 399)

MARTINSBURG

EASTERN WV RGNL/SHEPHERD FLD (MRB)(KMRB) P (ANG) 4 S UTC-5(-4DT) N39°24.14'

WASHINGTON

W77°58.98'

H-10H, 121, L-29D, A

565 B TPA—See Remarks ARFF Index—See Remarks NOTAM FILE MRB

IAP, AD

RWY 08-26: H8815X150 (ASPH-CONC-GRVD) S-120, D-195,

2S-175, 2T-585, 2D-339, 2D/D1-568, 2D/2D2-830, C5-840

PCN 56 R/B/W/T HIRL

RWY 26: MALSR. VASI(V4L)—GA 3.0° TCH 53'. Thld dspcd 1000'.

Tree.

RUNWAY DECLARED DISTANCE INFORMATION

RWY 08: TORA-8815 TODA-8215 ASDA-8215 LDA-8215

RWY 26: TORA-8815 TODA-8815 ASDA-8815 LDA-7815

SERVICE: S4 **FUEL** 100LL, JET A, A++ **OX 3** **LGT** When ATCT clsd, ACTVT MALSR Rwy 26; HIRL Rwy 8-26—CTAF. **MILITARY—FUEL** A++ (Mil) (NC-100LL, A-OT fone C304-262-2507.) **FLUID** PRESAIR—Avbl 2200-0200Z† or 30 min PN and prior arg on hol. **OIL** O-156 and O-148 (Mil).

NOISE: ANG quiet hrs 0400-1200Z† Mon-Fri 2100-1300Z† Sat-Sun.

AIRPORT REMARKS: Attended May-Sep 1200-0000Z†, Oct-Apr

1200-0000Z†. Deer and birds on and invof arpt. For FBO services after hrs call 304-262-2507. 24-hour self-service AVGAS available. FAA ARFF Index D/NFPA Cat 8; Index E/Cat 10 equip avbl. Twy B clsd from T-hangar twy lane south. Twy D clsd past pvt hangar 1750 ft S of Twy E. TPA—rectangular 1600(1035), lgt and rotary wing acft, 2100(1535), for heavy acft, overhead 2100(1535)STD

white aerospace gnd and eqpt gearboxes. Rwy 26 first 590 ft conc, middle 7125 ft. asph, last 1100 ft conc. Ldg fee. Ldg fee for acft greater than 5000 lbs GWT (mil, fed, state, based acft exempt).

AIRPORT MANAGER: 304-263-2106

WEATHER DATA SOURCES: ASOS 119.925 (304) 264-0988. unmonitored when twr clsd.

COMMUNICATIONS: CTAF 124.3 UNICOM 122.95

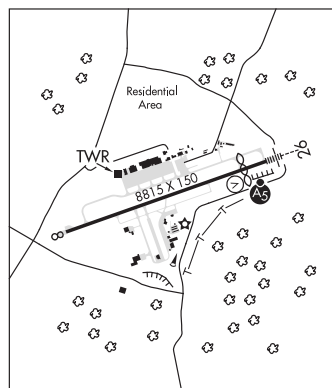
RCO 122.2 (LEESBURG RADIO)

® **POTOMAC APP/DEP CON** 126.825

MARTINSBURG TOWER 124.3 (1200-0400Z† Mon-Fri, 1300-2100Z† Sat-Sun, other times by NOTAM) **GND CON** 121.8

CLNC DEL 132.075

CLEARANCE DELIVERY PHONE: For CD when ATCT clsd, ctc Potomac Apch on 132.075 or if una 866-709-4773.



CONTINUED ON NEXT PAGE

CONTINUED FROM PRECEDING PAGE

AIRSPACE: CLASS D svc 1200–0400Z† Mon–Fri, 1300–2100Z† Sat–Sun; other times by NOTAM; other times CLASS E.

RADIO AIDS TO NAVIGATION: NOTAM FILE MRB.

MARTINSBURG (L) (L) VORTACW 112.1 MRB Chan 58 N39°23.13' W77°50.90' 286° 6.3 NM to fld. 600/7W.

VOR unusable:

020°–030° byd 15 NM blo 6,900'

127°–146° byd 15 NM

290°–310° byd 35 NM blo 5,400'

ILS 108.3 I–EXW Rwy 26. Class IE.

MASON CO (See POINT PLEASANT on page 402)

MERCER CO (See BLUEFIELD on page 389)

MID–OHIO VALLEY RGNL (See PARKERSBURG on page 400)

MILTON

ONA AIRPARK (12V) 4 W UTC–5(–4DT) N38°26.45' W82°12.05'

572 NOTAM FILE EKN

RWY 07–25: H3154X40 (ASPH) LIRL(NSTD)

RWY 07: Trees.

RWY 25: Trees.

SERVICE: S4 **FUEL** 100LL **LGT** Rwy 07–25 Nstd LIRL lights, nstd spacing and colors.

NOISE: Noise abatement procedures in effect; dep Rwy 25 fly 240° and dep Rwy 07 fly 090° to 1600' alt.

AIRPORT REMARKS: Attended continuously. Fuel 24 hr self–svc. Vehicles crossing rwy. Fence, poles, buildings in primary sfc west side. Rwy exit to ramp has depression. Race track adjacent to Rwy 07–25. Rwy 25 markings Nstd size and spacing.

AIRPORT MANAGER: (954) 328-7646

COMMUNICATIONS: CTAF/UNICOM 122.8

Ⓡ **HUNTINGTON APP/DEP CON** 119.75 (West)

Ⓡ **CHARLESTON APP/DEP CON** 124.1 (East)

CLEARANCE DELIVERY PHONE: For CD ctc hts ATCT at 304-453-2490.

RADIO AIDS TO NAVIGATION: NOTAM FILE CRW.

CHARLESTON (H) (H) VOR/DME 117.4 HVQ Chan 121 N38°20.98'

W81°46.19' 288° 21.0 NM to fld. 1099/3W.

VOR unusable:

185°–190°

240°–250°

DME unusable:

230°–240°

CINCINNATI

L–26H

IAP

