

KALISPELL CITY (S27) 1 S UTC-7(-6DT) N48°10.71' W114°18.22'

GREAT FALLS

2932 B NOTAM FILE GTF

L-13C

RWY 13-31: H3600X60 (ASPH) S-4 LIRL(NSTD)

RWY 13: Road.

RWY 31: Thld dsplcd 155'. Road.

SERVICE: S4 FUEL 100LL, JET A LGT ACTIVATE LIRL Rwy 13-31—CTAF.

AIRPORT REMARKS: Attended Mon-Fri 1500-0000Z. Parachute Jumping. Ultralights on and invof arpt. Bln act and paja on and invof arpt. Twr 400' AGL 3 miles East unlgtd. Rwy 31 lgtd thld relocated 155' for ngt ops, 3445' of Rwy 13-31 usable at ngt. Rwy 13-31 NSTD LIRL. Rwy 13 thld dthr not lgtd. Rwy 13 dthr 450 ft unlgtd.

AIRPORT MANAGER: (406) 755-2376

COMMUNICATIONS: CTAF/UNICOM 122.8

LAKESIDE RCO 122.5 (GREAT FALLS RADIO)

RADIO AIDS TO NAVIGATION: NOTAM FILE FCA.

(H) (H) **VOR/DME** 113.2 FCA Chan 79 N48°12.85' W114°10.55' 229° 5.6 NM to fld. 2984/18E.

VOR/DME unusable:

010°-070° byd 10 NM

160°-280° byd 30 NM blo 13,000'

350°-010° byd 10 NM blo 23,000'

VOR unusable:

070°-088° byd 20 NM blo 16,000'

088°-113° byd 22 NM blo 13,000'

088°-113° byd 35 NM blo 16,000'

DME unusable:

070°-113° byd 20 NM blo 16,000'

070°-113° byd 37 NM

KNOX RIDGE (See WINIFRED on page 127)

L M CLAYTON (See WOLF POINT on page 129)

LAKESIDE N48°00.68' W114°21.88'

GREAT FALLS

RCO 122.5 (GREAT FALLS RADIO)

L-13B

LAUREL MUNI (6S8) 2 N UTC-7(-6DT) N45°42.31' W108°45.65'

BILLINGS

3543 B NOTAM FILE GTF

H-1E, L-13D

RWY 04-22: H5199X75 (ASPH) S-12.5 MIRL 0.6% up SW

IAP

RWY 04: PAPI(P2L)—GA 3.0° TCH 34'.

RWY 22: PAPI(P2L)—GA 3.0° TCH 41'.

RWY 14-32: H3002X60 (ASPH) S-12.5 MIRL 2.0% up NW

RWY 14: PAPI(P2L)—GA 4.0° TCH 21'.

RWY 32: PAPI(P2L)—GA 3.0° TCH 21'.

RWY 09-27: 1100X60 (TURF) 2.2% up W

SERVICE: FUEL 100, JET A LGT ACTVT PAPI RWY 04 & 22 & 14 & 32; MIRL RWY 04-22 & RWY 14-32—CTAF.

AIRPORT REMARKS: Attended Mon-Fri 1500-0000Z, Sat-Sun intermittently. Parachute Jumping. Ultralights on and invof arpt. Numerous deer and antelope on and invof rwy. Intermittent snow removal, be alert during winter months. Rwy 09-27 not maintained during winter. Rwy 09-27 marker cones full rwy length.

AIRPORT MANAGER: (406) 698-6515

WEATHER DATA SOURCES: AWOS-2 135.05 (406) 628-9867.

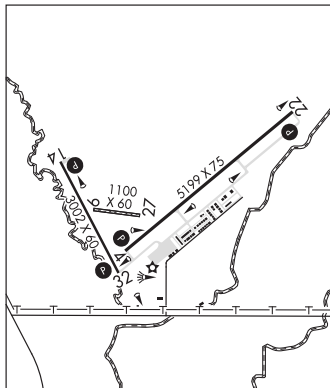
COMMUNICATIONS: CTAF/AUNICOM 123.05

® **BILLINGS APP/DEP CON** 119.2 120.5

CLEARANCE DELIVERY PHONE: For CD ctc Billings Apch at 406-255-2798

RADIO AIDS TO NAVIGATION: NOTAM FILE BIL.

BILLINGS (H) (H) VORTAC 114.5 BIL Chan 92 N45°48.51' W108°37.48' 209° 8.4 NM to fld. 3811/14E.



LAVINA (8ØS) 2 NW UTC-7(-6DT) N46°18.44' W108°57.29'

BILLINGS

3512 NOTAM FILE GTF

RWY 07-25: 3460X100 (TURF) 0.7% up W

AIRPORT REMARKS: Unattended. No snow removal. Rwy 07-25 very muddy when wet; few gopher holes. Rwy 07-25 marked with cones full rwy length. Cell twr 0.5 mi ESE of arpt.

AIRPORT MANAGER: 406-444-2506

COMMUNICATIONS: CTAF 122.9

CLEARANCE DELIVERY PHONE: For CD ctc Billings Apch at 406-255-2798