

DALLAS EXEC (RBD)(KRBD) 6 SW UTC-6(-5DT) N32°40.88' W96°52.13'
 661 B NOTAM FILE RBD
RWY 13-31: H7136X100 (CONC-GRVD) S-40, D-90, 2D-130 MIRL
RWY 13: REIL. PAPI(P4L)—GA 3.0° TCH 40'. Thld dsplcd 1085'.
RWY 31: REIL. PAPI(P4R)—GA 3.0° TCH 45'. Thld dsplcd 500'. Road.
RWY 17-35: H3800X150 (CONC) S-35, D-60, 2D-110 MIRL
RWY 17: REIL. PAPI(P4R)—GA 3.0° TCH 43'.
RWY 35: REIL.

DALLAS-FT WORTH
COPTER
 H-6H, L-17C, A
 IAP, AD

RUNWAY DECLARED DISTANCE INFORMATION

RWY 13: TORA-6766 TODA-7136 ASDA-6622 LDA-5537
RWY 31: TORA-6051 TODA-7136 ASDA-7101 LDA-6601
SERVICE: S4 FUEL 100LL, JET A OX 1, 2 LGT When ATCT clsd ACTVT
 PAPI Rwy 13 and 17—CTAF. MIRL Rwy 13-31; Rwy 17-35 preset
 low instg; to incr instg ACTVT—CTAF.

AIRPORT REMARKS: Attended 1200-0200Z. On call aft hrs. Fuel, 100LL
 avbl 24 hr with major credit card. Birds on and invof arpt.

AIRPORT MANAGER: 214-670-1296

WEATHER DATA SOURCES: ASOS (214) 330-5317 LAWRW.

COMMUNICATIONS: CTAF 127.25 ATIS 126.35 UNICOM 122.95

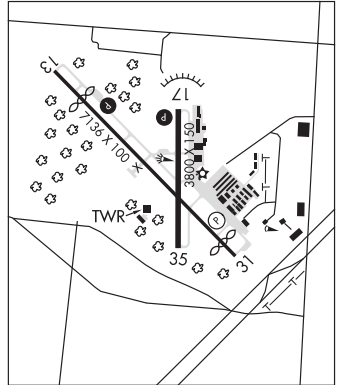
Ⓡ **REGIONAL APP/DEP CON** 125.2

EXECUTIVE TOWER 127.25 (1300-0300Z) **GND CON** 119.475 **CLNC**
 DEL 118.625

AIRSPACE: CLASS D svc 1300-0300Z; other times CLASS G.

RADIO AIDS TO NAVIGATION: NOTAM FILE FTW.

MAVERICK (H) (H) VORW/DME 113.1 TTT Chan 78 N32°52.15' W97°02.43' 136° 14.2 NM to fld. 536/6E.
 all acft arriving DFW are requested to turn DME off until departure due to traffic overload of Maverick DME
 DME unusable:
 180°-190° byd 10 NM
ILS/DME 110.75 I-RBD Chan 44(Y) Rwy 31. Class IE. Unmonitored when ATCT closed.



DALLAS LOVE FLD (DAL)(KDAL) 5 NW UTC-6(-5DT) N32°50.76' W96°51.05'
 487 B LRA Class I, ARFF Index C NOTAM FILE DAL
RWY 13R-31L: H8800X150 (CONC-GRVD) S-100, D-200, 2S-175,
 2D-350 PCN 68 R/B/W/T HIRL CL
RWY 13R: PAPI(P4R)—GA 3.0° TCH 52'. RVR-TM Thld dsplcd 489'.
 Rgt tfc.
RWY 31L: MALSR. TDZL. RVR-TM Bldg.

DALLAS-FT WORTH
COPTER
 H-6H, L-17C, A
 IAP, AD

RWY 13L-31R: H7752X150 (CONC-GRVD) S-100, D-200, 2S-175,
 2D-350 PCN 46 R/C/W/T HIRL CL
RWY 13L: MALSR. TDZL. PAPI(P4R)—GA 3.0° TCH 57'. RVR-TR Thld
 dsplcd 399'.
RWY 31R: MALSR. PAPI(P4L)—GA 3.0° TCH 55'. RVR-TR Pole. Rgt tfc.

RUNWAY DECLARED DISTANCE INFORMATION

RWY 13L: TORA-7752 TODA-7752 ASDA-7752 LDA-7352
RWY 13R: TORA-8800 TODA-8800 ASDA-8800 LDA-8310
RWY 31L: TORA-8800 TODA-8800 ASDA-8000 LDA-8000
RWY 31R: TORA-7752 TODA-7752 ASDA-6952 LDA-6952

SERVICE: S4 FUEL 100LL, JET A OX 1, 2, 3, 4

NOISE: Noise sensitive areas all quadrants; noise abatement procedures in
 effect jet and acft over 12,500 lbs use Rwy 13R-31L between
 0300-1200Z. For information call 214-670-5683.

AIRPORT REMARKS: Attended continuously. Birds on and invof arpt. Bird
 activity Trinity River bottom 3 miles SW side. PAEW on arpt. Pvt pilot
 certificate or better reqd to tkf or land. No student solo flts permitted. Twy K clsd thru tfc. Twy all clsd to design group IV,
 V, VI acft exc 1 hr PPR 214-288-3069. Flight Notification Service (ADCUS) available. User fee arpt. Ldg fee arpt.

AIRPORT MANAGER: 214-670-6073

WEATHER DATA SOURCES: ASOS (214) 353-1551 TDWR.

COMMUNICATIONS: D-ATIS 120.15 (214) 358-5355

DALLAS RCO 122.3 (FORT WORTH RADIO)

Ⓡ **RGNL APP CON** 124.3 (North) 125.2 (South)

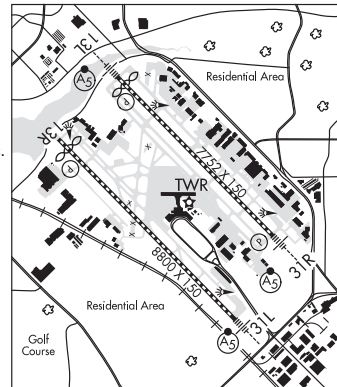
LOVE TOWER 123.7 **GND CON** 121.75 **CLNC DEL** 127.9

Ⓡ **RGNL DEP CON** 118.55 (East) 125.125 (South) 118.55 125.125 (Turbojets) 125.2 (South Props) 124.3 (North Props)

CPDLC (LOGON KUSA)

PDC

AIRSPACE: CLASS B See VFR Terminal Area Chart.



CONTINUED FROM PRECEDING PAGE

VOR TEST FACILITY (VOT) 113.3

RADIO AIDS TO NAVIGATION: NOTAM FILE FTW.

COWBOY (H) (H) VOR/DME 116.2 CVE Chan 109 N32°53.42' W96°54.24' 129° 3.8 NM to fld. 443/6E.

ILS/DME 111.5 I-DAL Chan 52 Rwy 13L. Class IIE. DME also serves Rwy 31R. DME unusable wi 1.3 NM frm thr; byd 30° left of course.

ILS/DME 111.1 I-DPX Chan 48 Rwy 13R. Class IE. DME also serves Rwy 31L.

ILS/DME 111.1 I-LVF Chan 48 Rwy 31L. Class IA. DME also serves Rwy 13R LOC unusable byd 18° right of course.

ILS/DME 111.5 I-OVV Chan 52 Rwy 31R. Class IIE. DME also serves Rwy 13L.

MCKINNEY NTL (TKI)(KTKI) 32 N UTC-6(-5DT) N33°10.62' W96°35.33'

589 B NOTAM FILE TKI

RWY 18-36: H7002X150 (CONC) S-75, D-150, 2D-450 HIRL

RWY 18: MALSR. PAPI(P4L)—GA 3.0° TCH 50'.

RWY 36: MALSR. PAPI(P4L)—GA 3.0° TCH 50'. Rgt tfc.

SERVICE: S4 **FUEL** 100LL, JET A1+ **OX 3** **LGT** When ATCT clsd actvt
MALSR Rwy 18; MALSR Rwy 36; PAPI Rwy 18 and 36; HIRL Rwy
18-36—CTAF.

AIRPORT REMARKS: Attended 1200-0400Z†. Bird activity invof arpt.

AIRPORT MANAGER: (972) 562-4053

WEATHER DATA SOURCES: ASOS (972) 548-8525

COMMUNICATIONS: CTAF 118.825 **UNICOM** 122.95

Ⓡ **REGIONAL APP/DEP CON** 124.3

TOWER 118.825 (1200-0400Z†) **GND CON** 121.875 **CLNC DEL** 121.35
(when twr clsd)

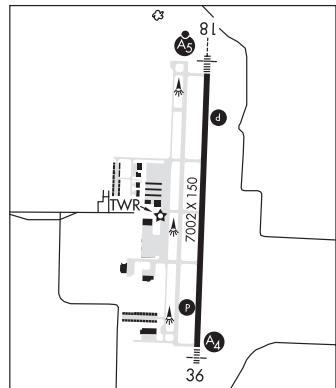
AIRSPACE: CLASS D svc 1200-0400Z†; other times CLASS G.

RADIO AIDS TO NAVIGATION: NOTAM FILE FTW.

COWBOY (H) (H) VOR/DME 116.2 CVE Chan 109 N32°53.42'
W96°54.24' 037° 23.4 NM to fld. 443/6E.

ILS/DME 109.35 I-EFE Chan 30(Y) Rwy 18. Unmonitored when
ATCT clsd.

**DALLAS—FT WORTH
COPTER**
H-6H, L-17C, A
IAP, AD



DALLAS SOUTH PORT (See PALMER on page 375)