

LANCASTER RGNL (LNC)(KLNC) 2 S UTC-6(-5DT) N32°34.66' W96°43.05'
 501 B NOTAM FILE LNC
RWY 13-31: H6500X100 (ASPH) S-20, D-60 MIRL 0.4% up NW
RWY 13: PAPI(P4L)—GA 3.0° TCH 45'.
RWY 31: REIL. PAPI(P4L)—GA 3.0° TCH 50'. Rgt tfc.
SERVICE: S4 FUEL 100LL, JET A+ LGT ACTIVATE MIRL Rwy
 13-31—CTAF.

**DALLAS—FT WORTH
 COPTER**
 H-6H, L-17C, A
 IAP

AIRPORT REMARKS: Attended 1300-0100Z. Arpt CLOSED Thanksgiving,
 Christmas Eve 1800Z thru Christmas. Birds, coyotes and wild hogs on
 and in/ovf arpt. Unlgtgd high tension pwr lines X 1 NM south of Rwy 31
 extended rcl. Full on auto-rotations, sliding skid l/dgs or tkfs by skid type
 helicopters on any paved sfc not authorized. North ramp helicopter prkg
 circles rotary wing use only, apch and dep not authorized. Altn clnc del
 if GCO inop: FTW TRACON: 972-615-2799 (Primary),
 972-615-2568 (Secondary).

AIRPORT MANAGER: 972-227-5721

WEATHER DATA SOURCES: AWOS-3 118.975 (972) 227-0471.

COMMUNICATIONS: CTAF/UNICOM 122.7

Ⓡ **REGIONAL APP/DEP CON** 118.1 125.025 125.2 125.27 125.9 135.975
 GCO Avbl on freq 121.725 (DALLAS/FORT WORTH TRACON)

CLEARANCE DELIVERY PHONE: For CD etc Regional Apch at 972-615-2799.

RADIO AIDS TO NAVIGATION: NOTAM FILE FTW.

COWBOY (H) (H) VORW/DME 116.2 CVE Chan 109 N32°53.42'
 W96°54.24' 147° 21.0 NM to fld. 443/6E.



LANE AIRPARK (See ROSENBERG on page 391)

LAREDO INTL (LRD)(KLRD) 3 NE UTC-6(-5DT) N27°32.65' W99°27.70'

BROWNSVILLE
 H-7B, L-20G
 IAP, AD

508 B AOE LRA Class I, ARFF Index B NOTAM FILE LRD
RWY 18R-36L: H8743X150 (CONC-GRVD) S-90, D-190, 2S-140,
 2D-415, 2D/2D2-820 HIRL
RWY 18R: MALSR. PAPI(P4L)—GA 3.0° TCH 50'.
RWY 36L: PAPI(P4L)—GA 3.0° TCH 50'. Thld dspcd 120'. Rgt tfc.
 0.4% up.
RWY 18L-36R: H8236X150 (CONC-GRVD) S-90, D-190, 2S-175,
 2D-360 HIRL
RWY 18L: PAPI(P4L)—GA 3.0° TCH 51'.
RWY 36R: Rgt tfc. 0.4% up.

RWY 14-32: H5927X150 (CONC) S-50, D-60, 2D-125 MIRL
 0.6% up NW

RWY 14: VASI(V4L)—GA 3.0° TCH 55'.

RWY 32: VASI(V4L)—GA 3.0° TCH 71'. Road. Rgt tfc.

RUNWAY DECLARED DISTANCE INFORMATION

RWY 14: TORA-5927 TODA-5927 ASDA-5927 LDA-5927
RWY 18L: TORA-8236 TODA-8236 ASDA-8236 LDA-8236
RWY 18R: TORA-8743 TODA-8743 ASDA-8743 LDA-8743
RWY 32: TORA-5927 TODA-5927 ASDA-5927 LDA-5927
RWY 36L: TORA-8743 TODA-8743 ASDA-8743 LDA-8623
RWY 36R: TORA-8236 TODA-8236 ASDA-8236 LDA-8236

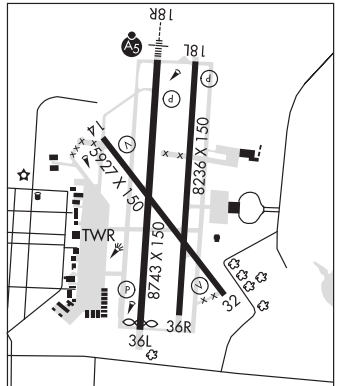
ARRESTING GEAR/SYSTEM

RWY 18R: EMAS

SERVICE: S7 FUEL 100LL, JET A OX2, 4 LGT When ATCT clsd ACTVT MALSR Rwy 18R—CTAF. MIRL Rwy 14-32; HIRL
 Rwys 18L-36R and Rwy 18R-36L preset med intst.

AIRPORT REMARKS: Attended continuously. Birds on and in/ovf arpt. JP4 fuel avbl. Rwy 14-32 rstrd to acct less than 60000 lbs
 DTW. Twy C clsd btn Rwy 18L-36R and Rwy 18R indefly. Federal inspection station is lctd on the West General
 Aviation/Cargo apron. Flight Notification Service (ADCUS) available. Lndg fee assessed for any "for hire" acct. Federal
 inspection station fee.

AIRPORT MANAGER: 956-795-2000



CONTINUED ON NEXT PAGE

CONTINUED FROM PRECEDING PAGE

WEATHER DATA SOURCES: AWOS-3PT (956) 712-8640 LAWRS SAWRS(WHEN ATCT CLSD).

COMMUNICATIONS: CTAF 120.1 ATIS 125.775 UNICOM 122.95

RCD 122.3 (SAN ANGELO RADIO)

Ⓡ HOUSTON CENTER APP/DEP CON 127.8

TOWER 120.1 (1200-0600Z) GND CON 121.8

CLEARANCE DELIVERY PHONE: For CD if una to ctc on FSS freq, ctc Houston ARTCC at 281-230-5622.

AIRSPACE: CLASS D svc 1200-0600Z, other times CLASS E.

RADIO AIDS TO NAVIGATION: NOTAM FILE LRD.

(H) (H) VORTACW 117.4 LRD Chan 121 N27°28.72' W99°25.06' 320° 4.6 NM to fld. 583/9E.

ILS/DME 111.9 I-LRD Chan 56 Rwy 18R. Class IE. Unmonitored when ATCT closed. Localizer backcourse unusable by 20° left of course. DME unusable by 20° left of localizer backcourse. Localizer backcourse unusable by 25° right of course.

COMM/NAV/WEATHER REMARKS: Emerg frequency 121.5 not avbl at twr.

LAUGHLIN AFB (DLF)(KDLF) AF 5 E UTC-6(-5DT) N29°21.56' W100°46.67'

SAN ANTONIO

1081 B NOTAM FILE DLF Not insp.

H-7B, L-19B

RWY 31C-31C: H8852X150 (PEM) PCN 35 F/A/W/T HIRL

DIAP, AD

RWY 13C: ALSF1. PAPI(P4L)—GA 3.0° TCH 38'.

RWY 31C: PAPI(P4L)—GA 3.0° TCH 55'.

RWY 13L-31R: H8315X150 (PEM) PCN 51 R/B/W/T HIRL

RWY 13L: PAPI(P4L)—GA 3.0° TCH 40'.

RWY 31R: PAPI(P4L)—GA 3.0° TCH 42'.

RWY 13R-31L: H6571X150 (ASPH) PCN 31 F/B/W/T MIRL

RWY 31L: Thld dspcd 328'.

ARRESTING GEAR/SYSTEM

RWY 13C BAK-15 CHAG (15' OVRN).

BAK-15 CHAG (155' OVRN). **RWY 31C**

RWY 13L BAK-15 CHAG (115' OVRN).

BAK-15 CHAG (155' OVRN). **RWY 31R**

SERVICE: S4 LGT Rwy 13C-31C PAPI opr dur opr hr, GS 3.0°. Rwy 13C-31C PAPI/ILS RPI's not coincidental. Rwy 31C apch lgt not avbl UFN. Three sets of missing twy end lgt - int of Twy G and D, Twy G and E, Twy G and F. 4 missing rwy edge lgt on Rwy 13C-31C opposite int with Twy J and Twy D. 3 groups twy lgts instl greater than 10' from twy edges: Twy B and Twy G both sides of int, Twy C and Twy G both sides of int. East side Twy G adj apn. Doubleblue twy entrance/exit lgt missing; Twy A and Rwy 13L/31R north side, Twy A and Rwy 13R/31L south side, Twy H and Rwy 13C/31C southwest side, Twy E and Rwy 13R-31L southwest side. **MILITARY— A-GEAR** BAK-15 on dep end Rwy 13C-31C and Rwy 13L-31R. Opposite end apch over raised barrier is proh. **JASU** 1(MD-3M) 1(MA-1A) 1(MC-1A) 1(MC-11) 1(A/M32A-86) **FUEL** A++, A++100 **FLUID** SP PRESAIR LHOX LOX OIL O-148 SOAP **TRAN ALERT** Opr dur aftd hr.

NOISE: Noise Abatement: AETC quiet hr policy in effect daily 0400-1200Z, no tkof, low apch or touch and go ldg.

MILITARY REMARKS: Opr weekdays Mon-Fri 1300-0100Z, Sun 2100-2359Z, Clsd to all acct exc emerg OT, Sat and hol; OT by NOTAM. **RSTD** All acct cross departure end of all rwys at or blo 1600' MSL for VMC departure. Rwy 13R-31L for lcl use only. T-1 and smaller acct only on Twys B, C, D, E and H. Rwy 31L thld dspcd 330', do not land prior to rwy thld, dspcd thld may be used for tkf on Rwy 31L and ldg rollout on Rwy 13R—do not use opposite end dspcd thld for tkf computations or tkf roll. Twy G1 for use by T6 acct only. Overhead apch not authorized for tran acct dur stu trng opr. Exp radar vectors for ILS, LOC or straight-in apch and full stop ldg dur stu trng. PPR, ctc Base OPS DSN 732-5308, C830-298-5308. All acct with wingspan larger than C-130 rstd. **CAUTION** Twenty-seven security lgt poles along edge of prk apron have no obst lgts. All departing acct cross 2 DME at or blo 3000' to ensure separation from civ corridor. Rwy Supervisor Units lctd 230' west of Rwy 13C abeam the 7000' remaining marker, 236' west of Rwy 31C abeam the 7000' remaining marker and 221' east of Rwy 31R abeam 5500' remaining marker. Twy J VFR daytime only, no edge lgts installed. Lgtd wind cone 249' west of Rwy 13C cntrln, south of Twy A. Lgtd wind cone 211' west of Rwy 13C cntrln, north of Twy E. Potential transit/divert UAS ops within lcl terminal area. **TFC PAT** Due to close proximity of rwys, once established on final apch, tran acct will remain aligned with Rwy 13C-31C to avoid T-6 tfc ldg Rwy 13R-31L at 2100' and tfc ldg Rwy 13L-31R at 2100'-2600'. **MISC** All acct dep VFR shall ctc CLNC DEL 335.8 for Class C Airspace climb out inst prior to taxi. Acft opr within the Rwy Supervisory Unit practice area are not Class C participants. Rwy Supervisory Unit practice area defined in AP/1. Airfield opns does not have ability to store comsec. Command post has ltd avbl storage. Ctc command post DSN 732-5167, c830-298-5167. Airfield opns does not have ability to store comsec. Command post has ltd avbl storage. Ctc command post DSN 732-5167, C830-298-5167. **RWY** First 300' Rwy 13C-31C is grvd conc, middle 8252' is grvd asph. First 1000' Rwy 13L-31R grvd conc, middle 6315' grvd asph. Rwy Cond Reading (RCR) unavbl. Rwy Cond Code (RwyCC) not rptd. No rwy sfc cond avbl when twr clsd.

AIRPORT MANAGER: 830-298-5308

CONTINUED ON NEXT PAGE