

HORSESHOE BEND (6M2) 1 NE UTC-6(-5DT) N36°13.28' W91°45.33'

KANSAS CITY

782 B NOTAM FILE JBR

L-16G

RWY 13-31: H4502X60 (ASPH) S-4 MIRL

IAP

RWY 13: Thld dsplcd 994'. Trees.

RWY 31: PAPI(P2L)—GA 3.0° TCH 40'. Tree.

SERVICE: FUEL 100LL LGT ACTVT PAPI Rwy 31; MIRL Rwy 13-31—CTAF.

AIRPORT REMARKS: Unattended. Self serve fuel H24 with credit card. Deer on and invof arpt. Rwy 13 tkof recommended due to rapidly rising trrn NW of arpt.

AIRPORT MANAGER: 304-268-3666

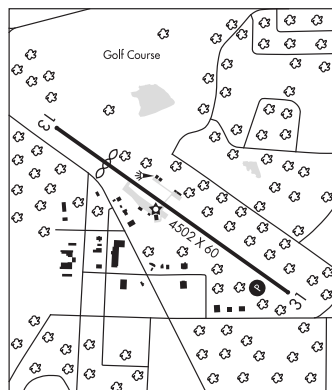
COMMUNICATIONS: CTAF/UNICOM 122.8

® MEMPHIS CENTER APP/DEP CON 120.075

CLEARANCE DELIVERY PHONE: For CD ctc Memphis ARTCC at 901-368-8453/8449.

RADIO AIDS TO NAVIGATION: NOTAM FILE ARG.

WALNUT RIDGE (H) (H) VORTAC 114.5 ARG Chan 92 N36°06.60' W90°57.22' 276° 39.5 NM to fld. 265/4E.



HOSSY N34°25.35' W93°11.38' NOTAM FILE HOT.

MEMPHIS

NDB (LOMw) 385 HO 053° 5.7 NM to Meml Fld. 471/1E.

L-17E

mntd by HOT & LIT ATCT

HOT SPRINGS

MEML FLD (HOT)(KHOT) 3 SW UTC-6(-5DT) N34°28.68' W93°05.77'

MEMPHIS

540 B Class II, ARFF Index A NOTAM FILE HOT

H-6I, L-17E

RWY 05-23: H6595X150 (ASPH-GRVD) S-75, D-125, 2S-158,

IAP

2D-210, 2D/2D2-400 PCN 54 F/D/X/U HIRL 0.6% up NE

RWY 05: MALSR. Rgt tfc.

RWY 23: PAPI(P4L)—GA 3.0° TCH 40'. Pole.

RWY 13-31: H4098X100 (ASPH) S-28, D-36, 2D-63

PCN 25 F/D/Y/T MIRL 0.4% up NW

RWY 13: REIL. Trees. Rgt tfc.

RWY 31: Pole.

RUNWAY DECLARED DISTANCE INFORMATION

RWY 05: TORA-6595 TODA-6595 ASDA-6595 LDA-6595

RWY 13: TORA-4100 TODA-4100 ASDA-4100 LDA-4100

RWY 23: TORA-6595 TODA-6595 ASDA-6195 LDA-6195

RWY 31: TORA-4100 TODA-4100 ASDA-4100 LDA-4100

SERVICE: S4 FUEL 100LL, JET A LGT ACTIVATE HIRL Rwy 05-23, MIRL Rwy 13-31, MALSR Rwy 05, PAPI Rwy 23, REIL Rwy 13—CTAF. Rwy 23 PAPI unusl byld 6° right of cntrln.

AIRPORT REMARKS: Attended 1100-0400Z†. For fuel after hrs call 501-617-0324 or 501-609-6523.

AIRPORT MANAGER: 501-321-6750

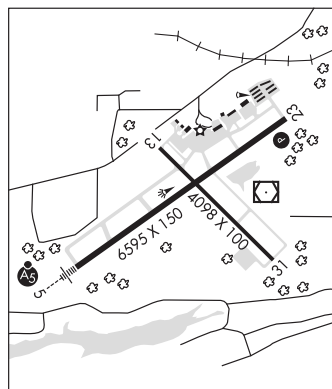
WEATHER DATA SOURCES: ASOS 119.925 (501) 624-7633.

COMMUNICATIONS: CTAF/UNICOM 123.0

RCO 122.1R 110.0T (JONESBORO RADIO)

® MEMPHIS CENTER APP/DEP CON 128.475

CLEARANCE DELIVERY PHONE: For CD ctc Memphis ARTCC at 901-368-8453.



CONTINUED ON NEXT PAGE

CONTINUED FROM PRECEDING PAGE

AIRSPACE: CLASS E svc 1200-0400Z†; other times CLASS G.

RADIO AIDS TO NAVIGATION: NOTAM FILE HOT.

HOT SPRINGS (L) (L) VOR/DME 110.0 HOT Chan 37 N34°28.72' W93°05.44' at fld. 529/4E.

VOR unusable:

056°-140° byd 20 NM blo 6,500'

141°-227° byd 20 NM blo 3,500'

141°-227° byd 26 NM blo 5,500'

228°-311° byd 20 NM blo 3,500'

312°-345° byd 15 NM blo 5,500'

312°-345° byd 32 NM blo 9,500'

346°-055° byd 20 NM blo 3,500'

DME unusable:

310°-035° byd 10 NM blo 11,000'

310°-035° byd 25 NM blo 12,000'

310°-035° byd 30 NM blo 17,000'

HOSSY NDB (LOMW) 385 HO N34°25.35' W93°11.38' 053° 5.7 NM to fld. 471/1E.

mnrtd by HOT & LIT ATCT

ILS/DME 111.5 I-HOT Chan 52 Rwy 05. Class IA. LOM HOSSY NDB. ILS and LOM unmonitored.

HOWARD CO (See NASHVILLE on page 68)

HUNTSVILLE MUNI (H34) 2 SW UTC-6(-5DT) N36°04.68' W93°45.30'

KANSAS CITY

1748 B NOTAM FILE JBR

L-16F

RWY 12-30: H3601X60 (ASPH) S-12.5 MIRL

IAP

RWY 03-21: 1250X60 (TURF)

RWY 03: Trees.

SERVICE: FUEL 100LL LGT ACTIVATE MIRL Rwy 12-30—CTAF.

AIRPORT REMARKS: Unattended. Self service fuel avbl 24 hrs with credit card.

Rwy 03 and Rwy 21 steep dropoffs at Rwy ends. Ultralight activity on and in/ov arpt.

AIRPORT MANAGER: 479-738-7287

COMMUNICATIONS: CTAF/UNICOM 122.8

Ⓡ RAZORBACK APP/DEP CON 126.6 (1130-0500Z†)

MEMPHIS CENTER APP/DEP CON 126.1 (0500-1130Z†)

CLEARANCE DELIVERY PHONE: For CD ctc Razorback Apch 479-649-2416, when Apch clsd ctc Memphis ARTCC at 901-368-8453/8449.

RADIO AIDS TO NAVIGATION: NOTAM FILE JBR.

RAZORBACK (H) (H) VORTACW 116.4 RZC Chan 111 N36°14.79' W94°07.28' 115° 20.5 NM to fld. 1332/4E.

VOR portion unusable:

025°-150° byd 22 NM blo 4,000'

150°-210° byd 22 NM blo 3,500'

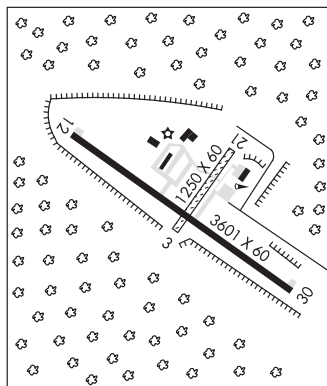
210°-220° byd 22 NM blo 3,000'

310°-025° byd 22 NM blo 3,000'

TACAN AZIMUTH unusable:

148°-160°

225°-240°



HUTFLY-FCY (See FORREST CITY on page 50)

J LYNN HELMS SEVIER CO (See DE QUEEN on page 44)

JACKSONVILLE N34°55.08' W92°09.46' NOTAM FILE JBR.

MEMPHIS

(T) TACAN 109.2 LRF Chan 29 at Little Rock AFB. 359/1E.

L-18F

No NOTAM MP: 1000-1430Z† Tue

DME unusable:

355°-056° byd 38 NM blo 3,000'