

**SOUTHWEST FLORIDA INTL** (RSW)(KRSW) 10 SE UTC-5(-4DT) N26°32.17' W81°45.31'

MIAMI

30 B LRA Class I, ARFF Index D NOTAM FILE RSW

H-8H, L-21D, 23B

**RWY 06-24:** H12000X150 (ASPH-GRVD) S-120, D-250, 2S-175,

IAP, AD

2D-538, 2D/2D2-1045 PCN 65 F/A/W/T HIRL CL

**RWY 06:** MALSR TDZL. PAPI(P4L)—GA 3.0° TCH 69'. RVR-T Rgt ttc.

**RWY 24:** REIL. PAPI(P4L)—GA 3.0° TCH 72'. RVR-R

**SERVICE:** S4 FUEL 100LL, JET A, A+ OX 1, 2, 3, 4 LGT ACTVT  
MALSR Rwy 06—CTAF. All other lgts opr consly.

**NOISE:** Rwy use program in effect; use distant noise abatement dep profile. Visual apch to Rwy 06 W of Fort Myers Beach maintain 3000 ft until crossing shoreline 12 NM SW of arpt. Rwy 24 preferred btn 0300-1100Z†. For noise abatement proc ctc amgr.

**AIRPORT REMARKS:** Attended 1200-0600Z†. Lgts on parallel road and parking lot NW of Rwy 06-24 can be mistaken for rwy and apch environment. CAUTION: GS ant 130 ft SW of Twy A cntrln btn Twy A1 & Twy A2. CAUTION: Open baggage bays and const within the terminal ramp area. Aircrews use minimum thrust setting in these areas, spcly durg single eng taxi. Cross-bleed starts only allowed aft reaching the tug release point. Operate transponders with altitude reporting mode and ADS-B (if equipped) enabled on all airport surfaces. Tfc procd drctly to gate unless drctd by ATC; advise ATC if gate is not avbl. Advise twr if gate is not avbl. Dep acft obtain apvl fm gnd ctl prior to pushback fm Gates B7, B9, C8, C9 and D10A. Pilots advise tug opr of obtained clnc fm gnd ctl prior to entering Twy G. Dep ctc gnd ctl prior to leaving the commuter ramp from Gates D9A and D9B. Gates B7 and B9 exp call spot # 7. Gates C8 and C9 exp call spot #4. Gate D10A exp call spot #2. Twy F6 exit sign lctd imt bfr Twy F5. All acft on ramp exp clockwise flow. Outbound traffic from Gates D2, D4, D6, D8 and D10 proceed to call spot 1; outbound traffic from Gates C2, C4, C6, D1, D3, D5 and D7 proceed to call spot 3; outbound traffic from Gates B2, B4, B6, B8, C1, C3, C5 and C7 proceed to call spot 5; outbound traffic from Gates B1, B3 and B5 proceed to call spot 9; all outbound traffic request taxi instructions. Gnd clnc rqr prior to entering Twy G. Twy A5 btn FBO ramp and Twy A clsd to acft wingspan more than 118 ft. Acr use ramp proc prescribed by arpt ops. No heli ops permitted on trml apron. U.S. CSTMS user fee arpt. Landing fees for charter, travel clubs and revenue producing acft. Flight Notification Service (ADCUS) avbl.

**AIRPORT MANAGER:** 239-590-4400

**WEATHER DATA SOURCES:** ASOS 124.65 (239) 561-0966. LLWAS.

**COMMUNICATIONS:** CTAF 128.75 UNICOM 122.95 D-ATIS 124.65

Ⓡ FORT MYERS APP/DEP CON 124.125 (121°-240°) 127.05 (301°-360°) (1100-0500Z†)

Ⓡ FORT MYERS APP CON 125.15 (Rwy 06) 126.8 (Rwy 24) 134.425 (241°-300°)

Ⓡ MIAMI CENTER APP/DEP CON 134.75 (0500-1100Z†)

LEE COUNTY RCO 122.1R (MIAMI RADIO)

FORT MYERS TOWER 128.75 (1100-0500Z†) GND CON 121.9 CLNC DEL 132.075

CPDLC (LOGON KUSA)

PDC

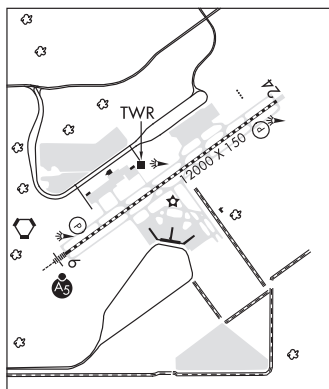
**CLEARANCE DELIVERY PHONE:** For CD ifun to ctc on Miami ctr freq, ctc Miami ARTCC at 305-716-1731 (0100-0700).

**AIRSPACE:** CLASS C svc ctc APP CON svc 1100-0500Z† ctc APP CON; other times CLASS E.

**RADIO AIDS TO NAVIGATION:** NOTAM FILE RSW.

LEE COUNTY (L) (L) VORTAC 111.8 RSW Chan 55 N26°31.79' W81°46.55' 073° 1.2 NM to fld. 25/2W.

ILS/DME 111.5 I-RSW Chan 52 Rwy 06. Class IA.



**AIRPORT MANAGER:** 239-590-4400

**WEATHER DATA SOURCES:** ASOS 124.65 (239) 561-0966. LLWAS.

**COMMUNICATIONS:** CTAF 128.75 UNICOM 122.95 D-ATIS 124.65

Ⓡ FORT MYERS APP/DEP CON 124.125 (121°-240°) 127.05 (301°-360°) (1100-0500Z†)

Ⓡ FORT MYERS APP CON 125.15 (Rwy 06) 126.8 (Rwy 24) 134.425 (241°-300°)

Ⓡ MIAMI CENTER APP/DEP CON 134.75 (0500-1100Z†)

LEE COUNTY RCO 122.1R (MIAMI RADIO)

FORT MYERS TOWER 128.75 (1100-0500Z†) GND CON 121.9 CLNC DEL 132.075

CPDLC (LOGON KUSA)

PDC

**CLEARANCE DELIVERY PHONE:** For CD ifun to ctc on Miami ctr freq, ctc Miami ARTCC at 305-716-1731 (0100-0700).

**AIRSPACE:** CLASS C svc ctc APP CON svc 1100-0500Z† ctc APP CON; other times CLASS E.

**RADIO AIDS TO NAVIGATION:** NOTAM FILE RSW.

LEE COUNTY (L) (L) VORTAC 111.8 RSW Chan 55 N26°31.79' W81°46.55' 073° 1.2 NM to fld. 25/2W.

ILS/DME 111.5 I-RSW Chan 52 Rwy 06. Class IA.

## FORT PIERCE

**FORT PIERCE SPB** (1FL) 1 NE UTC-5(-4DT) N27°26.36' W80°18.73'

MIAMI

00 NOTAM FILE Not insp.

**WATERWAY 16W-34W:** 3000X200 (WATER)

**AIRPORT MANAGER:** 772-467-3000

**COMMUNICATIONS:** CTAF 122.9