

ANDREWS

WESTERN CAROLINA RGNL (RHP)(KRHP) 2 W UTC-5(-4DT) N35°11.71' W83°51.78'

ATLANTA
H-9B, 12G, L-25B
IAF

1699 B NOTAM FILE RHP
RWY 08-26: H5500X100 (ASPH) S-25, D-45 MIRL 0.3% up NE
RWY 08: REIL. PAPI(P2L)—GA 3.5° TCH 24'. Thld dspcd 215'.
 Railroad. Rgt tfc.

RWY 26: PAPI(P2L)—GA 4.0° TCH 44'. Trees.
SERVICE: S4 FUEL 100LL, JET A, A1+ LGT ACTIVATE REIL Rwy 08—CTAF. PAPI Rwy 08 and Rwy 26 opr continuously. MIRL Rwy 08-26 on dusk-dawn, to incr ins—CTAF. Rwy 26 PAPI does not provide obstacle clnc byd 2.5 NM from thld, unusable byd 2.5 NM. Rwy 08 PAPI unusable byd 2° left and 8° right of centerline (due to terrain). Twy unlgtd.

AIRPORT REMARKS: Attended Mon-Sat 1400-2200Z‡, Sun 1700-2200Z‡. Unattended Thanksgiving, Christmas and New Year's Day. Fuel avbl 24 hrs with credit card. Low flying mil jet acct overly arpt. Rwy 08, 8' dropoff, 108' from thld both sides in rwy safety area. 4'-5' ditch 75' from rwy centerline on both sides. Cold temperature rstd arpt. Altitude correction required at or blo -8C.

AIRPORT MANAGER: 404-695-4448

WEATHER DATA SOURCES: AWOS-3 119.675 (828) 321-1049.

COMMUNICATIONS: CTAF/UNICOM 122.8

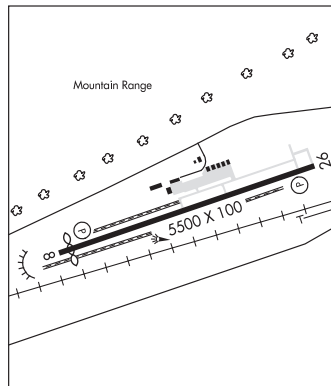
ATLANTA CENTER APP/DEP CON 134.8

CLEARANCE DELIVERY PHONE: For CD ctc Atlanta ARTCC at 770-210-7692.

RADIO AIDS TO NAVIGATION: NOTAM FILE MCN.

HARRIS (L) (L) VORTACW 109.8 HRS Chan 35 N34°56.58' W83°54.94' 010° 15.3 NM to fld. 3658/OE.

VOR portion unusable:
 044°-064° rdl



ANSON CO/JEFF CLOUD FLD (See WADESBORO on page 342)

ASHE CO (See JEFFERSON on page 306)

ASHEBORO RGNL (HBI)(KHBI) 6 SW UTC-5(-4DT) N35°39.27' W79°53.69'

CHARLOTTE
H-9B, 12H, L-25E, 36F
IAF

671 B NOTAM FILE HBI
RWY 03-21: H5501X100 (ASPH) S-30, D-60 MIRL
RWY 03: REIL. PAPI(P2L)—GA 3.5° TCH 50'. Trees.
RWY 21: REIL. PAPI(P2L)—GA 3.0° TCH 35'. Trees.

SERVICE: S4 FUEL 100LL, JET A1+ LGT ACTIVATE REIL Rwy 03 and 21, PAPI Rwy 03 and Rwy 21 after 0400Z‡, MIRL Rwy 03-21—CTAF.

AIRPORT REMARKS: Attended Oct-May 1300Z‡-dusk, Jun-Sep 1300Z‡-0100Z‡. 100LL 24 hr self svc avbl with credit card. Rwy 03 has 40' dropoff 400' from thld. Terrain rising south of the arpt.

AIRPORT MANAGER: 336-625-6120

WEATHER DATA SOURCES: AWOS-3 119.275 (336) 626-7933.

COMMUNICATIONS: CTAF/UNICOM 122.8

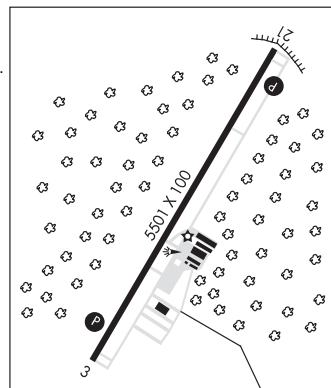
® **GREENSBORO APP/DEP CON** 126.6

CLEARANCE DELIVERY PHONE: For CD ctc Atlanta ARTCC at 770-210-7692.

RADIO AIDS TO NAVIGATION: NOTAM FILE GSO.

GREENSBORO (H) (H) VORTAC 116.2 GSO Chan 109 N36°02.74' W79°58.58' 173° 23.8 NM to fld. 908/3W.

TACAN AZIMUTH unusable:
 255°-290° byd 10 NM blo 6,000'



ASHEE N36°26.04' W81°19.31' NOTAM FILE GEV.
NDB (MHW) 410 JUH 276° 4.7 NM to Ashe Co. 3119/7W.

CINCINNATI
L-25D