

RALEIGH

TRIPLE W (5W5) 11 SW UTC-5(-4DT) N35°37.22' W78°42.02'

CHARLOTTE
L-35B, 36F

244 B NOTAM FILE RDU

RWY 16-34: H3004X40 (ASPH) LIRL(NSTD) 0.3% up N

RWY 16: Trees.

RWY 34: Trees.

SERVICE: LGT Dusk—0500Z†. ACTIVATE LIRL—CTAF. Rwy 16-34 NSTD LIRL. Rwy 16-34 lgts 15' from edge of rwy, Rwy 16 thld lgts 150' from thld, Rwy 34 thld lgts 460' from thld. Twy not lgtd.

AIRPORT REMARKS: Attended irregularly. Deer on and invof arpt. Numerous unlighted obstructions invof arpt. Night landings not recommended. Rwy 16-34 PAEW parallel twy. All acct over 6500 lbs. prohibited. Twr (500 AGL/826' MSL) approximately 1.75 NM NW of arpt. Be alert for rising terrain all quadrants. Rwy 16-34 has 4' dropoff 20' from pavement edge all sides. 4 ft dropoff twy edge both sides—south end. Be alert 1000' of twy North end Rwy 16 unusbl due to erosion under pavement. CAUTION: vehicles on or invof Rwy 16-34. Rwy 16-34 heavy vegetation in cracks, markings badly faded.

AIRPORT MANAGER: (919) 971-3718

COMMUNICATIONS: CTAF/UNICOM 122.7

CLEARANCE DELIVERY PHONE: For CD ctc Washington ARTCC at 703-771-3587.

RADIO AIDS TO NAVIGATION: NOTAM FILE RDU.

RALEIGH/DURHAM (H) VORTACW 117.2 RDU Chan 119 N35°52.35' W78°47.00' 174° 15.6 NM to fld. 429/9W.

RALEIGH EAST (See KNIGHTDALE on page 309)

RALEIGH EXEC JETPORT AT SANFORD—LEE CO (See SANFORD on page 333)

RALEIGH RGNL AT PERSON CO (See ROXBORO on page 331)

RALEIGH—DURHAM INTL (See RALEIGH/DURHAM on page 327)

RALEIGH/DURHAM

RALEIGH—DURHAM INTL (RDU)(KRDU) P (ARNG) 9 NW UTC-5(-4DT) N35°52.66'

CHARLOTTE
H-9C, 12H, L-36F
IAP, AD

W78°47.25'

435 B LRA Class I, ARFF Index D NOTAM FILE RDU

RWY 05L-23R: H10000X150 (CONC-WC) S-75, D-190, 2S-175,

2D-355, 2D/2D2-750 PCN 33 R/B/X/T HIRL CL

RWY 05L: MALSR. TDZL. PAPI(P4L)—GA 3.0° TCH 72'. RVR-TMR 0.6% up.

RWY 23R: ALSF2. TDZL. PAPI(P4L)—GA 3.0° TCH 69'. RVR-TMR Rgt tfc.

RWY 05R-23L: H7500X150 (ASPH-GRVD) S-75, D-176, 2S-175, 2D-335, 2D/2D2-750 PCN 89 F/A/X/T HIRL CL 0.4% up NE

RWY 05R: MALSR. PAPI(P4L)—GA 3.0° TCH 62'. RVR-TR Rgt tfc.

RWY 23L: MALSR. TDZL. PAPI(P4L)—GA 3.0° TCH 56'. RVR-TR

RWY 14-32: H3570X100 (ASPH) S-12 PCN 16 F/A/X/T MIRL

RWY 32: REIL. PAPI(P4L)—GA 3.5° TCH 47'. Trees.

RUNWAY DECLARED DISTANCE INFORMATION

RWY 05L:TORA-10000 TODA-10000 ASDA-10000 LDA-10000

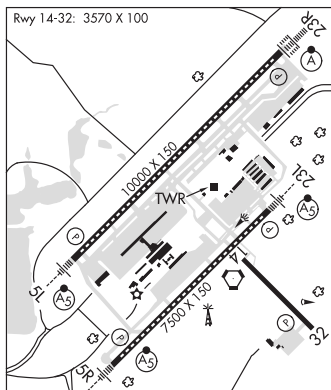
RWY 05R:TORA-7500 TODA-7500 ASDA-7500 LDA-7500

RWY 23L:TORA-7500 TODA-7500 ASDA-7500 LDA-7500

RWY 23R:TORA-10000 TODA-10000 ASDA-10000 LDA-10000

SERVICE: S4 FUEL 100LL, JET A OX 1, 2 LGT Visibility of bcn shielded to the North. **MILITARY—** FUEL A, A+ (C919-840-2200.) (NC-100LL)

AIRPORT REMARKS: Attended continuously. Arpt CLOSED to airships. Rwy 05L-23R SW 3000' ungrvd and NE 3000' ungrvd. Twy F1 is clsd until further notice. Crane 75' AGL 0.76 NM from AER 05R. PPR for all mil acct, fixed wing-rotary wing and unscheduled charter flts with 30 or more pax. 24 hrs PN rqr for mil practice apchs. Ctc arpt ops 919-840-7510 or RDU app C919-380-3125. 24 hr PPR for all fixed wing and rotary wing mil acct going to ARNG ramp. POC DSN 582-9000, extrn 16200, C919-804-5300, extrn 16200. No jet engine maint runs btn 0500-1100Z†. National Guard 24 hr PPR for jet acct and trans mil acct 919-840-7510. No apvl rqr for pushback at terminal gates unless acct rqr's use of twy. Ctc ATC prior to pushing onto twy. Twy E behind South Cargo 4 and Twy J behind corporate hangars not visible from twr. All tdg V acct taxiing on Twy A are rstd to taxi speed of 15 mph. Apn Txl F btn Twy T1 and Twy T7 clsd to acct with wingspan more than 171'. Twy F2 and F5 clsd until further notice. Twy D clsd to acct with wingspan more than 171' when Twy G and H are occupied. Twy C btn Twy G and Twy F clsd to acct wingspan more than 118'. Twy B btn Twy C and Twy B5 clsd. Flight Notification Service (ADCUS) avbl.



CONTINUED ON NEXT PAGE

CONTINUED FROM PRECEDING PAGE

AIRPORT MANAGER: (919) 840-7701

WEATHER DATA SOURCES: ASOS (919) 840-0816 LLWAS. TDWR.

COMMUNICATIONS: D-ATIS 123.8 (919) 840-0486 UNICOM 122.95

RCO 122.2 (RALEIGH RADIO)

Ⓡ **APP CON** 124.95 (055°-229°) 127.675 (230°-054°)

TOWER 119.3 (West) (Rwy 05L-23R) 127.45 (East) (Rwy 05R-23L and Rwy 14-32)

GND CON 121.7 (West) (Rwy 05L-23R) 121.9 (East) (Rwy 05R-23L and Rwy 14-32) **CLNC DEL** 120.1

Ⓡ **DEP CON** 125.3 (055°-229°) 132.35 (230°-054°)

CPDLC (LOGON KUSA)

PDC

AIRSPACE: CLASS C svc ctc **APP CON**.

RADIO AIDS TO NAVIGATION: NOTAM FILE RDU.

RALEIGH/DURHAM (H) (H) VORTACW 117.2 RDU Chan 119 N35°52.35' W78°47.00' at fld. 429/9W.

LEEYV NDB (HW/LOW) 350 LE N35°55.63' W78°43.31' 234° 4.4 NM to fld. 442/7W.

ILS/DME 109.1 I-GKK Chan 28 Rwy 05L. Class IA.

ILS/DME 109.5 I-RDU Chan 32 Rwy 05R. Class IIE.

ILS/DME 108.5 I-LEI Chan 22 Rwy 23L. Class IA. LOM LEEYV NDB. LOC unusable from 1.0 NM to thld and for coupled approaches from 2.0 NM to thld. DME unusable byd 28° left of course.

ILS/DME 111.7 I-DMP Chan 54 Rwy 23R. Class OF IIIIE. LOC unusable byd 20° r of course.

RALEIGH/DURHAM N35°52.35' W78°47.00' NOTAM FILE RDU.

(H) (H) **VORTACW** 117.2 RDU Chan 119 at Raleigh-Durham Intl. 429/9W.

WASHINGTON

L-35C, 36G

REENO N36°04.26' W80°10.01' NOTAM FILE INT.

NDB (LOWW) 317 IN 332° 4.6 NM to Smith Reynolds. 862/7W.

CINCINNATI

L-25D, 36F

REIDSVILLE

ROCKINGHAM CO NC SHILOH (SIF)(KSIF) 8 NW UTC-5(-4DT) N36°26.23' W79°51.06'

694 B NOTAM FILE SIF

RWY 13-31: H5200X100 (ASPH) S-32, D-43 HIRL 0.5% up NW

RWY 13: REIL. PAPI(P4L)—GA 3.7° TCH 45'. Thld dspcd 500'. Trees.

RWY 31: REIL. PAPI(P4L)—GA 3.7° TCH 38'. Trees.

SERVICE: S4 **FUEL** 100LL, JET A1+ **LGT** ACTVT REIL Rwy 13 and 31;

PAPI Rwy 13 and 31; HIRL 13-31—CTAF.

AIRPORT REMARKS: Attended 1300-2200Z. Deer on and invof arpt.

100LL fuel 24 hr credit card svc avbl.

AIRPORT MANAGER: 336-573-3115

WEATHER DATA SOURCES: AWOS-3 119.775 (336) 573-3677.

COMMUNICATIONS: CTAF/UNICOM 122.8

Ⓡ **GREENSBORO APP/DEP CON** 124.35

CLEARANCE DELIVERY PHONE: For CD ctc gso at 336-333-5119.

RADIO AIDS TO NAVIGATION: NOTAM FILE GSO.

GREENSBORO (H) (H) VORTAC 116.2 GSO Chan 109 N36°02.74'

W79°58.58' 018° 24.2 NM to fld. 908/3W.

TACAN AZIMUTH unusable:

255°-290° byd 10 NM blo 6,000'

SLAMMER NDB (MHW) 423 SIF N36°22.90'

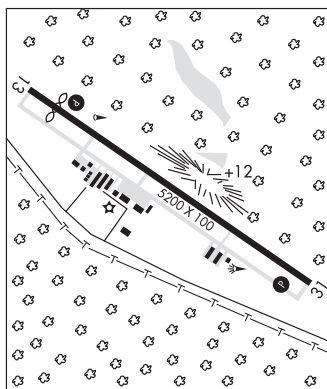
W79°45.77' 315° 5.4 NM to fld. 862/7W. NOTAM FILE SIF.

SDF 108.3 I-OQA Rwy 31. SDF OTS indef.

CINCINNATI

H-9B, 12H, L-26J, 36F

IAP



WARF (6A5) 3 SW UTC-5(-4DT) N36°19.44' W79°42.56'

820 NOTAM FILE RDU

RWY 17-35: H2550X150 (CONC-TURF) S-8 1.3% up N

RWY 17: Tree.

RWY 35: Trees.

AIRPORT REMARKS: Unattended. Deer on and invof arpt. Rwy yellow cones not placed in accordance with reported rwy length or width. Rwy 17-35 has 60' - 85' trees 100' from rwy centerline both sides. Rwy 17-35 concrete portion 900' x 18' at north end. Rwy 35 has uphill grade. Rwy 35 has more than 50' dropoff/downslope 35' from thld both sides.

AIRPORT MANAGER: (336) 349-2195

COMMUNICATIONS: CTAF 122.9

CLEARANCE DELIVERY PHONE: For CD ctc Greensboro Apch at 336-333-5119.

RICHMOND CO (See ROCKINGHAM on page 329)