

MEMPHIS INTL (MEM)(KMEM) P (ANG) 3 S UTC-6(-5DT) N35°02.54' W89°58.60'

MEMPHIS

341 B LRA ARFF Index—See Remarks NOTAM FILE MEM

H-6J, L-18G

RWY 18C-36C: H11120X150 (CONC-GRVD) S-125, D-210, 2S-175, 2D-458, 2D/2D2-873 PCN 82 R/C/W/T HIRL CL

RWY 18C: MALSR. TDZL. RVR-TMR Pole. 0.7% up.

RWY 36C: ALSF2. TDZL. PAPI(P4L)—GA 3.0° TCH 71'. RVR-TMR Tree. Rgt tfc. 0.6% down.

RWY 18R-36L: H9320X150 (CONC-GRVD) S-125, D-210, 2S-175, 2D-458, 2D/2D2-873 PCN 82 R/C/W/T HIRL CL

RWY 18R: MALSR. TDZL. RVR-TMR Rgt tfc.

RWY 36L: ALSF2. TDZL. PAPI(P4L)—GA 3.0° TCH 73'. RVR-TMR Tree. 0.5% down.

RWY 18L-36R: H9000X150 (CONC-GRVD) S-125, D-210, 2S-175, 2D-458, 2D/2D2-873 PCN 82 R/C/W/T HIRL CL

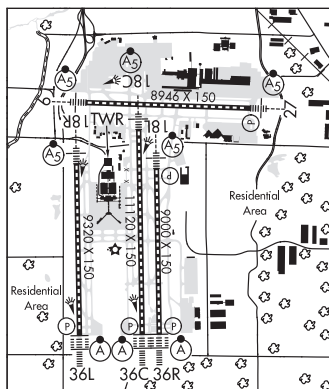
RWY 18L: MALSR. TDZL. PAPI(P4L)—GA 3.0° TCH 73'. RVR-TMR 0.8% up.

RWY 36R: ALSF2. TDZL. PAPI(P4R)—GA 3.0° TCH 69'. RVR-TMR Trees. 0.5% down.

RWY 09-27: H8946X150 (CONC-GRVD) S-125, D-178, 2S-175, 2D-602, 2D/2D2-870 PCN 92 R/B/W/T HIRL CL

RWY 09: MALSR. RVR-TR Pole. 0.3% up.

RWY 27: MALSR. PAPI(P4L)—GA 3.0° TCH 69'. RVR-TR Pole. 0.6% down.



LAND AND HOLD—SHORT OPERATIONS

LDG RWY	HOLD—SHORT POINT	AVBL LDG DIST
RWY 27	TWY N	8450

RUNWAY DECLARED DISTANCE INFORMATION

RWY 09:	TORA-8946	TODA-8946	ASDA-8946	LDA-8946
RWY 18C:	TORA-11120	TODA-11120	ASDA-11120	LDA-11120
RWY 18L:	TORA-9000	TODA-9000	ASDA-9000	LDA-9000
RWY 18R:	TORA-9320	TODA-9320	ASDA-9320	LDA-9320
RWY 27:	TORA-8946	TODA-8946	ASDA-8946	LDA-8946
RWY 36C:	TORA-11120	TODA-11120	ASDA-10715	LDA-10715
RWY 36L:	TORA-9320	TODA-9320	ASDA-9320	LDA-9320
RWY 36R:	TORA-9000	TODA-9000	ASDA-9000	LDA-9000

ARRESTING GEAR/SYSTEM

RWY 18R: EMAS

SERVICE: S4 FUEL 100LL, JET A, A+, A++ OX 1, 2 LGT Rwy 36R ALSF-2 also opr as SSALR. Rwy 36R ALSF2 unmonitored. **MILITARY—A-GEAR** Rwy 18R EMAS 316 x 178. JASU 1(MD-3) 5(MD-3M) 1(MA-1A) 2(MC-2A) 2(A-7) FUEL A, A+ (C901-345-2992) A++ (Mil) (ANG PPR DSN 726-7131, C901-291-7131. Copter refuel is 2 nozzle.) (NC-100LL) FLUID SP PRESAIR LOX OIL O-156(Mil)

NOISE: Noise abatement procedures in effect. NOTE: See Special Notices—Memphis Intl Airport (MEM) Noise Abatement Procedures.

AIRPORT REMARKS: Attended continuously. Class I, ARFF Index C. Index D ARFF eqpt avbl 24 hrs per day, 7 days per wk.

ASDE-X in use. Operate transponders with altitude reporting mode and ADS-B (if equipped) enabled on all airport surfaces. Conduct gnd ops with transponders on. Successive and/or simultaneous dep avpd on Rwy 36L-18R and Rwy 36C-18C or Rwy 36L-18R and Rwy 36R-18L with course divergence no later than 2.27 NM from rwy end. Extv const on arpt. Hold short instruction read back rqr. Single belly twin tandem ldg gear max wt 621,000 lbs. PPR rqr for taxi clnc on Twy N north of Twy V, Twy S north Twy V and Twy C north of Twy V—Fedex Ramp ATCT 131.5. Heli ops to/from trml bldg na. Twy P1, Twy P2, Twy N north of Twy V, Twy C north of Twy V and Twy S north of Twy V designated non-movement areas. Large and heavy eastbound acft on Twy V for Rwy 27 hold short at minimum thrust area sign. Acft with wingspan more than 171' 6" rstr fm taxi on Twy N btn Twy M7 and Twy T. Acft with wingspan more than 118' rstr fm taxi on Twy J north of Twy C3. Twy V btn Spot 7W and Rwy 27 rstr to acft with wingspan of 171' 6" or less. Twy V btn Twy S and Twy Y rstr to acft with tail height less than 65' 10" or less. Twy P1 btn Twy T and trml ramp and Twy P2 btn Twy T and trml ramp clsd. Apron J and N runup pad clsd. Twy J btn Twy P and R rstr to 15 mph for acft with wingspan more than 171'. Flight Notification Svc (ADCUS) avbl. NOTE: See Special Notices—Memphis Intl Airport (MEM) Noise Abatement Procedures.

CONTINUED ON NEXT PAGE

CONTINUED FROM PRECEDING PAGE

MILITARY REMARKS: ANG Ang ramp official business only; PPR—V966—8131. Birds invof arpt. BASH Phase II Apr—May and Aug—Oct; current Bird Watch cond not on ATIS. Transient acft rqr follow me assist entering ANG ramp. PPR 24 hr PN rqr; offl bus only. Ctc ramp control 121.8 for entry on ANG ramp. ANG freqs 138.95, 353.45. Aft hr ctc Command Post—DSN 726-7148; C901-291-7311/7312 or security forces—DSN 726-7101; C901-291-7101/7133. PPR DSN 726-7131/7505, C901-291-7131/7505. Mil ramp ops 1230-0430Z† Mon—Fri; clsd altn Mon and hol. Mil ramp clsd outside of pub HR without OG/CC apvl DSN 726-7557, C901-291-7557. Tnst acft maint not avbl. Refuel svc for otr than C17 acft rqr qualified crew chief or crewmembers. Non-C17 acft support prvdd by contract FBO on fld. Security avbl 24 hrs, DSN 726-7101, C901-291-7101. Comd Post DSN 726-7148/7311/7312, C901-291-7148/7311/7312. Opr 1230-0430Z† Mon—Fri, clsd altn Mon and hol due to altn work sched. Aflld mgr does not issue or store COMSEC for tran crews. Tmptry stor of classified materials up to TOP SECRET at Comd Post. ATIS info reports bird activity H24 in area. Mil ramp ops at reduced ARFF, downgraded to yellow.

AIRPORT MANAGER: 901-922-8000

WEATHER DATA SOURCES: ASOS 127.75 (901) 842-8483. TDWR.

COMMUNICATIONS: D-ATIS 127.75 UNICOM 122.95

RCO 122.2 (JACKSON RADIO)

Ⓡ APP CON 119.1 (176°-355°) 125.8 (356°-175°)

TOWER 118.3 (Rwy 09-27) 119.7 (Rwy 18C-36C, Rwy 18L-36R) 128.425 (Rwy 18R-36L)

GND CON 121.0 (Rwy 09-27) 121.65 (Rwy 18R-36L) 121.9 (Rwy 18C-36C, Rwy 18L-36R) CLNC DEL 125.2

Ⓡ DEP CON 124.15 (356°-175°) 124.65 (176°-355°)

CPDLC (LOGON KUSA)

PDC

AIRSPACE: CLASS B See VFR Terminal Area Chart.

VOR TEST FACILITY (VOT) 111.0

RADIO AIDS TO NAVIGATION: NOTAM FILE MEM.

(H) (H) VORTACW 117.5 MEM Chan 122 N35°00.91' W89°58.99' 010° 1.7 NM to fld. 363/1E.

ILS 109.5 I-MEM Rwy 09. Class IB. LOC unusable byd 20° right and 25° left of course.

ILS 111.95 I-SDU Rwy 18C. Class IE.

ILS/DME 111.15 I-EXS Chan 48(Y) Rwy 18L. Class ID.

ILS 109.9 I-OOI Rwy 18R. Class IA.

ILS 108.7 I-JIM Rwy 27. Class IA. Glideslope unusable byd 9 NM.

ILS/DME 110.5 I-TSE Chan 42 Rwy 36C. Class IIIE. LOC unusable byd 20° left and 20° right of course. Due to multiple clearance unlocks.

ILS/DME 108.9 I-OHN Chan 26 Rwy 36L. Class IIIE.

ILS/DME 111.35 I-MYO Chan 50(Y) Rwy 36R. Class IIIE.

COMM/NAV/WEATHER REMARKS: VOR Test Facility (VOT) unreliable. ANG Comd Post: radio call Graceland ops. PPR for taxi clnc from N and S cargo ramp prkg—121.9.

MERSY N35°30.94' W88°57.42'

MEMPHIS

NDB (MHW) 394 MKL 023° 5.4 NM to Mc Kellar-Sipes Rgnl. 499/1W.

MILLINGTON

CHARLES W BAKER (2M8) 4 SW UTC-6(-5DT) N35°16.71' W89°55.98'

MEMPHIS

247 B NOTAM FILE MKL

L-16H

RWY 18-36: H3499X75 (ASPH) S-25 MIRL

IAP

RWY 18: REIL. PAPI(P2L)—GA 4.0° TCH 40'. Tree.

RWY 36: REIL. PAPI(P2L)—GA 4.0° TCH 40'. Rgt tfc.

RWY 18U-36U: H1600X75 (ASPH) S-4

RWY 18U: Tree.

RWY 36U: Trees.

SERVICE: FUEL 100LL, JET A+

AIRPORT REMARKS: Attended Mon—Fri 1300-2100Z†. Unattended Thanksgiving and Christmas. Fixed-wing grass area tkof or Indg area na. Rwy 18U-36U CLOSED indef.

AIRPORT MANAGER: 901-358-0028

WEATHER DATA SOURCES: AWOS-AV 122.8 (901) 873-0903.

COMMUNICATIONS: CTAF/UNICOM 122.8

Ⓡ MEMPHIS APP CON 125.8

Ⓡ MEMPHIS DEP CON 124.15

CLEARANCE DELIVERY PHONE: For CD ctc Memphis Apch at 901-842-8457.

RADIO AIDS TO NAVIGATION: NOTAM FILE MEM.

MEMPHIS (H) (H) VORTACW 117.5 MEM Chan 122 N35°00.91' W89°58.99' 008° 16.0 NM to fld. 363/1E.