

**NASHVILLE INTL** (BNA)(KBNA) P (ANG) 5 SE UTC-6(-5DT) N36°07.47' W86°40.69'

ATLANTA

599 B LRA Class I, ARFF Index C NOTAM FILE BNA

H-6K, 9A, L-16J

**RWY 13-31:** H11030X150 (CONC-GRVD) S-75, D-175, 2D-250,

IAP, AD

2D/2D2-875 PCN 70 R/C/W/T HIRL

**RWY 13:** REIL. Thld dspclcd 800'. Trees. 0.7% up.

**RWY 31:** REIL. PAPI(P4R)—GA 3.0° TCH 51'. Thld dspclcd 741'. Tree.

**RWY 02C-20C:** H8001X150 (CONC-GRVD) S-75, D-209, 2D-350

PCN 56 R/B/W/T HIRL

**RWY 02C:** MALSR. PAPI(P4L)—GA 3.0° TCH 64'. RVR-T 0.5% up.

**RWY 20C:** REIL. PAPI(P4L)—GA 3.0° TCH 68'. RVR-R 0.4% up.

**RWY 02R-20L:** H8001X150 (CONC-GRVD) S-75, D-209, 2D-350

PCN 59 R/B/W/T HIRL CL

**RWY 02R:** ALSF2. TDZL. RVR-TMR 0.7% down.

**RWY 20L:** MALSR. PAPI(P4L)—GA 3.0° TCH 50'. RVR-TMR 0.3% up.

**RWY 02L-20R:** H7704X150 (CONC-GRVD) S-100, D-200, 2D-390,

2D/2D2-850 PCN 70 R/B/W/T HIRL CL 0.6% up S

**RWY 02L:** ALSF2. TDZL. PAPI(P4R)—GA 3.0° TCH 55'. RVR-TR

**RWY 20R:** MALSF. PAPI(P4R)—GA 3.0° TCH 79'. RVR-TR

**RUNWAY DECLARED DISTANCE INFORMATION**

**RWY 02C:**TORA-8001 TODA-8001 ASDA-7601 LDA-7601

**RWY 02L:**TORA-7702 TODA-7702 ASDA-7702 LDA-7702

**RWY 02R:**TORA-8000 TODA-8000 ASDA-8000 LDA-8000

**RWY 13:** TORA-10288 TODA-11029 ASDA-10288 LDA-9487

**RWY 20C:**TORA-8001 TODA-8001 ASDA-8001 LDA-8001

**RWY 20L:**TORA-8000 TODA-8000 ASDA-8000 LDA-8000

**RWY 20R:**TORA-7702 TODA-7702 ASDA-7702 LDA-7702

**RWY 31:** TORA-10228 TODA-11029 ASDA-10228 LDA-9487

**SERVICE:** S4 FUEL 100LL, JET A OX2, 4 MILITARY—FUEL 100LL, A

**NOISE:** All turbojet runways have noise abatement proc. Mil fighter/attack/trainer turbojets use Rwy 13-31 for arr & dep. NOTE: See Special Notices—Nashville Intl Airport (BNA) Noise Abatement Procedures.

**AIRPORT REMARKS:** Attended continuously. Bird act on and in/ov arpt. Do not confuse Twy S for Rwy 20C. Lgt'd jet blast fence 568' MSL 1167' NW of Rwy 13 thld; 598' MSL 1100' SE of Rwy 31 thld. No unauthorized 180° turns for acct 12500 lbs on asph sfcs. No fit over main terminal bldg is permitted. Read back of all rwy holding instr is rqrd. Pilots comply with all hold short instr particularly at Twy K and Rwy 20C apch, Twy L at Rwy 13 apch, and Twy H at Rwy 31 apch. C concourse taxilanes are, inner taxilane for outbd tfc and outer taxilane for inbd tfc. Terminal ramp uncontrolled. Flight Notification Service (ADCUS) avbl. NOTE: See Special Notices—Nashville Intl Airport (BNA) Noise Abatement Procedures.

**AIRPORT MANAGER:** 615-275-1612

**WEATHER DATA SOURCES:** ASOS (615) 360-6133 LLWAS. TDWR.

**COMMUNICATIONS:** D-ATIS 135.1 UNICOM 122.95

**TOWER** 118.6 **GND CON** 121.9 **CLNC DEL** 126.05

Ⓡ **APP CON** 118.4 (East)

Ⓡ **DEP CON** 118.4 (East) 119.35 (West)

CPDLC (LOGON KUSA)

PDC

**AIRSPACE:** CLASS C svc ctc **APP CON.**

**VOR TEST FACILITY (VOT)** 108.6

**RADIO AIDS TO NAVIGATION:** NOTAM FILE BNA.

(H) (H) **VORTACW** 114.1 BNA Chan 88 N36°08.22' W86°41.09' at fld. 566/2W.

VORTAC unusable:

062°-069° blo 6,000'

ILS 110.75 I-EZN Rwy 02C. Class IE.

ILS/DME 109.9 I-BNA Chan 36 Rwy 02L. Class IIIE.

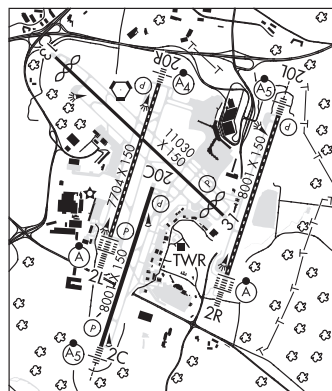
ILS/DME 111.75 I-UQU Chan 54(Y) Rwy 02R. Class IIIE. LOC unusable byd 20° right of course.

ILS/DME 109.35 I-SSX Chan 30(Y) Rwy 20L. Class IE.

ILS 111.3 I-VIY Rwy 20R. Class IB. LOC unusable byd 25° left and right of course.

ILS 111.95 I-PNO Rwy 31. Class IB.

**COMM/NAV/WEATHER REMARKS:** Monitor 122.95 for ramp advisories.



**NEW TAZEWELL MUNI** (See TAZEWELL on page 430)

**OBION** N36°17.86' W88°59.69' NOTAM FILE MKL.

ST LOUIS

**NDB (MHW/LOM)** 212 UC 005° 4.9 NM to Everett-Stewart Rgnl. 310/OE. NDB unmonitored.

L-16H