

NAPA CO (APC)(KAPC) 5 S UTC-8(-7DT) N38°12.79' W122°16.84'

SAN FRANCISCO

36 B NOTAM FILE APC MON Airport

H-3B, L-2F, 3A, A

RWY 01L-19R: H5930X150 (ASPH-GRVD) S-102, D-134, 2D-120

IAP, AD

PCN 41 F/D/X/T MIRL 0.3% up N

RWY 01L: MALS.

RWY 19R: PAPI(P4L)—GA 3.25° TCH 52'. Rgt tfc.

RWY 06-24: H5008X150 (CONC) S-60, D-76, 2D-120

PCN 21 R/C/W/T MIRL 0.4% up NE

RWY 06: REIL.

RWY 01R-19L: H2510X75 (ASPH) S-13.5 PCN 5 F/D/X/T 0.4% up N

RWY 01R: Rgt tfc.

LAND AND HOLD—SHORT OPERATIONS

LDG RWY	HOLD—SHORT POINT	AVBL LDG DIST
RWY 24	01L-19R	3700

SERVICE: S4 **FUEL** 100LL, JET A **OX** 3, 4 **LGT** When twr clsd ACTIVATE

MALS Rwy 01L; REIL Rwy 06, MIRL Rwy 01L-19R and Rwy 06-24—CTAF. PAPI Rwy 19R opr continuously.

AIRPORT REMARKS: Attended 1500-0400Z†. For fuel svc 0500-1400Z† call 707-224-0887. Unlgt bridge 1 NM S, 167' AGL. Asp apron strength 12,500-30,000 lbs gross weight single wheel. Due to arpt proximity to wetlands birds on and inofv of the arpt year around with highest concentration of activity of birds on the rwys during rainy weather.

Landing fee. Ldg fee chrgd to all air taxi, coml acft ops (exc flt instruction), and trans acft weighing more than 12500 lbs.

AIRPORT MANAGER: 707-253-4300

WEATHER DATA SOURCES: ASOS (707) 252-7916

COMMUNICATIONS: CTAF 118.7 ATIS 124.05 707-255-2847 UNICOM 122.95

Ⓡ **OAKLAND CENTER APP/DEP CON** 127.8 353.5

TOWER 118.7 (1500-0400Z†) **GND CON** 121.7 **CLNC DEL** 127.85

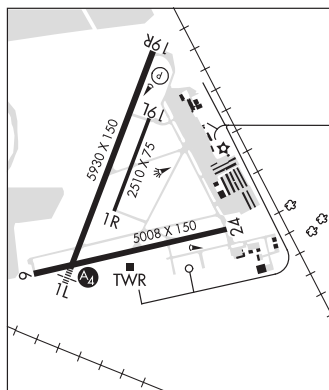
CLEARANCE DELIVERY PHONE: For CD when ATCT clsd ctc Oakland ARTCC at 510-745-3380.

AIRSPACE: CLASS D svc 1500-0400Z†; other times CLASS G.

RADIO AIDS TO NAVIGATION: NOTAM FILE APC.

SCAGGS ISLAND (L) **VORTAC** 112.1 SGD Chan 58 N38°10.76' W122°22.39' 048° 4.8 NM to fld. 5/17E.

ILS/DME 111.3 I-APC Chan 50 Rwy 01L. Class IE. LOC unmonitored when ATCT clsd. Glideslope unusable byd 4° left and 7° right of course. Autopilot coupled apchs not applicable blw 530' MSL (1.3 NM from thld).



NAVAL BASE VENTURA CO (See POINT MUGU NAS (NAVAL BASE VENTURA CO) on page 197)

NEEDLES (EED)(KEED) 5 S UTC-8(-7DT) N34°45.98' W114°37.40'

PHOENIX

983 B NOTAM FILE EED MON Airport

H-4I, L-7E

RWY 11-29: H5005X100 (ASPH) S-16, D-32 MIRL 1.3% up NW

IAP

RWY 11: REIL. PAPI(P2L)—GA 3.0° TCH 40'.

RWY 29: REIL. PAPI(P2L)—GA 3.0° TCH 40'.

RWY 02-20: H4235X100 (ASPH) S-16, D-32 MIRL 2.0% up SW

RWY 02: PAPI(P2L)—GA 3.0° TCH 30'.

RWY 20: PAPI(P2L)—GA 3.0° TCH 40'.

SERVICE: S2 **FUEL** 100LL, JET A **LGT** ACTIVATE MIRL Rwy 11-29 and Rwy 02-20, REIL Rwy 11 and Rwy 29—CTAF.

PAPI Rwy 11, Rwy 29, Rwy 02 and Rwy 20 opr continuously.

AIRPORT REMARKS: Unattended. Jet A fuel avbl 24 hrs. 100LL fuel avbl 24 hrs.

AIRPORT MANAGER: 760-247-2371

WEATHER DATA SOURCES: ASOS 128.325 (760) 326-4281.

COMMUNICATIONS: CTAF/UNICOM 123.0

RCO 122.1R 115.2T (PRESCOTT RADIO)

RCO 122.2 (RIVERSIDE RADIO)

Ⓡ **L.A. CENTER APP/DEP CON** 134.65

CLEARANCE DELIVERY PHONE: For CD if una to ctc on FSS freq, ctc Los Angeles ARTCC at 661-575-2079.

AIRSPACE: CLASS E svc 1600-0000Z†; other times CLASS G.

RADIO AIDS TO NAVIGATION: NOTAM FILE EED.

(H) (H) **VORTAC** 115.2 EED Chan 99 N34°45.96' W114°28.45' 255° 7.4 NM to fld. 620/15E.

VORTAC unusable:

100°-130° byd 27 NM blo 6,600'

170°-220° byd 20 NM blo 5,800'

220°-280° byd 35 NM blo 6,800'

TACAN AZIMUTH & DME unusable:

165°-220° byd 20 NM blo 8,000'

165°-220° byd 30 NM blo 12,000'