

DELTA

BLAKE FLD (AJZ)(KAJZ) 3 N UTC-7(-6DT) N38°47.14' W108°03.72'

5193 B TPA—6200(1007) NOTAM FILE DEN

RWY 03-21: H5598X75 (ASPH) S-30, D-30 MIRL 1.5% up NE

RWY 03: REIL. PAPI(P2L)—GA 3.0° TCH 40'. Rgt tfc.

RWY 21: REIL. PAPI(P2L)—GA 3.0° TCH 37'.

RWY 14-32: 2494X60 (DIRT) 1.4 % up NW

SERVICE: S3 FUEL 100LL, JET A OX3 LGT ACTVT REIL Rwy 03 and Rwy 21; MIRL Rwy 03-21—CTAF. PAPI Rwy 03 and 21 on consly.

AIRPORT REMARKS: Attended Mon-Fri 1500-0000Z. 24 hr self serve fuel avbl. After hrs emerg fone, Sheriff Dept 970-874-2000/aft hrs svc 970-209-0883. Plines 2640' NW Rwy 03-21, +52' AGL. Rwy 21 has turn around taxi has blue/white reflectors. Rwy 03 has +4' fence 580' from thld OB. Antelope on and invof arpt. Rwy 03-21 has 4' bushes 15-20' from rwy edge on both sides in various places. Rwy 03-21 slopes up to the NE.

AIRPORT MANAGER: 970-874-5181

WEATHER DATA SOURCES: AWOS-3 134.0 (970) 874-3251.

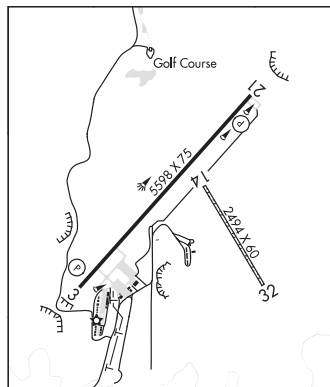
COMMUNICATIONS: CTAF/UNICOM 122.8

CLEARANCE DELIVERY PHONE: For CD ctc Denver ARTCC at 303-651-4257.

RADIO AIDS TO NAVIGATION: NOTAM FILE DEN.

GRAND JUNCTION (H) (H) VOR/W/DME 112.4 JNC Chan 71

N39°03.57' W108°47.55' 100° 37.9 NM to fld. 7100/15E.



DENVER
H-3E, L-9E
IAP

WESTWINDS (D17) 4 W UTC-7(-6DT) N38°45.51' W108°08.91'

5000 NOTAM FILE DEN

RWY 04-22: H4100X40 (ASPH)

RWY 22: Trees.

RWY 13-31: 2000X70 (GRVL-DIRT)

RWY 13: Hill.

RWY 31: Road.

AIRPORT REMARKS: Attended 1500-0000Z. Rwy 04-22 CLOSED to acft 8,500 lbs or more. +100' to 300' mountains lctd north, west and east of arpt at varying distances. Rwy 22 has 180' mountain 1500' from rwy end, apch slope 7:1. Rwy 13-31 soft when wet. Rwy 31 has +10' trees 150' from thld OB. +40' tree 60' from thld 50' rgt of cntrln. Rwy 04 has +120' terrain 2700' from thld 380' left of cntrln.

AIRPORT MANAGER: 303-829-1696

COMMUNICATIONS: CTAF/UNICOM 122.8

CLEARANCE DELIVERY PHONE: For CD ctc Denver ARTCC at 303-651-4257.

RADIO AIDS TO NAVIGATION: NOTAM FILE MTJ.

MONTROSE (H) (H) VOR/W/DME 117.1 MTJ Chan 118 N38°30.39' W107°53.96' 310° 19.1 NM to fld.

5713/12E. vDME unmonitored.

DME unusable:

011°-090° byd 26NM blo 15,000'

190°-250° byd 25 NM blo 15,000'

VOR unusable:

060°-090° byd 26NM blo 16,000'

190°-250° byd 25 NM blo 15,000'

DENVER
L-9E