

LOC/DME I-LUK	APP CRS	Rwy Idg	<b>6101</b>
<b>110.9</b>	<b>205°</b>	TDZE	<b>475</b>
Chan <b>46</b>		Apt Elev	<b>483</b>


# ILS or LOC RWY 21L

## CINCINNATI MUNI/LUNKEN FLD (LUK)

DME required.

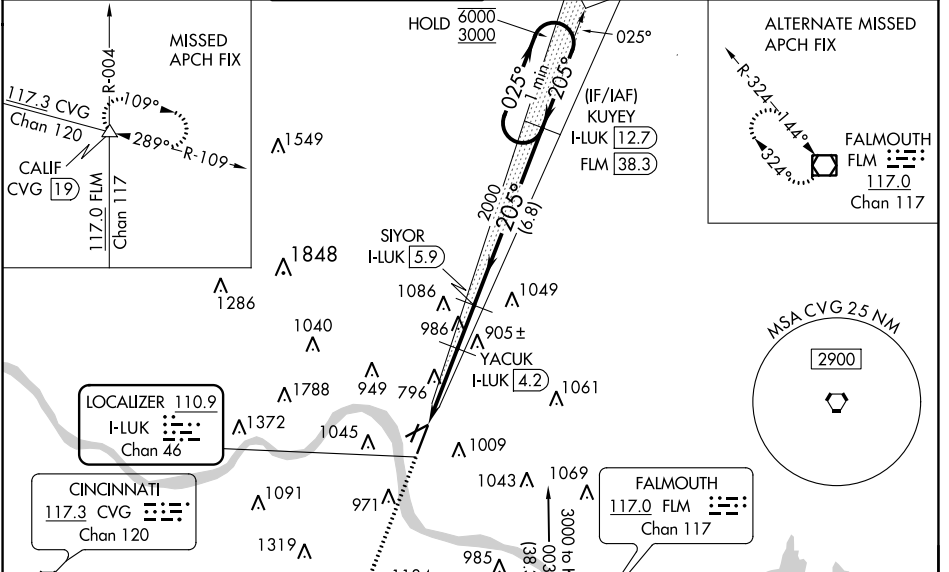
Circle NA for Cat D northwest of Rws 7 and 21R. Rwy 21L helicopter visibility reduction below 3/4 SM NA. VDP NA when using Cincinnati/Northern Kentucky Intl altimeter setting.

▼ When local altimeter setting not received, use Cincinnati/Northern Kentucky 21L altimeter setting and increase all DA 86 feet and all MDA 100 feet; increase S-LOC 21L Cat A/B visibility to RVR 5500 and Cat C/D to 2 SM. For inop ALS when using Cincinnati/Northern Kentucky Intl altimeter setting and increase S-ILS 21L all Cats visibility to RVR 6000 and S-LOC 21L Cat A to RVR 5500 and Cat C/D to 2 1/2 SM. For inop ALS, increase S-LOC 21L Cat A/B visibility to RVR 5500, and Cat C/D to 2 SM. Circling Rwy 3L, 7, 21R NA at night.

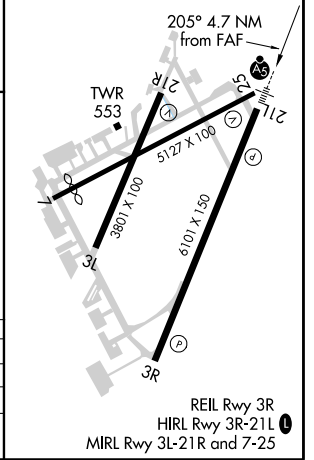
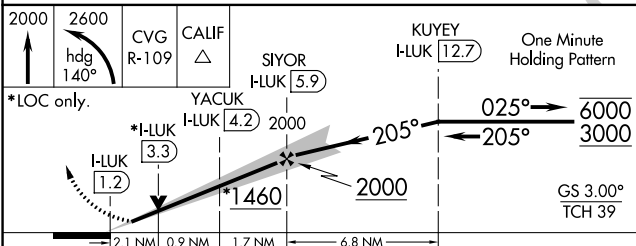
**MALS**  


**MISSED APPROACH:**  
 Climb to 2000 then climbing left turn to 2600 on heading 140° and CVG VORTAC R-109 to CALIF/CVG 19 DME and hold.

ATIS <b>120.25</b>	CINCINNATI APP CON <b>121.0 254.25</b>	LUNKEN TOWER ★ <b>118.7 (CTAF) 257.8</b>	GND CON <b>121.9</b>	CLNC DEL <b>121.9</b>	CLNC DEL <b>124.9</b> (when twr closed)	UNICOM <b>122.95</b>
-----------------------	---	---	-------------------------	--------------------------	---	-------------------------



ELEV <b>483</b>	<b>D</b> TDZE <b>475</b>
-----------------	--------------------------



CATEGORY	A	B	C	D
S-ILS 21L		798/40	323 (400-3/4)	
S-LOC 21L	1200/40	725 (800-3/4)	1200-1 5/8	725 (800-1 5/8)
<b>C</b> CIRCLING	1260-1 777 (800-1)	1360-1 1/4 877 (900-1 1/4)	1360-2 1/2 877 (900-2 1/2)	1400-3 917 (1000-3)

EC-2, 02 DEC 2021 to 30 DEC 2021

EC-2, 02 DEC 2021 to 30 DEC 2021