

WAAS CH <b>86701</b> <b>W25A</b>	APP CRS <b>246°</b>	Rwy Idg TDZE Apt Elev	<b>5127</b> <b>478</b> <b>483</b>
--	------------------------	-----------------------------	---

# RNAV (GPS) RWY 25

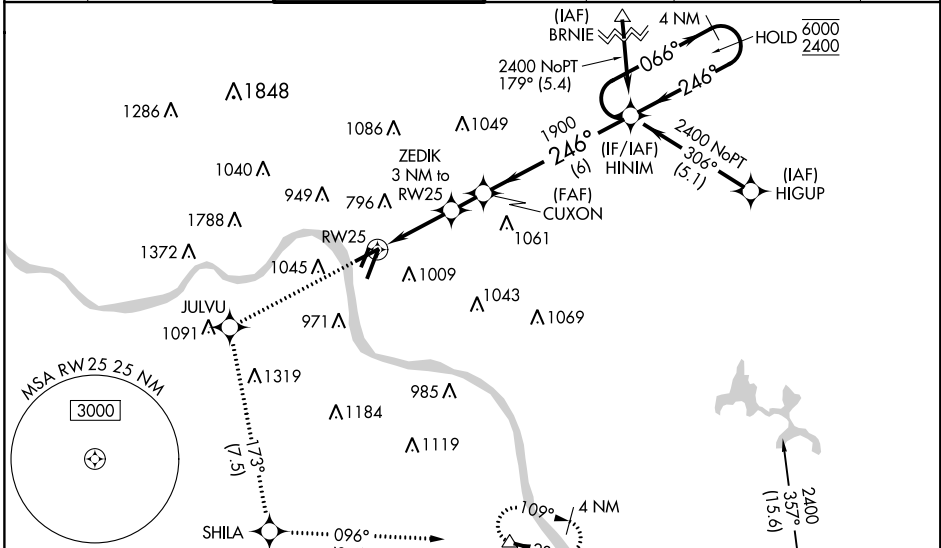
CINCINNATI MUNI/LUNKEN FLD (LUK)

RNP APCH.

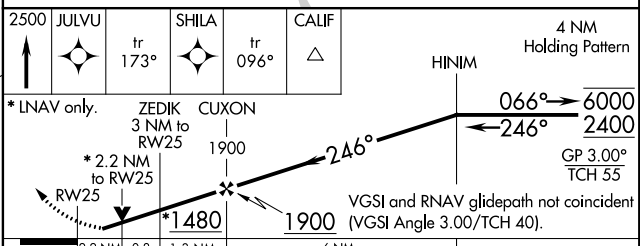
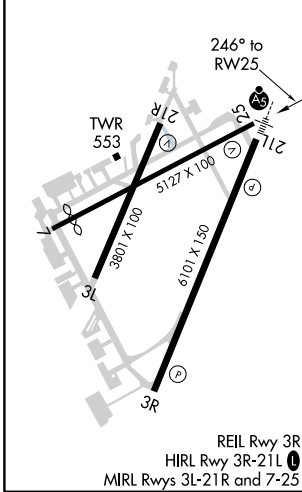
▼ Circling NA for Cat D north of Rwy 7 and northwest of Rwy 21R. Circling Rwy 3L, 7, 21R NA at night.  
 ▲ Baro-VNAV and VDP NA when using Cincinnati/Northern Kentucky Intl altimeter setting. Rwy 25 helicopter visibility reduction below 3/4 SM NA. For uncompensated Baro-VNAV systems, LNAV/VNAV NA below -15°C or above 54°C. When local altimeter setting not received, use Cincinnati/Northern Kentucky Intl altimeter setting and increase LPV DA to 961 feet, all visibilities 1/8 SM; increase LNAV/VNAV DA to 1248 feet; increase all MDAs 100 feet, LNAV Cat B visibility 1/4 SM, and LNAV Cat C/D visibility 1/2 SM; increase Circling Cat B/D visibility 1/4 SM and Circling Cat C visibility 1/2 SM.

MISSED APPROACH:  
 Climb to 2500 direct JULVU and on track 173° to SHILA and on track 096° to CALIF and hold, continue climb-in-hold to 2600.

ATIS <b>120.25</b>	CINCINNATI APP CON <b>121.0 254.25</b>	LUNKEN TOWER ★ <b>118.7 (CTAF) 257.8</b>	GND CON <b>121.9</b>	CLNC DEL <b>121.9</b>	CLNC DEL <b>124.9</b> (when twr closed)	UNICOM <b>122.95</b>
-----------------------	---	---	-------------------------	--------------------------	---	-------------------------



ELEV <b>483</b>	<b>D</b>	TDZE <b>478</b>
-----------------	----------	-----------------



CATEGORY	A	B	C	D
LPV DA		875-1¼	397 (400-1¼)	
LNAV/VNAV DA		1162-2½	684 (700-2½)	
LNAV MDA	1160-1	682 (700-1)	1160-2	682 (700-2)
<b>CIRCLING</b>	1300-1¼ 817 (900-1¼)	1360-1¼ 877 (900-1¼)	1360-2½ 877 (900-2½)	1360-2¾ 877 (900-2¾)

EC-2, 02 DEC 2021 to 30 DEC 2021

EC-2, 02 DEC 2021 to 30 DEC 2021