

# RNAV (GPS) RWY 3R

CINCINNATI MUNI/LUNKEN FLD (LUK)

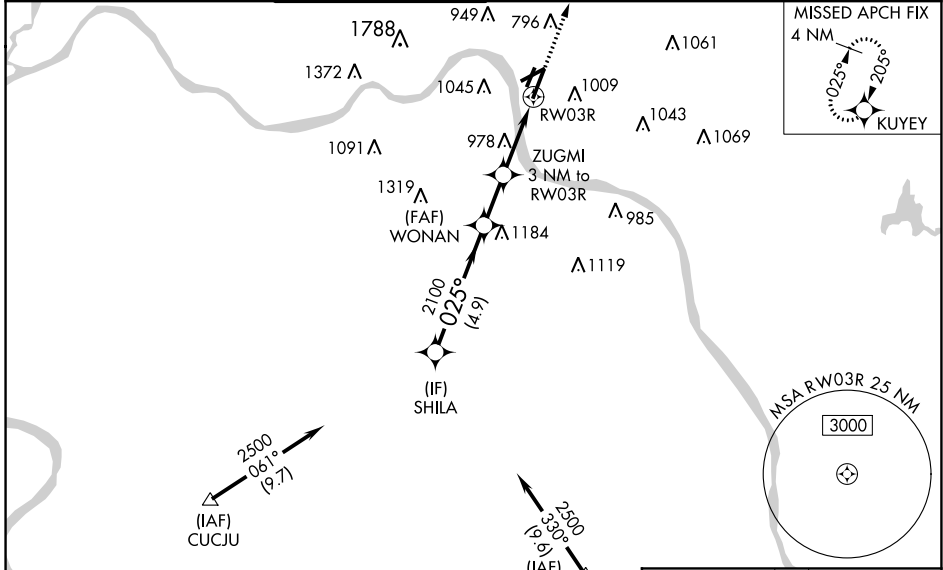
APP CRS	Rwy Idg	<b>6101</b>
<b>025°</b>	TDZE	<b>481</b>
	Apt Elev	<b>483</b>

RNP APCH.

**∇** Circling NA for Cat D north of Rwy 7 and northwest of Rwy 21R. Circling Rwy 3L, 7, 21R NA at night. Rwy 3R helicopter visibility reduction below 3/4 SM NA.  
**⚠** When local altimeter setting not received, use Cincinnati/Northern Kentucky Intl altimeter setting and increase all MDA 100 feet and LNAV Cat A visibility 1/4 SM; increase Circling Cat B/D visibility 1/4 SM and Circling Cat C visibility 1/2 SM. VDP NA when using Cincinnati/Northern Kentucky Intl altimeter setting.

MISSED APPROACH:  
Climb to 2600 direct KUYEY and hold.

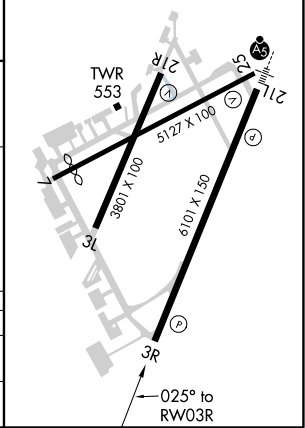
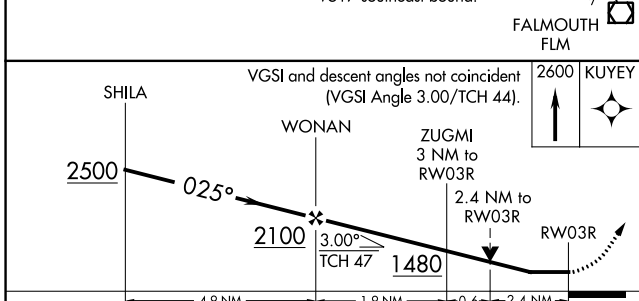
ATIS <b>120.25</b>	CINCINNATI APP CON <b>121.0 254.25</b>	LUNKEN TOWER ★ <b>118.7</b> (CTAF) <b>257.8</b>	GND CON <b>121.9</b>	CLNC DEL <b>121.9</b>	CLNC DEL <b>124.9</b> (when twr closed)	UNICOM <b>122.95</b>
-----------------------	---	--	-------------------------	--------------------------	---	-------------------------



Procedure NA for arrivals at CUCJU on V97 southbound.

Procedure NA for arrivals at FLM VOR/DME on V517 southeast bound.

ELEV	<b>483</b>	TDZE	<b>481</b>
REIL Rwy 3R			
HIRL Rwy 3R-21L			
MIRL Rws 3L-21R and 7-25			



CATEGORY	A	B	C	D
LNAV MDA	1280-1 799 (800-1)	1280-1 1/4 799 (800-1 1/4)	1280-2 1/2	799 (800-2 1/2)
<b>C</b> CIRCLING	1300-1 1/4 817 (900-1 1/4)	1360-1 1/4 877 (900-1 1/4)	1360-2 1/2 877 (900-2 1/2)	1360-2 3/4 877 (900-2 3/4)

EC-2, 02 DEC 2021 to 30 DEC 2021

EC-2, 02 DEC 2021 to 30 DEC 2021