

# HI-TACAN RWY 13R

TACAN Chan <b>87</b>	NGP <b>147°</b>	APCH CRS <b>147°</b>	Rwy ldg TDZE Arpt Elev	<b>8002</b> <b>13</b> <b>19</b>
-------------------------	--------------------	-------------------------	------------------------------	---------------------------------------

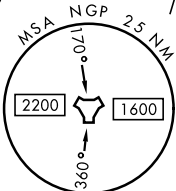
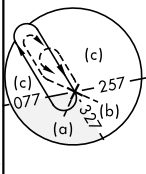
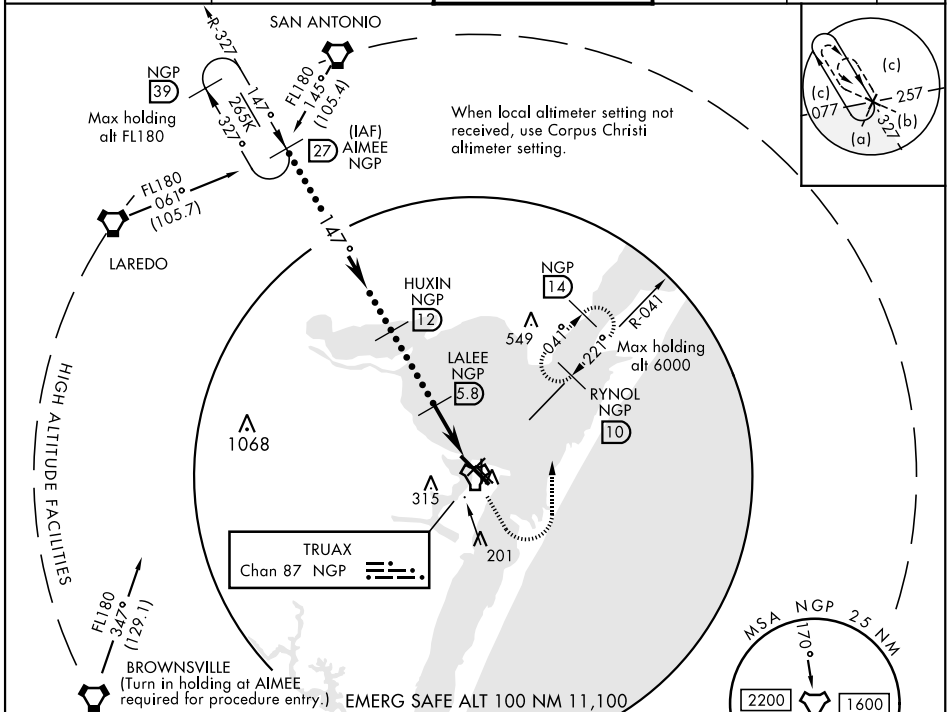
JAL-98 [USN]

CORPUS CHRISTI NAS (TRUAX FLD) (KNGP)

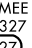
**MISSED APPROACH:** Climb to 1600 direct NGP TACAN and turn left to intercept R-041 and hold.

**SALSF** 

ATIS ★ <b>127.9 290.9</b>	CORPUS CHRISTI APP CON <b>120.9 348.725</b>	NAVY CORPUS TOWER ★ <b>134.85 0 340.2</b>	GND CON <b>118.7 257.85</b>	CLNC DEL <b>314.3</b>	ASR/ PAR
------------------------------	--	--	--------------------------------	--------------------------	-------------



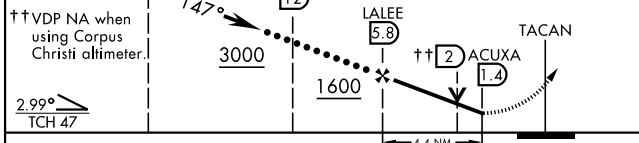
EMERG SAFE ALT 100 NM 11,100



15,000+  † or as assigned

↑ 1600 NGP

↑ 1600 NGP R-041


↑ 1600 RYNOL R-041



CATEGORY	C	D	E
S-13R*	400-7/8	387 (400-7/8)	
 CIRCLING	540-1 1/2 521 (600-1 1/2)	620-2 601 (700-2)	620-2 1/4 601 (700-2 1/4)
CORPUS CHRISTI ALTIMETER SETTING			
S-13R *	420-1	407 (500-1)	
 CIRCLING	580-1 1/2 561 (600-1 1/2)	660-2 641 (700-2)	660-2 1/4 641 (700-2 1/4)

ELEV 19 TDZE 13

147° to TACAN

HIRL Rwy 4-22, 13R-31L 

HIRL Rwy 13L-31R, 18-36

REIL Rwy 4-22, 13L-31R, 18-36, 31L

# HI-TACAN RWY 13R

SC-3, 02 DEC 2021 to 30 DEC 2021

SC-3, 02 DEC 2021 to 30 DEC 2021