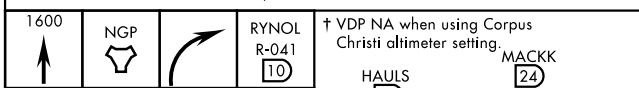
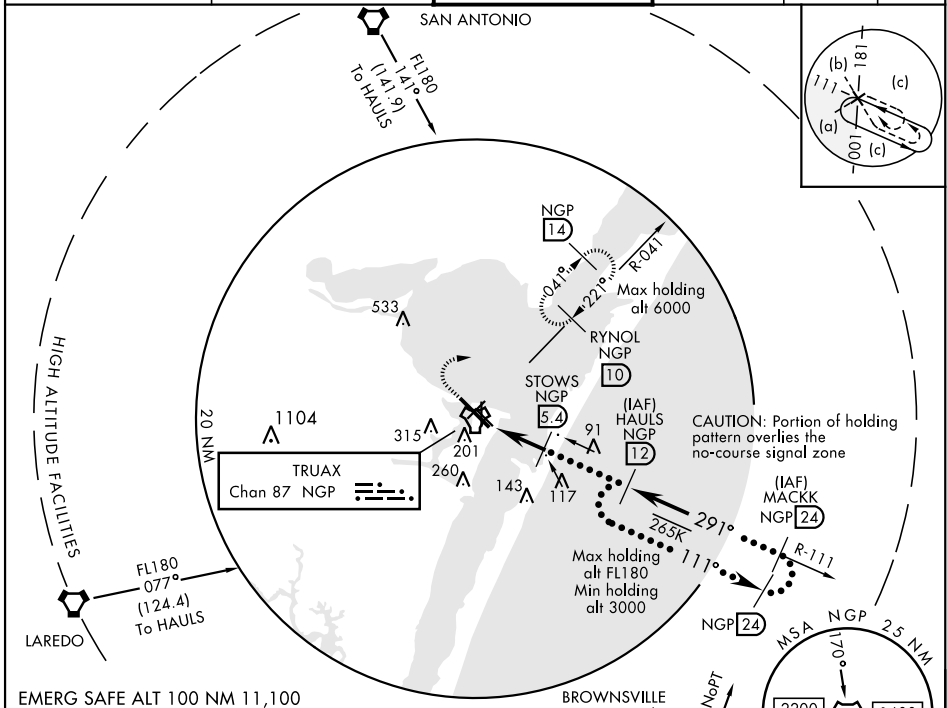


HI-TACAN RWY 31L

TACAN NGP Chan 87	APCH CRS 291°	Rwy Idg TDZE Arpt Elev 8002 18 19	JAL-98 [USN]	CORPUS CHRISTI NAS (TRUAX FLD) (KNGP)
-----------------------------	-------------------------	---	--------------	---------------------------------------

▼ When local altimeter setting not received, use Corpus Christi altimeter setting. MISSED APPROACH: Climb to 1600 direct TACAN and turn right to intercept R-041 to RYNOL and hold.

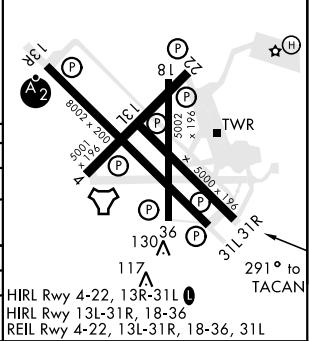
ATIS ★ 127.9 290.9	CORPUS CHRISTI APP CON 127.5 259.3	NAVY CORPUS TOWER ★ 134.85 0 340.2	GND CON 118.7 257.85	CLNC DEL 314.3	ASR/ PAR
------------------------------	--	--	--------------------------------	--------------------------	-------------



1600	NGP	RYNOL R-041	† VDP NA when using Corpus Christi altimeter setting.
↑			MACK (24)
<p>TACAN</p> <p>BAWWI (1) †</p> <p>STOWS (5.4)</p> <p>HAULS (12)</p> <p>MACK (24)</p> <p>15,000*</p> <p>3000</p> <p>291°</p> <p>4.4 NM</p> <p>1600</p> <p>* or as assigned</p> <p>2.98° TCH 45°</p>			

ELEV 19	TDZE 18
---------	---------

CATEGORY	C	D	E
S-31L	420-1 $\frac{1}{8}$	402 (500-1 $\frac{1}{8}$)	
CIRCLING	540-1 $\frac{1}{2}$ 521 (600-1 $\frac{1}{2}$)	620-2 601 (700-2)	620-2 $\frac{1}{4}$ 601 (700-2 $\frac{1}{4}$)
CORPUS CHRISTI ALTIMETER SETTING			
S-31L	460-1 $\frac{3}{8}$	442 (500-1 $\frac{3}{8}$)	
CIRCLING	580-1 $\frac{1}{2}$ 561 (600-1 $\frac{1}{2}$)	660-2 641 (700-2)	660-2 $\frac{1}{4}$ 641 (700-2 $\frac{1}{4}$)



CORPUS CHRISTI, TEXAS 27°42'N-97°17'W CORPUS CHRISTI NAS (TRUAX FLD) (KNGP)

Amtd 1 16JUL20

HI-TACAN RWY 31L

SC-3, 02 DEC 2021 to 30 DEC 2021

SC-3, 02 DEC 2021 to 30 DEC 2021