

CORPUS CHRISTI, TEXAS

# ILS Y or RNAV (GPS) RWY 13R

AL-98 [USN]

CORPUS CHRISTI NAS (TRUAX FLD) (KNGP)

LOC I-NGP <b>111.3</b>	APCH CRS <b>132°</b>	Rwy Idg 8002	TDZE 13	Arprt Elev 19
---------------------------	-------------------------	-----------------	------------	------------------

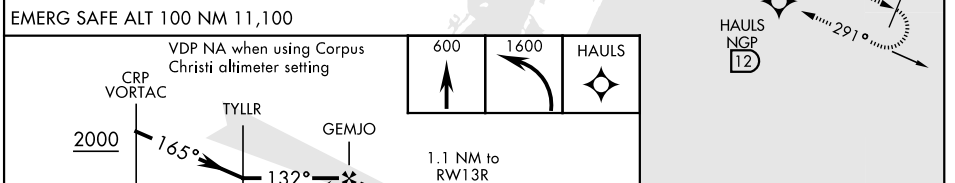
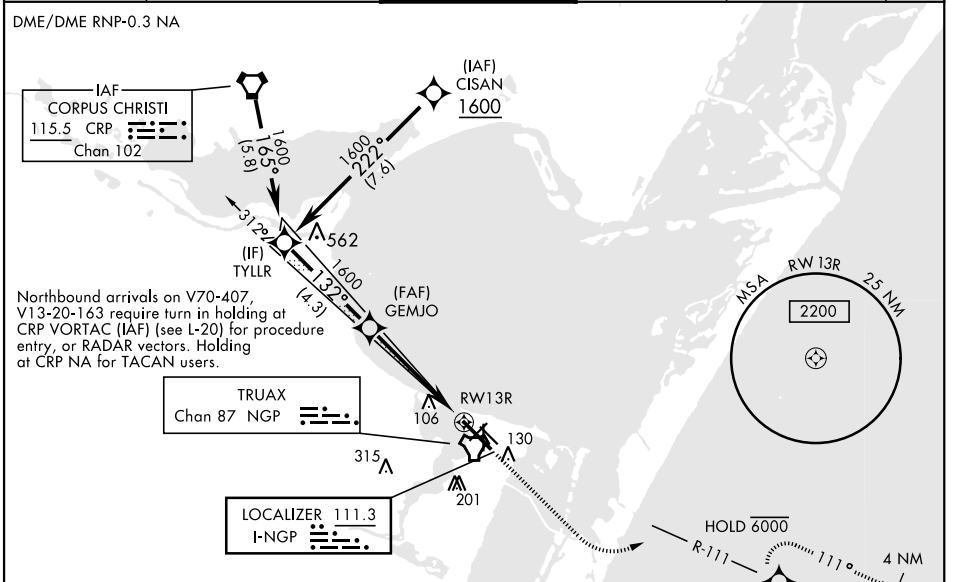
RNP APCH - DME/DME RNP 0.3 NA for LNAV.  
RNAV1 - GPS for ILS.

▼\*When ALS inop, increase CAT AB vis to 1 mile; CAT CD vis to 1 1/2 miles. When local altimeter setting not received, use Corpus Christi altimeter setting.

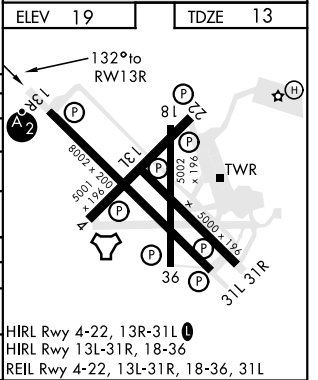
SALSF

MISSED APPROACH: Climb to 600, then climbing left turn to 1600 direct HAULS and hold.

ATIS★ <b>127.9 290.9</b>	CORPUS CHRISTI APP CON <b>128.675 343.75</b>	NAVY CORPUS TOWER★ <b>134.85 340.2</b>	GND CON <b>118.7 257.85</b>	CLNC DEL <b>314.3</b>	ASR/ PAR
-----------------------------	---	---	--------------------------------	--------------------------	-------------



CATEGORY	A	B	C	D
S-ILS 13R	213-3/4	200	(200-3/4)	
LNAV MDA*	400-3/4 387 (400-3/4)	400-7/8 387 (400-7/8)		
<b>C</b> CIRCLING	480-1 461 (500-1)	540-1 1/2 521 (600-1 1/2)	620-2 601 (700-2)	
CORPUS CHRISTI ALTIMETER SETTING				
S-ILS 13R	242-3/4	232	(300-3/4)	
LNAV MDA*	420-3/4 407 (500-3/4)	420-1 407 (500-1)		
<b>C</b> CIRCLING	500-1 481 (500-1)	520-1 501 (600-1)	580-1 1/2 561 (600-1 1/2)	660-2 641 (700-2)



CORPUS CHRISTI, TEXAS 27°42'N-97°17'W CORPUS CHRISTI NAS (TRUAX FLD) (KNGP)

Amdt 1 16JUL20

# ILS Y or RNAV (GPS) RWY 13R

SC-3, 02 DEC 2021 to 30 DEC 2021

SC-3, 02 DEC 2021 to 30 DEC 2021