

CORPUS CHRISTI, TEXAS

ILS Z or LOC/DME RWY 13R

LOC I-NGP 111.3	APCH CRS 132°	Rwy ldg TDZE Arprt Elev 8002 13 19
---------------------------	-------------------------	--

AL-98 [USN]

CORPUS CHRISTI NAS (TRUAX FLD) (KNGP)

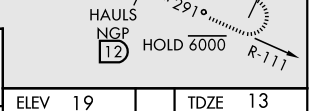
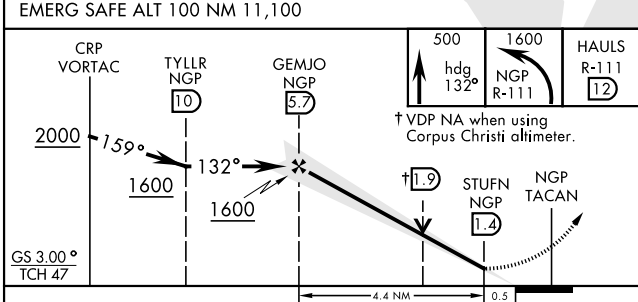
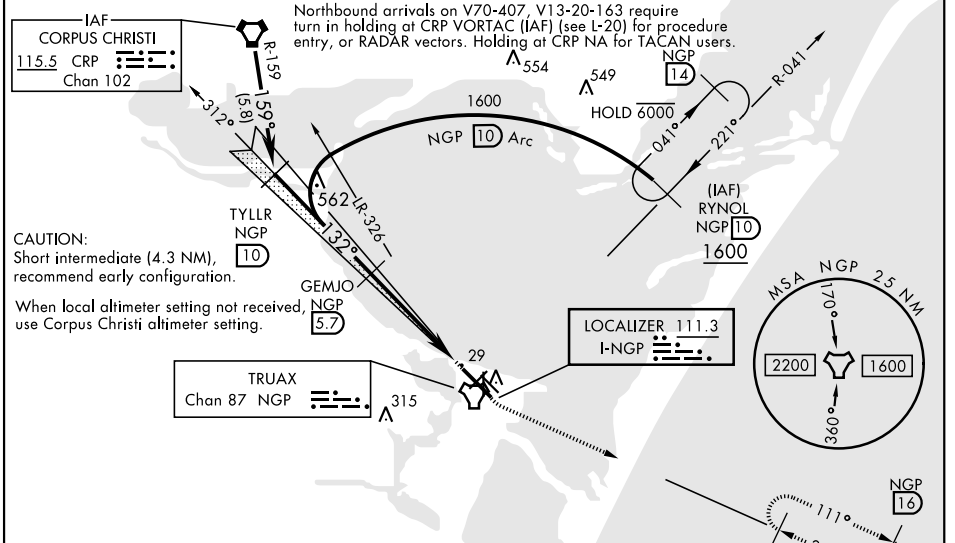
DME Required.

▼ * When ALS inop, increase vis to 1 mile.
** When ALS inop, increase CAT AB vis to 1 mile,
CAT CD to 1 1/8 miles.

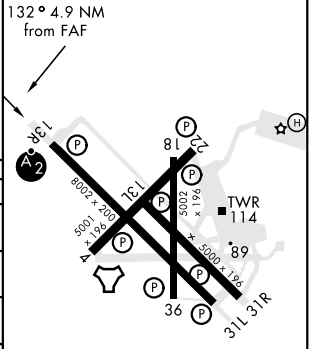


MISSED APPROACH: Climb to 500 hdg 132°, then climbing left turn to 1600 and intercept NGP TACAN R-111 and hold.

ATIS★ 127.9 290.9	APP CON 128.675 343.75	NAVY CORPUS TOWER★ 134.85 340.2	GND CON 118.7 257.85	CLNC DEL 314.3	ASR/ PAR
-----------------------------	----------------------------------	---	--------------------------------	--------------------------	-------------



ELEV 19	TDZE 13
---------	---------



CATEGORY	A	B	C	D
S-ILS 13R	213-3/4	200	(200-3/4)	
S-LOC/DME 13R*	380-3/4	367	(400-3/4)	
C CIRCLING	480-1 461 (500-1)	540-1 1/2 521 (600-1 1/2)	620-2 601 (700-2)	
CORPUS CHRISTI ALTIMETER SETTING				
S-ILS 13R	245-3/4	232	(300-3/4)	
S-LOC/DME 13R**	420-3/4 407 (500-3/4)	420-1 407 (500-1)		
C CIRCLING	500-1 481 (500-1)	520-1 501 (600-1)	580-1 1/2 561 (600-1 1/2)	660-2 641 (700-2)

HIRL Rwy 4-22, 13R-31L				
HIRL Rwy 13L-31R, 18-36				
REIL Rwy 4-22, 13L-31R, 18-36, 31L				
FAF to MAP 4.4 NM				
Knots	60	90	120	150 180
Min:Sec	4:24	2:56	2:12	1:46 1:28

CORPUS CHRISTI, TEXAS
Amdt 1 16JUL20

27°42'N-97°17'W

CORPUS CHRISTI NAS (TRUAX FLD) (KNGP)

ILS Z or LOC/DME RWY 13R

SC-3, 02 DEC 2021 to 30 DEC 2021

SC-3, 02 DEC 2021 to 30 DEC 2021