

CORPUS CHRISTI, TEXAS

RNAV (GPS) RWY 13L

CORPUS CHRISTI NAS (TRUAX FLD) (KNGP)

AL-98 [USN]

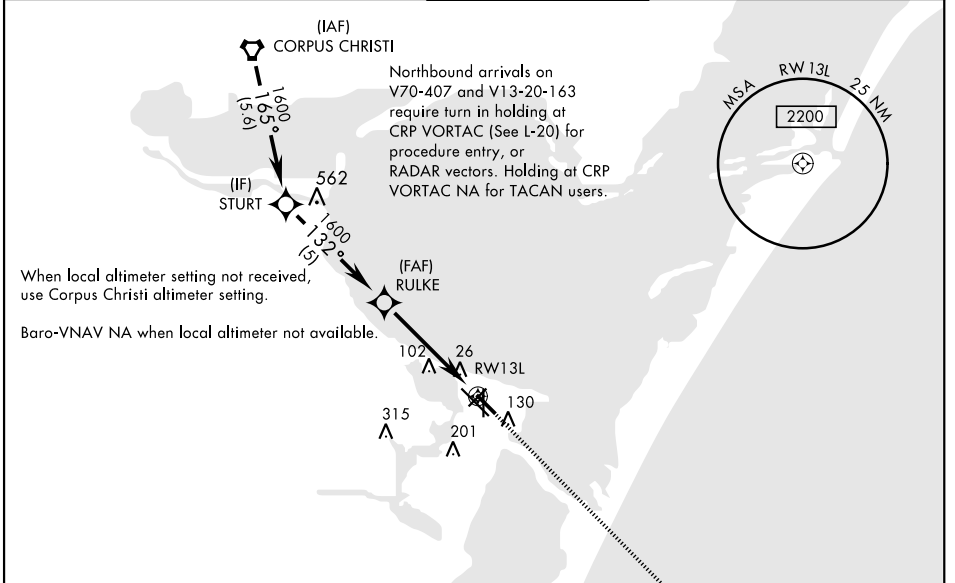
APCH CRS	Rwy Idg	5000
132°	TDZE	19
	Arprt Elev	19

RNP APCH - DME/DME RNP-0.3 NA.

For uncompensated Baro-VNAV systems, LNAV/VNAV NA below -15°C (5°F) or above 54°C (129°F).

MISSED APPROACH: Climb to 600, then climbing right turn to 1600 direct POLCK and hold.

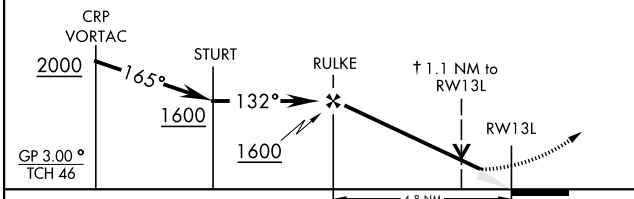
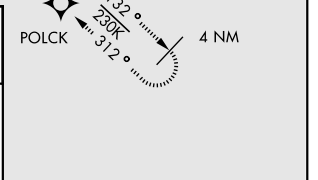
ATIS ★ 127.9 290.9	CORPUS CHRISTI APP CON 128.675 343.75	NAVY CORPUS TOWER ★ 134.85 340.2	GND CON 118.7 257.85	CLNC DEL 314.3	ASR/ PAR
------------------------------	---	--	--------------------------------	--------------------------	-------------



EMERG SAFE ALT 100 NM 11,100

† LNAV only
VDP NA when using Corpus Christi altimeter setting.

600	1600	POLCK



CATEGORY	A	B	C	D
LNAV/VNAV DA	269-3/4		250 (300-3/4)	
LNAV MDA	400-1	381 (400-1)	400-1 1/8	381 (400-1 1/8)
CIRCLING	480-1	461 (500-1)	540-1 1/2 521 (600-1 1/2)	620-2 601 (700-2)
CORPUS CHRISTI ALTIMETER SETTING				
LNAV MDA	420-1	401 (500-1)	420-1 1/8	401 (500-1 1/8)
CIRCLING	500-1 481 (500-1)	520-1 501 (600-1)	580-1 1/2 561 (600-1 1/2)	660-2 641 (700-2)

ELEV 19	TDZE 19
---------	---------

132° to RWY 13L

HIRL Rwy 4-22, 13R-31L
HIRL Rwy 13L-31R, 18-36
REIL Rwy 4-22, 13L-31R, 18-36, 31L

CORPUS CHRISTI, TEXAS

27°42'N-97°17'W

CORPUS CHRISTI NAS (TRUAX FLD) (KNGP)

Amtd 1 16JUL20

RNAV (GPS) RWY 13L

SC-3, 02 DEC 2021 to 30 DEC 2021

SC-3, 02 DEC 2021 to 30 DEC 2021