

RNAV (GPS) RWY 18

AL-98 [USN]

CORPUS CHRISTI NAS (TRUAX FLD) (KNGP)

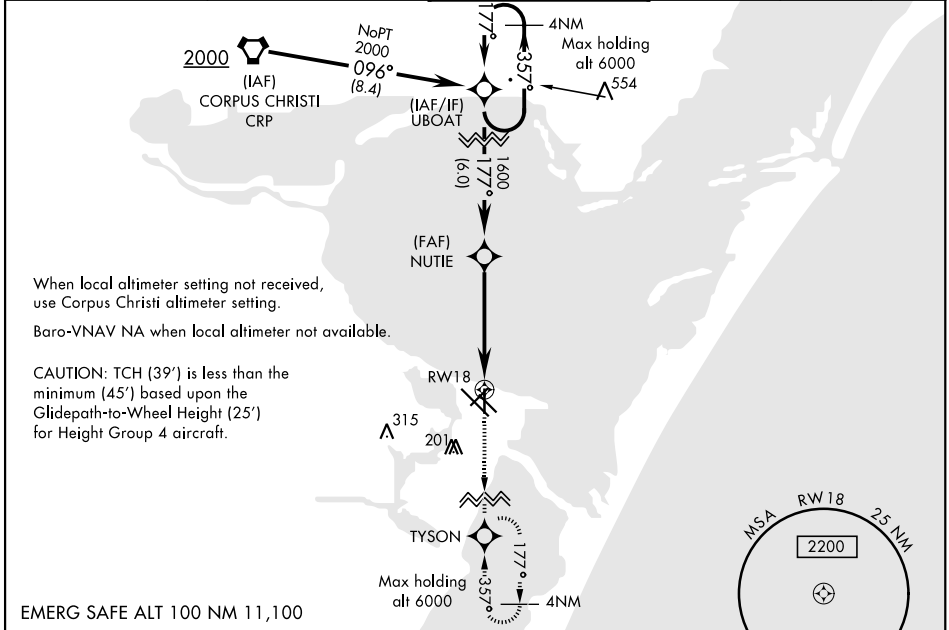
APCH CRS	Rwy Idg	5002
177°	TDZE	19
	Arprt Elev	19

RNP APCH - DME/DME RNP-0.3 NA.

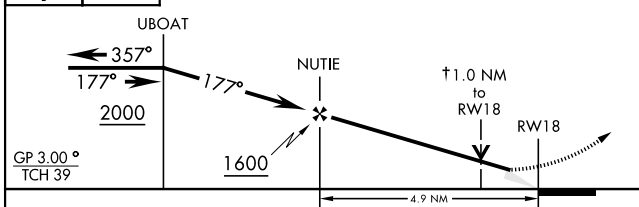
For uncompensated Baro-VNAV systems, LNAV/VNAV NA below -15° C (5° F) or above 54° C (129° F).

MISSED APPROACH: Climb to 2000 direct TYSON and hold.

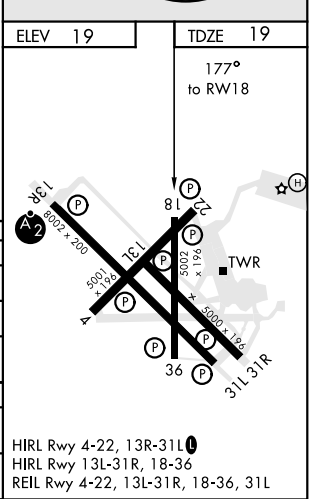
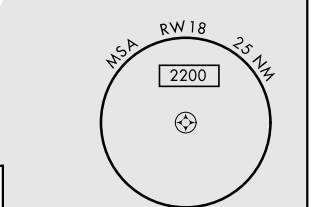
ATIS ★ 127.9 290.9	CORPUS CHRISTI APP CON 128.675 343.75	NAVY CORPUS TOWER ★ 134.85 340.2	GND CON 118.7 257.85	CLNC DEL 314.3	ASR/ PAR
------------------------------	---	--	--------------------------------	--------------------------	-------------



2000	↑	TYSON	◆	† LNAV only VDP NA when using Corpus Christi altimeter setting.
------	---	-------	---	--



CATEGORY	A	B	C	D
LNAV/VNAV DA	269-¾	250	(300-¾)	276-¾ (300-¾)
LNAV MDA	380-1		361	(400-1)
C CIRCLING	480-1	461 (500-1)	540-1½ 521 (600-1½)	620-2 601 (700-2)
CORPUS CHRISTI ALTIMETER SETTING				
LNAV MDA	400-1	381 (400-1)	400-1½	381 (400-1½)
C CIRCLING	500-1 481 (500-1)	520-1 501 (600-1)	580-1½ 561 (600-1½)	660-2 641 (700-2)



HIRL Rwy 4-22, 13R-31L
HIRL Rwy 13L-31R, 18-36
REIL Rwy 4-22, 13L-31R, 18-36, 31L

RNAV (GPS) RWY 18

SC-3, 02 DEC 2021 to 30 DEC 2021

SC-3, 02 DEC 2021 to 30 DEC 2021