

CORPUS CHRISTI, TEXAS

# RNAV (GPS) RWY 22

AL-98 [USN] CORPUS CHRISTI NAS (TRUAX FLD) (KNGP)

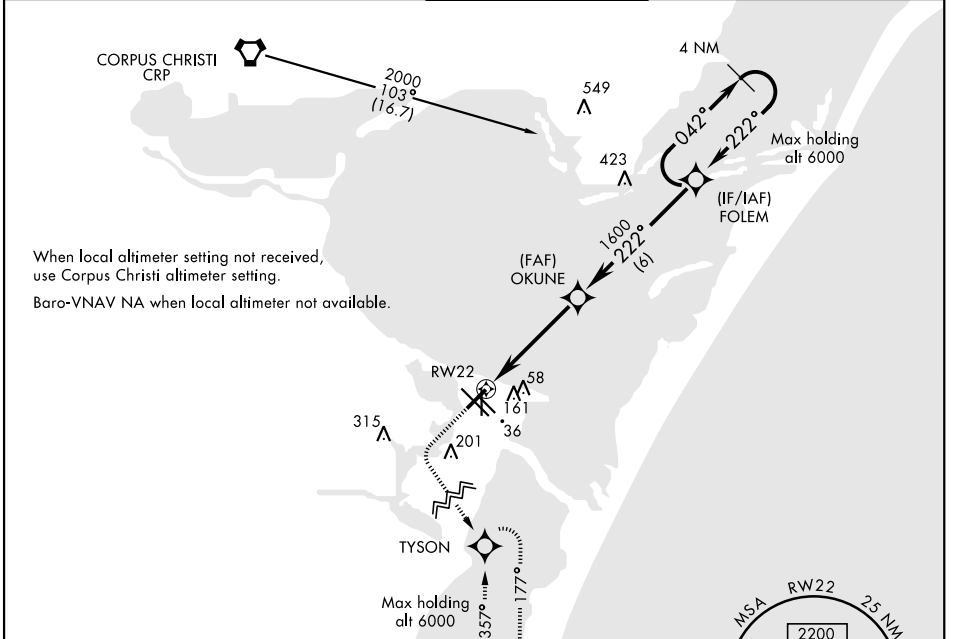
APCH CRS	Rwy Idg	5001
222°	TDZE	15
	Arprt Elev	19

RNP APCH - DME/DME RNP-0.3 NA.

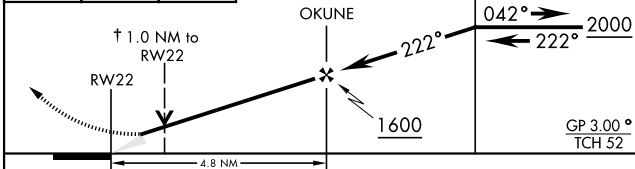
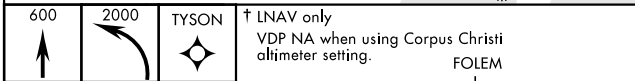
For uncompensated Baro-VNAV systems, LNAV/VNAV NA below -15° C (5° F) or above 54° C (129° F).

MISSED APPROACH: Climb to 600, then climbing left turn to 2000 direct TYSON and hold.

ATIS ★ <b>127.9 290.9</b>	CORPUS CHRISTI APP CON <b>128.675 343.75</b>	NAVY CORPUS TOWER ★ <b>134.85 340.2</b>	GND CON <b>118.7 257.85</b>	CLNC DEL <b>314.3</b>	ASR/ PAR
------------------------------	---	--	--------------------------------	--------------------------	-------------



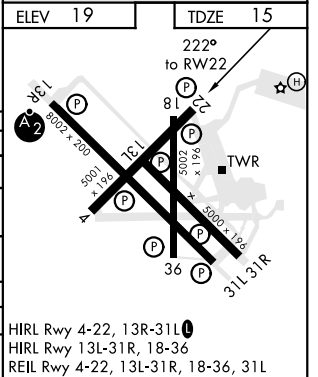
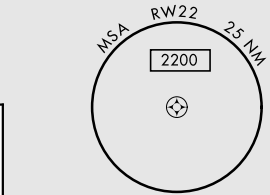
EMERG SAFE ALT 100 NM 11,100



CATEGORY	A	B	C	D
LNAV MDA	380-1		365	(400-1)
LNAV/VNAV DA	290-7/8 275 (300-7/8)	301-7/8 286 (300-7/8)	309-7/8 294 (300-7/8)	320-7/8 305 (400-7/8)
CIRCLING	480-1	461 (500-1)	540-1½ 521 (600-1½)	620-2 601 (700-2)

CORPUS CHRISTI ALTIMETER SETTING

LNAV MDA	400-1	385 (400-1)	400-1½	385 (400-1½)
CIRCLING	500-1 481 (500-1)	520-1 501 (600-1)	580-1½ 561 (600-1½)	660-2 641 (700-2)



CORPUS CHRISTI, TEXAS  
Amdt 1 16JUL20

27°42'N-97°17'W

CORPUS CHRISTI NAS (TRUAX FLD) (KNGP)

# RNAV (GPS) RWY 22

HIRL Rwy 4-22, 13R-31L  
HIRL Rwy 13L-31R, 18-36  
REIL Rwy 4-22, 13L-31R, 18-36, 31L

SC-3, 02 DEC 2021 to 30 DEC 2021

SC-3, 02 DEC 2021 to 30 DEC 2021