

CORPUS CHRISTI, TEXAS

RNAV (GPS) RWY 31R

CORPUS CHRISTI NAS (TRUAX FLD) (KNGP)

AL-98 [USN]

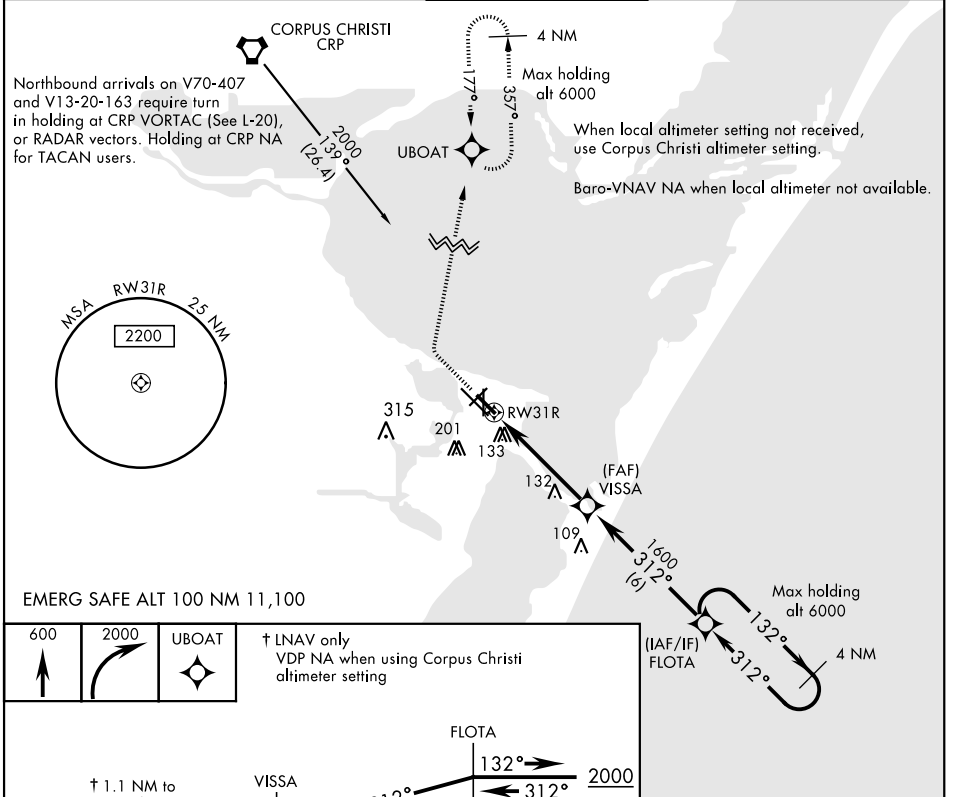
APCH CRS	Rwy ldg	5000
312°	TDZE	19
	Arprt Elev	19

RNP APCH - DME/DME RNP-0.3 NA.

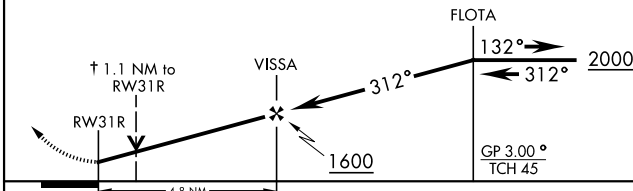
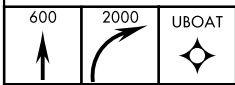
MISSED APPROACH: Climb to 600, then climbing right turn to 2000 direct UBOAT and hold.

For uncompensated Baro-VNAV systems, LNAV/VNAV NA below -15°C (5°F) or above 54°C (129°F).

ATIS ★ 127.9 290.9	CORPUS CHRISTI APP CON 128.675 343.75	NAVY CORPUS TOWER ★ 134.85 340.2	GND CON 118.7 257.85	CLNC DEL 314.3	ASR/PAR
------------------------------	---	--	--------------------------------	--------------------------	---------

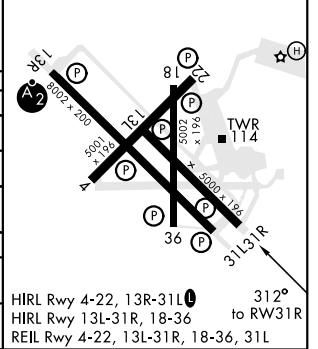


EMERG SAFE ALT 100 NM 11,100



CATEGORY	A	B	C	D
LNAV/VNAV DA	412-1½		393	(400-1½)
LNAV MDA	420-1	401 (500-1)	420-1½	401 (500-1½)
C CIRCLING	480-1	461 (500-1)	540-1½ 521 (600-1½)	620-2 601 (700-2)
CORPUS CHRISTI ALTIMETER SETTING				
LNAV MDA	460-1	441 (500-1)	460-1½	441 (500-1½)
C CIRCLING	500-1 481 (500-1)	520-1 501 (600-1)	580-1½ 561 (600-1½)	660-2 641 (700-2)

ELEV 19	TDZE 19
---------	---------



CORPUS CHRISTI, TEXAS

27°42'N-97°17'W

CORPUS CHRISTI NAS (TRUAX FLD) (KNGP)

Amdt 1 16JUL20

RNAV (GPS) RWY 31R

SC-3, 02 DEC 2021 to 30 DEC 2021

SC-3, 02 DEC 2021 to 30 DEC 2021