

CORPUS CHRISTI, TEXAS

# RNAV (GPS) RWY 36

APCH CRS	Rwy Idg	5002
357°	TDZE	19
	Arprt Elev	19

AL-98 [USN]

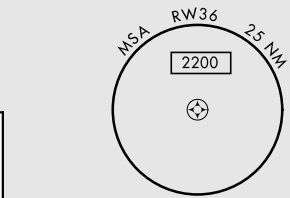
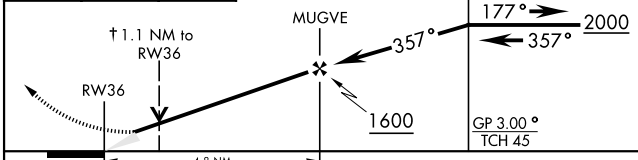
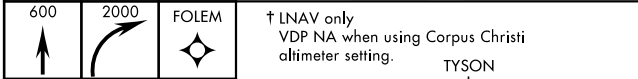
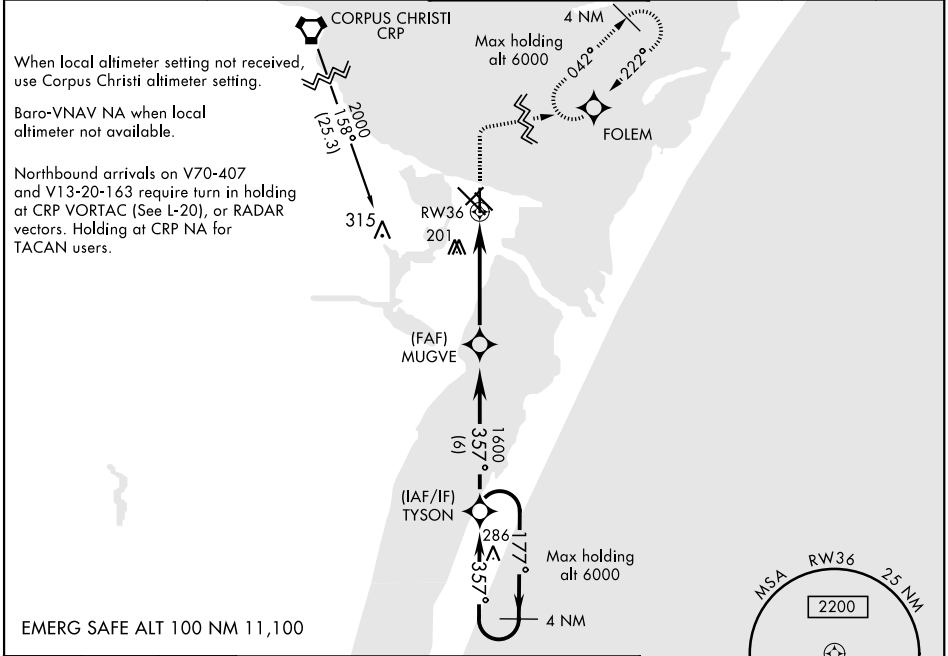
CORPUS CHRISTI NAS (TRUAX FLD) (KNGP)

RNP APCH - DME/DME RNP-0.3 NA.

MISSED APPROACH: Climb to 600, then climbing right turn to 2000 direct FOLEM and hold.

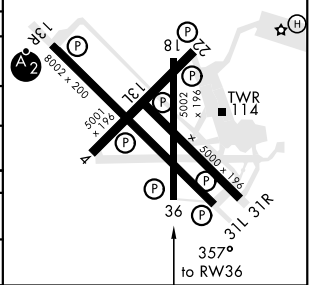
For uncompensated Baro-VNAV systems, LNAV/VNAV NA below -15°C C (5°F) or above 54°C C (129°F).

ATIS ★	CORPUS CHRISTI APP CON	NAVY CORPUS TOWER ★	GND CON	CLNC DEL	ASR/PAR
127.9 290.9	128.675 343.75	134.85 0 340.2	118.7 257.85	314.3	



CATEGORY	A	B	C	D
LNAV MDA	420-1	401 (500-1)	420-1½	401 (500-1½)
LNAV/VNAV DA	420-1½		401 (500-1½)	
CIRCLING	480-1	461 (500-1)	540-1½ 521 (600-1½)	620-2 601 (700-2)
CORPUS CHRISTI ALTIMETER SETTING				
LNAV MDA	460-1	441 (500-1)	460-1½	441 (500-1½)
CIRCLING	500-1 481 (500-1)	520-1 501 (600-1)	580-1½ 561 (600-1½)	660-2 641 (700-2)

ELEV 19	TDZE 19
HIRL Rwy 4-22, 13R-31L	
HIRL Rwy 13L-31R, 18-36	
REIL Rwy 4-22, 13L-31R, 18-36, 31L	



CORPUS CHRISTI, TEXAS  
Amdt 1 16JUL20

27°42'N-97°17'W

CORPUS CHRISTI NAS (TRUAX FLD) (KNGP)

# RNAV (GPS) RWY 36

SC-3, 02 DEC 2021 to 30 DEC 2021

SC-3, 02 DEC 2021 to 30 DEC 2021