

CORPUS CHRISTI, TEXAS

RNAV (GPS) RWY 4

CORPUS CHRISTI NAS (TRUAX FLD) (KNGP)

AL-98 [USN]

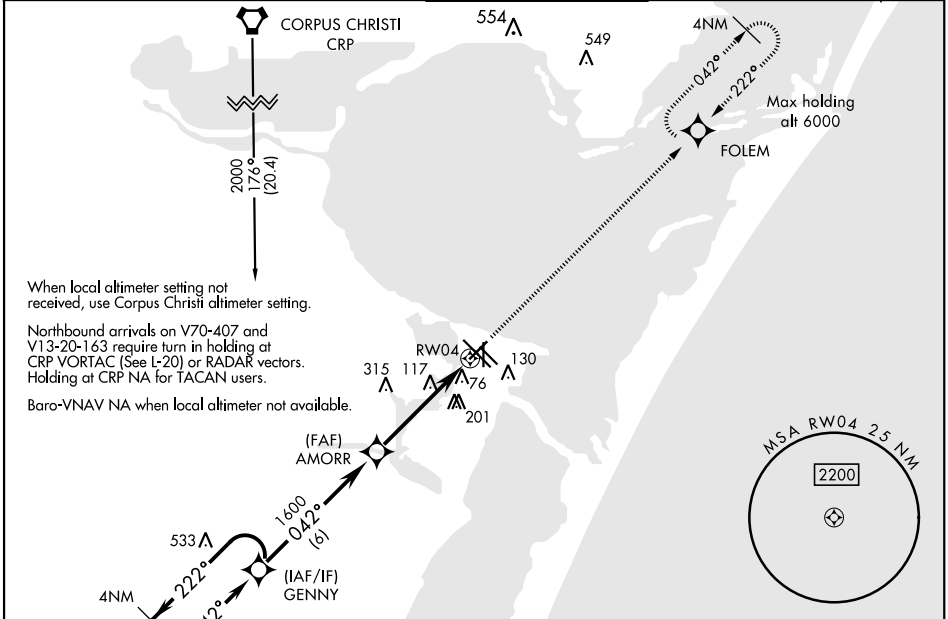
APCH CRS	Rwy ldg	5001
042°	TDZE	17
	Arpt Elev	19

RNP APCH - DME/DME RNP 0.3 NA.

▼ For uncompensated Baro-VNAV systems, LNAV/VNAV NA below -15°C (5°F) or above 42°C (108°F)

MISSED APPROACH: Climb to 2000 direct FOLEM and hold.

ATIS ★ 127.9 290.9	CORPUS CHRISTI APP CON 128.675 343.75	NAVY CORPUS TOWER ★ 134.85 340.2	GND CON 118.7 257.85	CLNC DEL 314.3	ASR/ PAR
------------------------------	---	--	--------------------------------	--------------------------	-------------



SC-3, 02 DEC 2021 to 30 DEC 2021

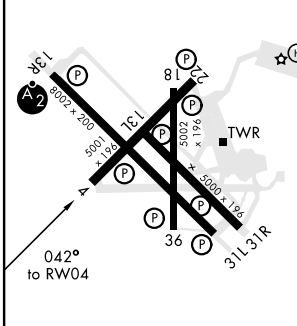
SC-3, 02 DEC 2021 to 30 DEC 2021

† LNAV only
VDP NA when using Corpus Christi altimeter setting.

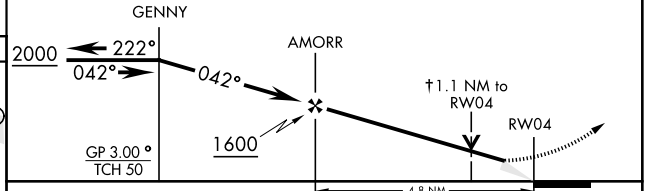
2000	FOLEM

EMERG SAFE ALT 100 NM 11,100

ELEV 19	TDZE 17
---------	---------



HIRL Rwy 4-22, 13R-31L
HIRL Rwy 13L-31R, 18-36
REIL Rwy 4-22, 13L-31R, 18-36, 31L



CATEGORY	A	B	C	D
LNAV/VNAV DA	268- ³ / ₄		251 (300- ³ / ₄)	
LNAV MDA	420-1	403 (500-1)	420-1 ¹ / ₈	403 (500-1 ¹ / ₈)
CIRCLING	480-1	461 (500-1)	540-1 ¹ / ₂	620-2
			521 (600-1 ¹ / ₂)	601 (700-2)
CORPUS CHRISTI ALTIMETER SETTING				
LNAV MDA	440-1	423 (500-1)	440-1 ¹ / ₄	423 (500-1 ¹ / ₄)
CIRCLING	500-1	520-1	580-1 ¹ / ₂	660-2
	481 (500-1)	501 (600-1)	561 (600-1 ¹ / ₂)	641 (700-2)

CORPUS CHRISTI, TEXAS

27°42'N-97°17'W

CORPUS CHRISTI NAS (TRUAX FLD) (KNGP)

Amtd 1 16JUL20

RNAV (GPS) RWY 4