

CORPUS CHRISTI, TEXAS

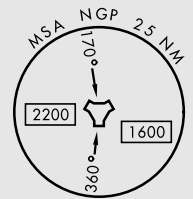
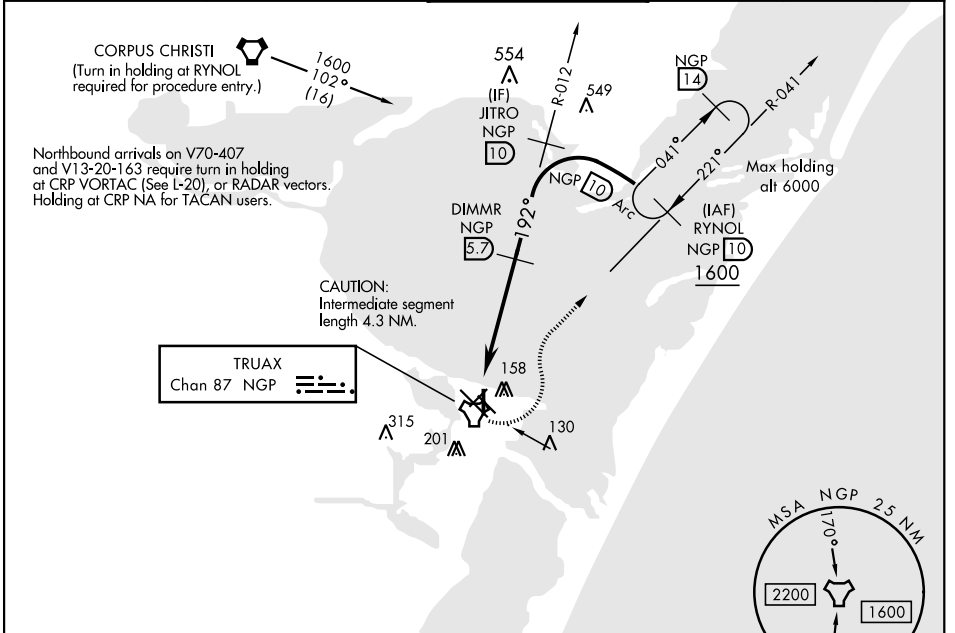
TACAN RWY 18

TACAN NGP Chan 87	APCH CRS 192°	Rwy Idg TDZE Arprt Elev	5002 19 19
-----------------------------	-------------------------	-------------------------------	---------------------------------------

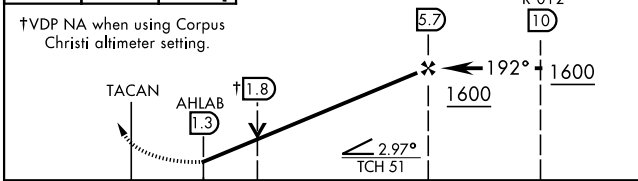
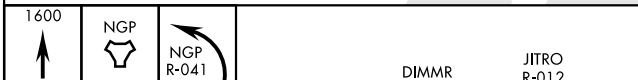
AL-98 [USN] CORPUS CHRISTI NAS (TRUAX FLD) (KNGP)

When local altimeter setting not received, use Corpus Christi altimeter setting. MISSED APPROACH: Climb to 1600 direct NGP TACAN and turn left to intercept R-041 to RYNOL and hold.

ATIS ★ 127.9 290.9	CORPUS CHRISTI APP CON 128.675 343.75	NAVY CORPUS TOWER ★ 134.85 340.2	GND CON 118.7 257.85	CLNC DEL 314.3	ASR/ PAR
------------------------------	---	--	--------------------------------	--------------------------	-------------

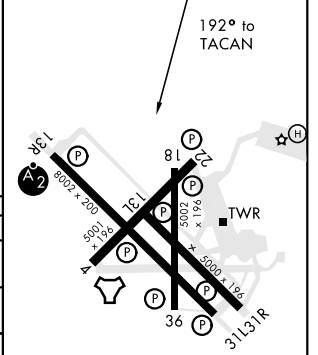


EMERG SAFE ALT 100 NM 11,100



ELEV 19	TDZE 19
---------	---------

CATEGORY	A	B	C	D
S-18	360-1	341	(400-1)	
C CIRCLING	480-1	461 (500-1)	540-1½ 521 (600-1½)	620-2 601 (700-2)
CORPUS CHRISTI ALTIMETER SETTING				
S-18	400-1	381 (400-1)	400-1⅙	381 (400-1⅙)
C CIRCLING	500-1 481 (500-1)	520-1 501 (600-1)	580-1½ 561 (600-1½)	660-2 641 (700-2)



HIRL Rwy 4-22, 13R-31L
HIRL Rwy 13L-31R, 18-36
REIL Rwy 4-22, 13L-31R, 18-36, 31L

CORPUS CHRISTI, TEXAS 27°42'N-97°17'W CORPUS CHRISTI NAS (TRUAX FLD) (KNGP)

Amdt 1 16JUL20

TACAN RWY 18

SC-3, 02 DEC 2021 to 30 DEC 2021

SC-3, 02 DEC 2021 to 30 DEC 2021