

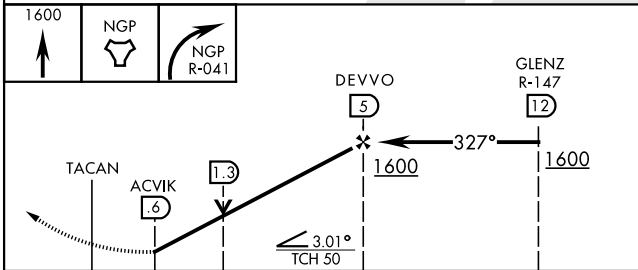
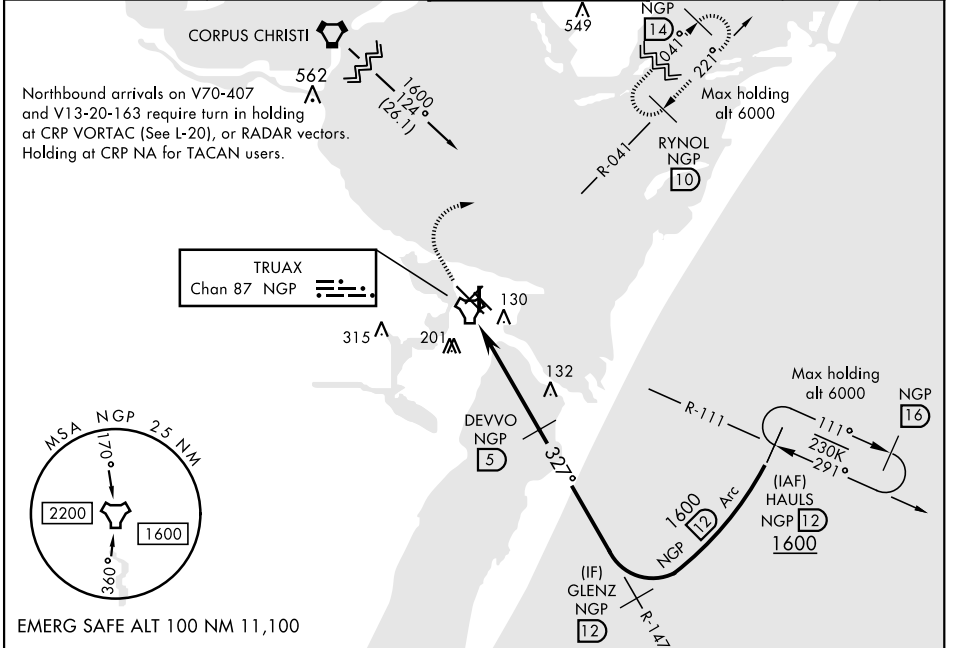
CORPUS CHRISTI, TEXAS

TACAN RWY 36

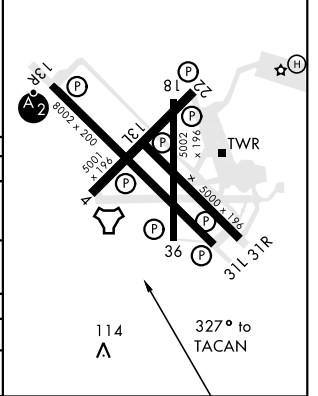
TACAN NGP Chan 87	APCH CRS 327°	Rwy ldg TDZE Arprt Elev 5002 19 19
-----------------------------	-------------------------	--

AL-98 [USN] CORPUS CHRISTI NAS (TRUAX FLD) (KNGP)

<p>▼ When local altimeter setting not received, use Corpus Christi altimeter setting.</p>		<p>MISSED APPROACH: Climb to 1600 direct NGP TACAN and turn right to intercept R-041 and hold.</p>			
<p>ATIS ★ 127.9 290.9</p>	<p>CORPUS CHRISTI APP CON 128.675 343.75</p>	<p>NAVY CORPUS TOWER ★ 134.85 340.2</p>	<p>GND CON 118.7 257.85</p>	<p>CLNC DEL 314.3</p>	<p>ASR/ PAR</p>



ELEV 19	TDZE 19
<p>HIRL Rwy 4-22, 13R-31L HIRL Rwy 13L-31R, 18-36 REIL Rwy 4-22, 13L-31R, 18-36, 31L</p>	



CATEGORY	A		B		C		D	
S-36	420-1	401 (500-1)	420-1½	401 (500-1½)	420-1½	401 (500-1½)	620-2	601 (700-2)
C CIRCLING	480-1	461 (500-1)	540-1½	521 (600-1½)	540-1½	521 (600-1½)	620-2	601 (700-2)
CORPUS CHRISTI ALTIMETER SETTING								
S-36	460-1	441 (500-1)	460-1½	441 (500-1½)	460-1½	441 (500-1½)	620-2	601 (700-2)
C CIRCLING	500-1	481 (500-1)	520-1	501 (600-1)	580-1½	561 (600-1½)	660-2	641 (700-2)

CORPUS CHRISTI, TEXAS 27°42'N-97°17'W CORPUS CHRISTI NAS (TRUAX FLD) (KNGP)

Amdt 1 16JUL20

TACAN RWY 36

SC-3, 02 DEC 2021 to 30 DEC 2021

SC-3, 02 DEC 2021 to 30 DEC 2021