

TACAN X RWY 31L

TACAN NGP Chan 87	APCH CRS 291°	Rwy ldg TDZE Arpt Elev 8002 18 19
-----------------------------	-------------------------	---

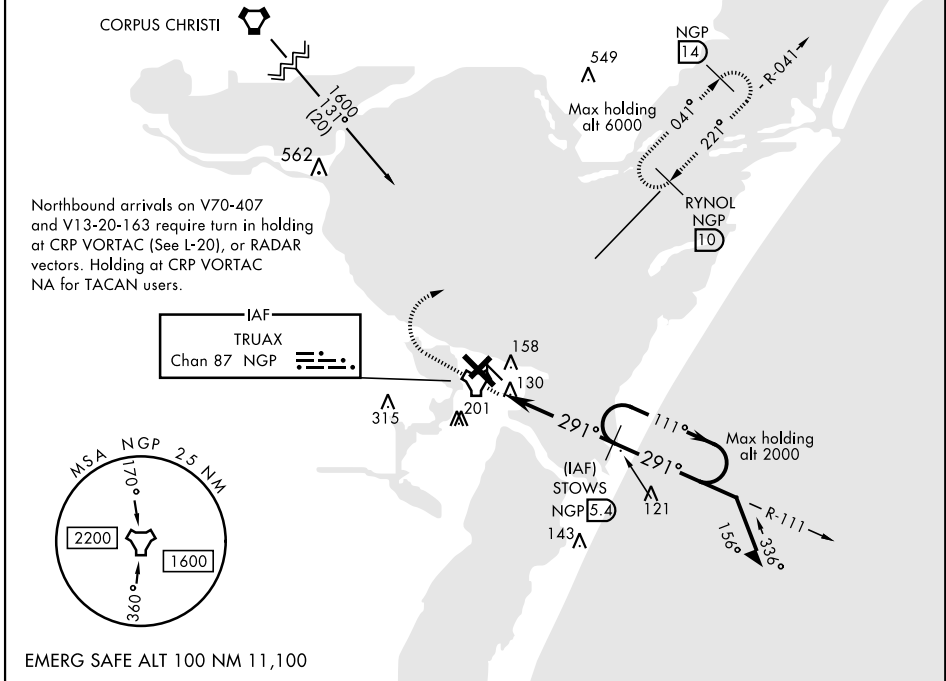
AL-98 [USN]

CORPUS CHRISTI NAS (TRUAX FLD) (KNGP)

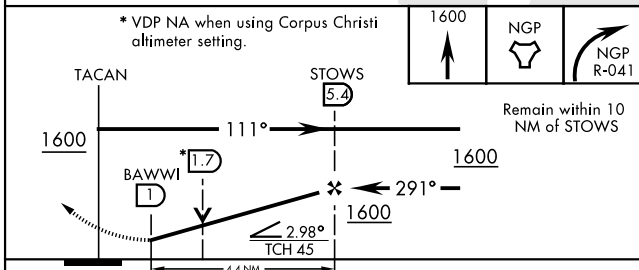
▼ When local altimeter setting not received, use Corpus Christi altimeter setting.

MISSED APPROACH: Climb to 1600 direct NGP TACAN and turn right to intercept R-041 and hold.

ATIS ★ 127.9 290.9	CORPUS CHRISTI APP CON 128.675 343.75	NAVY CORPUS TOWER ★ 134.850 340.2	GND CON 118.7 257.85	CLNC DEL 314.3	ASR/ PAR
------------------------------	---	---	--------------------------------	--------------------------	-------------

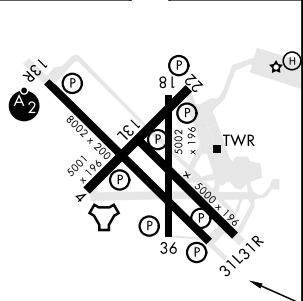


EMERG SAFE ALT 100 NM 11,100



ELEV 19	TDZE 18
---------	---------

CATEGORY	A	B	C	D
S-31L	420-1 402 (500-1)		420-1½ 402 (500-1½)	
CIRCLING	480-1 461 (500-1)		540-1½ 521 (600-1½)	620-2 601 (700-2)
CORPUS CHRISTI ALTIMETER SETTING				
S-31L	460-1 442 (500-1)		460-1¾ 442 (500-1¾)	
CIRCLING	500-1 481 (500-1)	520-1 501 (600-1)	580-1½ 561 (600-1½)	660-2 641 (700-2)



HIRL Rwy 4-22, 13R-31L
HIRL Rwy 13L-31R, 18-36
REIL Rwy 4-22, 13L-31R, 18-36, 31L

FAF to MAP 4.4 NM

Knots	60	90	120	150	180
Min:Sec	4:24	2:56	2:12	1:46	1:28

CORPUS CHRISTI, TEXAS
Amdt 1 16JUL20

27°42'N-97°17'W

CORPUS CHRISTI NAS (TRUAX FLD) (KNGP)

TACAN X RWY 31L

SC-3, 02 DEC 2021 to 30 DEC 2021

SC-3, 02 DEC 2021 to 30 DEC 2021