

CORPUS CHRISTI, TEXAS

VOR/DME or TACAN Y RWY 13R

VORTAC CRP 115.5 Chan 102	APCH CRS 139°	Rwy Idg TDZE 13 Arpt Elev 19	8002
---	-------------------------	--	-------------

AL-98 [USN]

CORPUS CHRISTI NAS (TRUAX FLD) (KNGP)

∇ * When ALS inop, increase CAT AB vis to 1 mile, CAT CD vis to 1½ miles.
** When ALS inop, increase CAT AB vis to 1 mile, CAT CD vis to 1¾ miles.



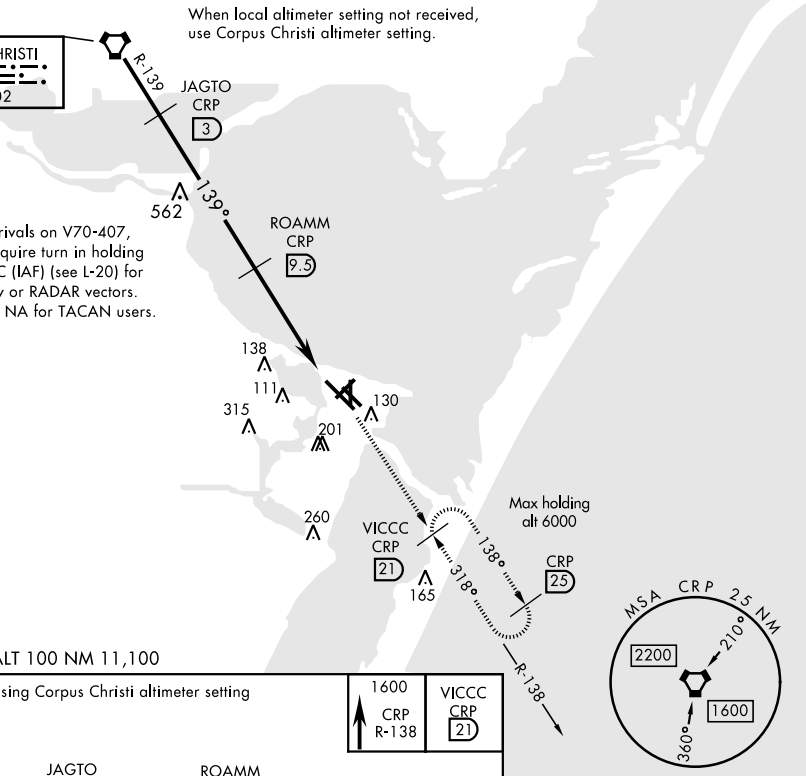
MISSED APPROACH: Climb to 1600 on CRP VORTAC R-138 to VICCC and hold.

ATIS ★ 127.9 290.9	CORPUS CHRISTI APP CON 128.675 343.75	NAVY CORPUS TOWER ★ 134.85 340.2	GND CON 118.7 257.85	CLNC DEL 314.3	ASR/ PAR
------------------------------	---	--	--------------------------------	--------------------------	----------

When local altimeter setting not received, use Corpus Christi altimeter setting.

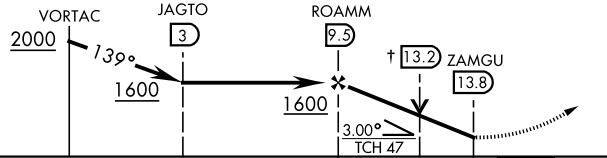
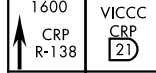
IAF
CORPUS CHRISTI
115.5 CRP
Chan 102

Northbound arrivals on V70-407, V13-20-163 require turn in holding at CRP VORTAC (IAF) (see L-20) for procedure entry or RADAR vectors. Holding at CRP NA for TACAN users.



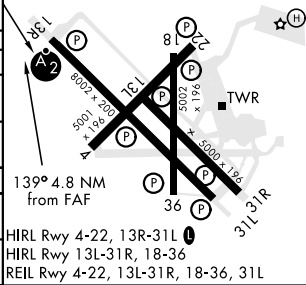
EMERG SAFE ALT 100 NM 11,100

† VDP NA when using Corpus Christi altimeter setting



ELEV 19	TDZE 13
---------	---------

CATEGORY	A	B	C	D
S-13R *	420-¾	407 (500-¾)	420-1	407 (500-1)
CIRCLING	480-1	461 (500-1)	540-1½ 521 (600-1½)	620-2 601 (700-2)
CORPUS CHRISTI ALTIMETER SETTING				
S-13R **	460-¾	447 (500-¾)	460-1	447 (500-1)
CIRCLING	500-1 481 (500-1)	520-1 501 (600-1)	580-1½ 561 (600-1½)	660-2 641 (700-2)



CORPUS CHRISTI, TEXAS

27°42'N-97°17'W

CORPUS CHRISTI NAS (TRUAX FLD) (KNGP)

Amtd 1 16JUL20

VOR/DME or TACAN Y RWY 13R

SC-3, 02 DEC 2021 to 30 DEC 2021

SC-3, 02 DEC 2021 to 30 DEC 2021