

CORPUS CHRISTI, TEXAS

VOR/DME or TACAN Y RWY 31L

VORTAC CRP 115.5 Chan 102	APCH CRS 318°	Rwy ldg TDZE 18 Arprt Elev 19
---	-------------------------	---

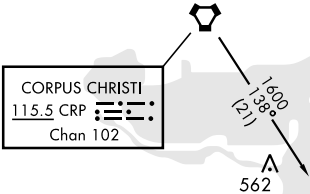
AL-98 [USN]

CORPUS CHRISTI NAS (TRUAX FLD) (KNGP)

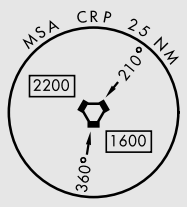
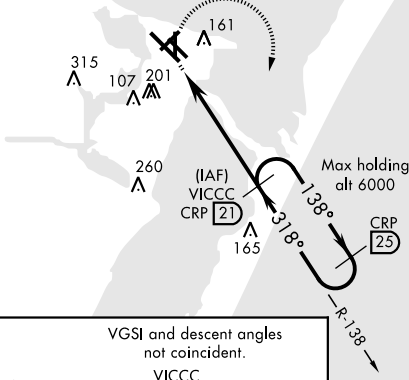
When Local altimeter setting not received, use Corpus Christi altimeter setting.

MISSED APPROACH: Climb to 600 hdg 318°, then climbing right turn to 1600 to intercept CRP VORTAC R-138 to VICCC and hold.

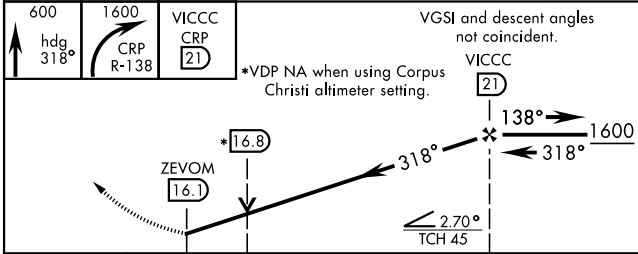
ATIS ★ 127.9 290.9	CORPUS CHRISTI APP CON 128.675 343.75	NAVY CORPUS TOWER ★ 134.85 340.2	GND CON 118.7 257.85	CLNC DEL 314.3	ASR/ PAR
------------------------------	---	--	--------------------------------	--------------------------	-------------



Northbound arrivals on V70-407 and V13-20-163 require turn in holding at CRP VORTAC (See L-20), or RADAR vectors. Holding at CRP NA for TACAN users.

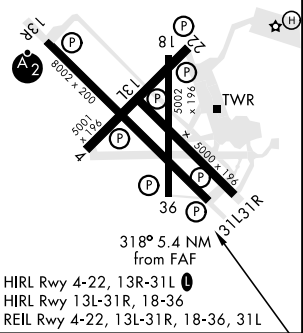


EMERG SAFE ALT 100 NM 11,100



ELEV 19	TDZE 18
---------	---------

CATEGORY	A	B	C	D
S-31L	440-1	422 (500-1)	440-1¼	422 (500-1¼)
CIRCLING	480-1	461 (500-1)	540-1½ 521 (600-1½)	620-2 601 (700-2)
CORPUS CHRISTI ALTIMETER SETTING				
S-31L	480-1	462 (500-1)	480-1¾	462 (500-1¾)
CIRCLING	500-1 481 (500-1)	520-1 501 (600-1)	580-1½ 561 (600-1½)	660-2 641 (700-2)



CORPUS CHRISTI, TEXAS
Amdt 1 16JUL20

27° 42' N - 97° 17' W CORPUS CHRISTI NAS (TRUAX FLD) (KNGP)

VOR/DME or TACAN Y RWY 31L

SC-3, 02 DEC 2021 to 30 DEC 2021

SC-3, 02 DEC 2021 to 30 DEC 2021