

WAAS CH 45529 W 16A	APP CRS 162°	Rwy Idg TDZE Apt Elev	5969 33 34
---	------------------------	-----------------------------	---------------------------------------

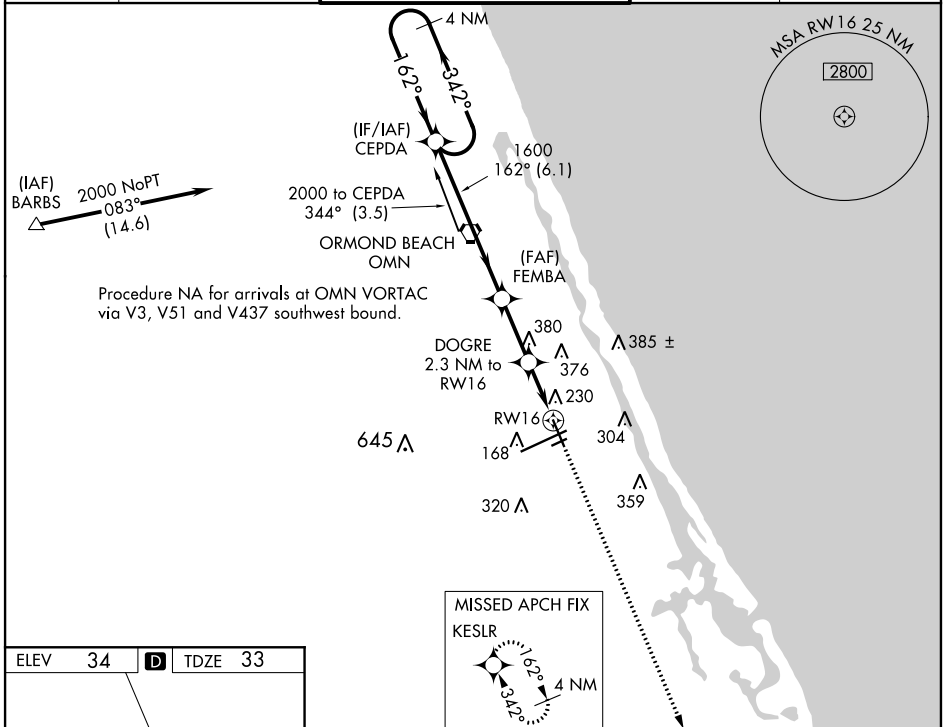
RNAV (GPS) RWY 16

DAYTONA BEACH INTL (DAB)

**Baro-VNAV NA below -15° C (5° F).
DME/DME RNP-0.3 NA.
Helicopter visibility reduction below ¾ SM NA.**

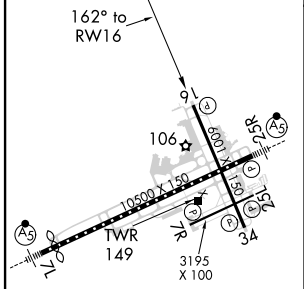
MISSED APPROACH: Climb to 1700 direct KESLR and hold.

ATIS 132.875	DAYTONA APP CON 125.8 269.075	DAYTONA TOWER 118.1 257.8 (Rwys 7R-25L) 120.7 257.8 (Rwys 7L-25R, 16-34)	GND CON 121.9 348.6	CLNC DEL 119.3
------------------------	---	--	-------------------------------	--------------------------

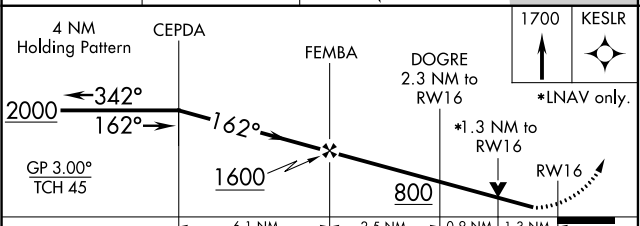


Procedure NA for arrivals at OMN VORTAC via V3, V51 and V437 southwest bound.

ELEV 34	D	TDZE 33
---------	----------	---------



TDZ/CL Rwy 7L
HIRL Rwy 7L-25R
REIL Rwys 7R, 16, 25L and 34
MIRL Rwys 7R-25L and 16-34



CATEGORY	A	B	C	D
LPV DA		358-1¼	325 (400-1¼)	
LNAV/VNAV DA		479-1½	446 (500-1½)	
LNAV MDA	500-1	467 (500-1)	500-1¼ 467 (500-1¼)	500-1½ 467 (500-1½)
C CIRCLING	540-1½	506 (600-1½)	680-1¾ 646 (700-1¾)	700-2 666 (700-2)

SE-3, 02 DEC 2021 to 30 DEC 2021

SE-3, 02 DEC 2021 to 30 DEC 2021