

APP CRS	Rwy Idg	3195
250°	TDZE	33
	Apt Elev	34

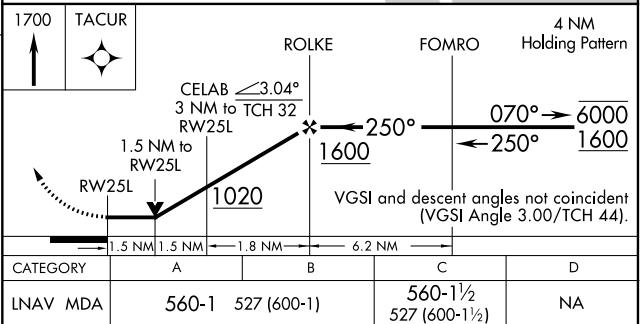
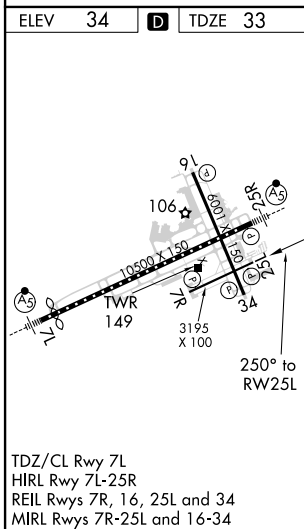
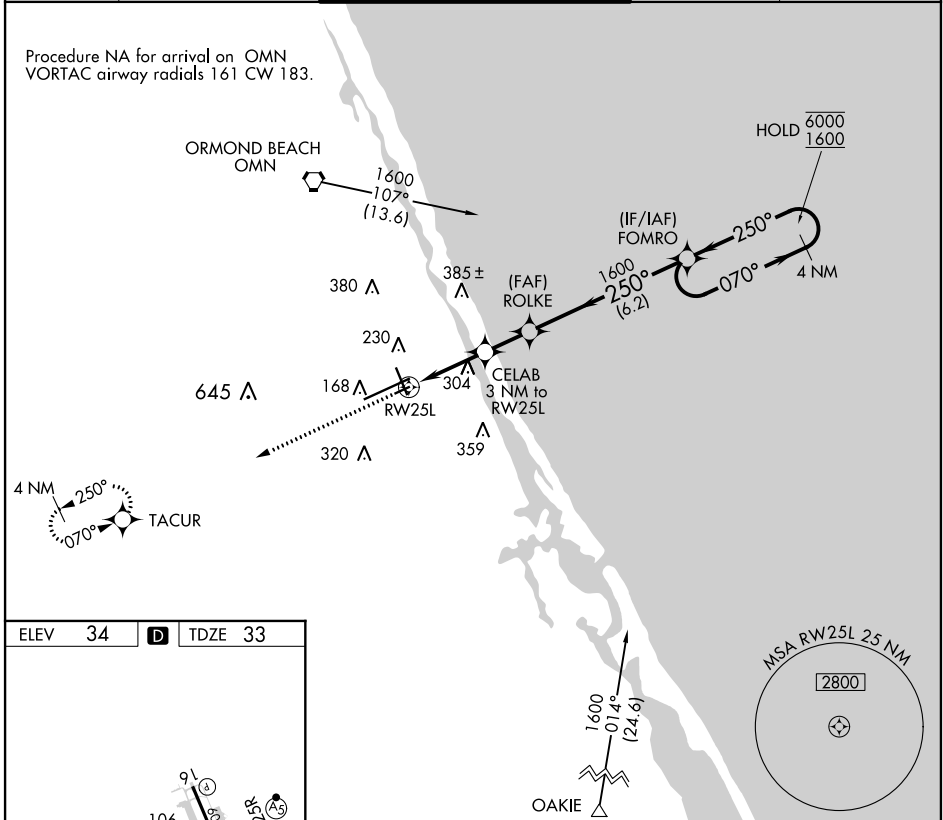
RNAV (GPS) RWY 25L

DAYTONA BEACH INTL (DAB)

RNP APCH-GPS.		MISSED APPROACH: Climb to 1700 direct TACUR and hold.	
<p>▼ Rwy 25L helicopter visibility reduction below 3/4 SM NA.</p>			

ATIS 132.875	DAYTONA APP CON 125.8 269.075	DAYTONA TOWER 118.1 257.8 (Rwy 7R-25L) 120.7 257.8 (Rwys 7L-25R, 16-34)	GND CON 121.9 348.6	CLNC DEL 119.3
------------------------	---	---	-------------------------------	--------------------------

Procedure NA for arrival on OMN
VORTAC airway radials 161 CW 183.



SE-3, 02 DEC 2021 to 30 DEC 2021

SE-3, 02 DEC 2021 to 30 DEC 2021