

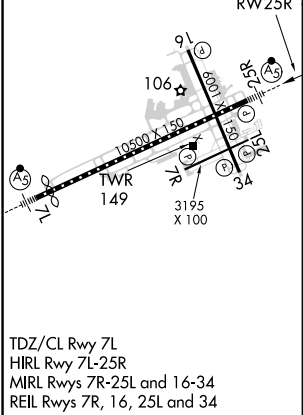
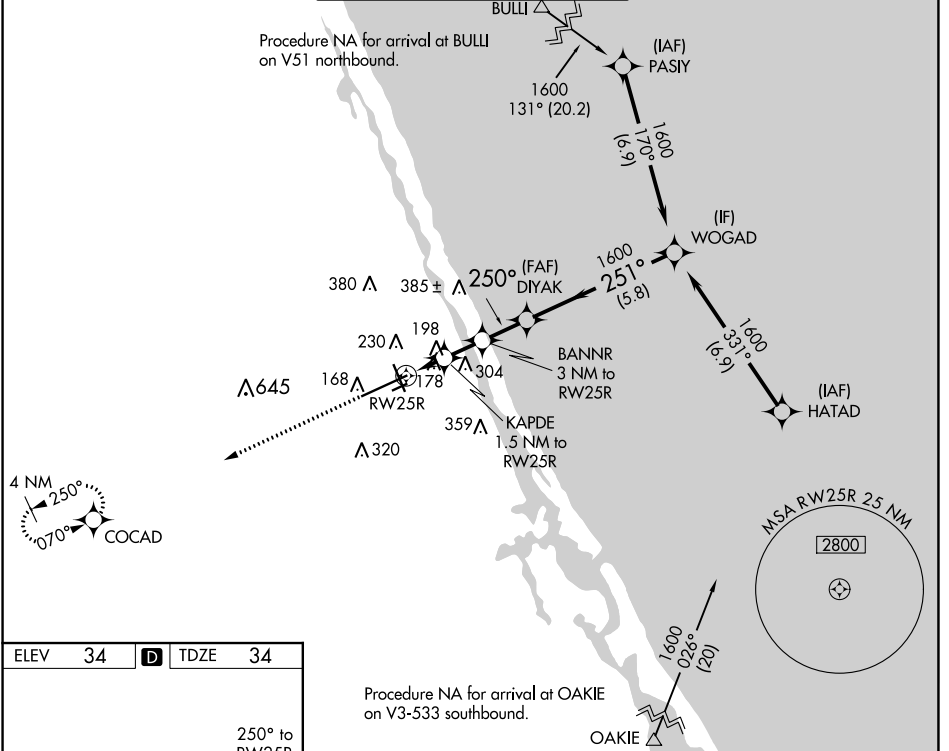
WAAS CH 77533 W25A	APP CRS 250°	Rwy Idg 10293 TDZE 34 Apt Elev 34
--	------------------------	--

RNAV (GPS) RWY 25R

DAYTONA BEACH INTL (DAB)

DME/DME RNP-0.3 NA.		MALSR 	MISSED APPROACH: Climb to 1700 direct COCAD and hold.	
---------------------	--	-----------	---	--

ATIS 132.875	DAYTONA APP CON 125.8 269.075	DAYTONA TOWER 118.1 257.8 (Rwys 7R-25L) 120.7 257.8 (Rwys 7L-25R, 16-34)	GND CON 121.9 348.6	CLNC DEL 119.3
------------------------	---	--	-------------------------------	--------------------------



Procedure NA for arrival at OAKIE on V3-533 southbound.

1700	COCAD	VGSI and descent angles not coincident (VGSI Angle 3.00/TCH 72)		
		DIYAK	WOGAD	
KAPDE 1.5 NM to RWY 25R BANNR 3 NM to RWY 25R TCH 55 250°		1600	251° 1600	
1.5 NM 1.5 NM 1.8 NM 5.8 NM				
CATEGORY	A	B	C	D
LP MDA	440-1/2	407 (500-1/2)	440-3/4	407 (500-3/4)
LNAV MDA	460-1/2	426 (500-1/2)	460-3/4	426 (500-3/4)
C CIRCLING	540-1	506 (600-1)	680-1 3/4 646 (700-1 3/4)	700-2 666 (700-2)

TDZ/CL Rwy 7L
HIRL Rwy 7L-25R
MIRL Rwys 7R-25L and 16-34
REIL Rwys 7R, 16, 25L and 34