

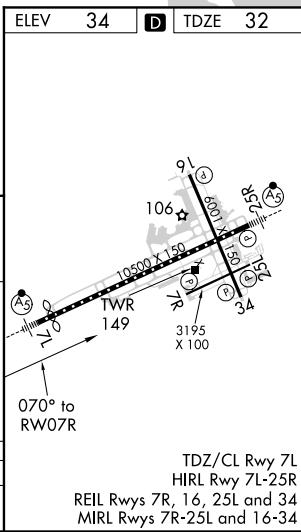
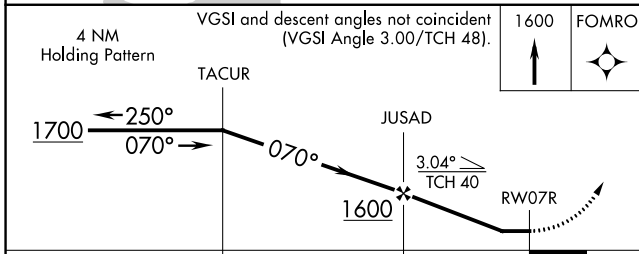
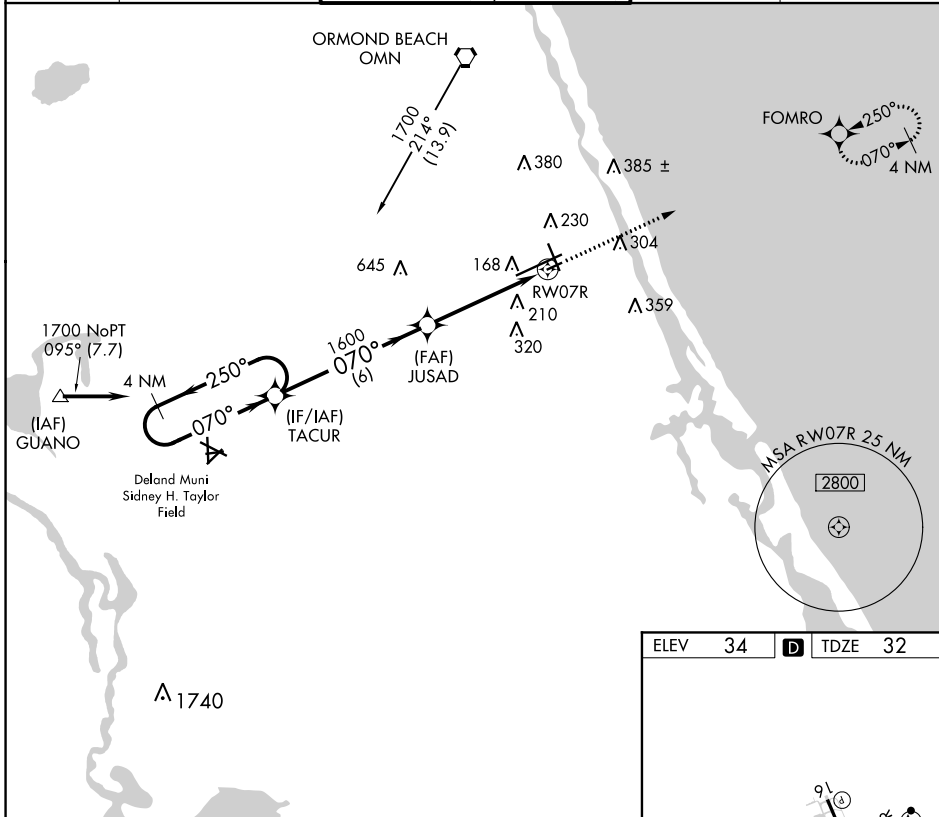
APP CRS	Rwy Idg	3195
070°	TDZE	32
	Apt Elev	34

RNAV (GPS) RWY 7R

DAYTONA BEACH INTL (DAB)

RNP APCH.	MISSED APPROACH: Climb to 1600 direct FOMRO WP and hold.
▼ Rwy 7R helicopter visibility reduction below ¾ SM NA.	

ATIS 132.875	DAYTONA APP CON 125.8 269.075	DAYTONA TOWER 118.1 257.8 (Rwy 7R-25L) 120.7 257.8 (Rwys 7L-25R, 16-34)	GND CON 121.9 348.6	CLNC DEL 119.3
------------------------	---	---	-------------------------------	--------------------------



SE-3, 02 DEC 2021 to 30 DEC 2021

SE-3, 02 DEC 2021 to 30 DEC 2021