

(CLVIN2.CLVIN) 21112

AL-119 (FAA)

DETROIT METRO WAYNE COUNTY (DTW)

# CLVIN TWO DEPARTURE (RNAV)

Departure Routes

DETROIT, MICHIGAN

**TOP ALTITUDE:  
17000**

D-ATIS 118.125

CLNC DEL 120.65

CPDLC

GND CON

121.8 (NW) 119.45 (NE)

132.725 (SW) 119.25 (SE)

METRO TOWER

118.4 317.725 (Rwys 3L/R, 21L/R, 27R)

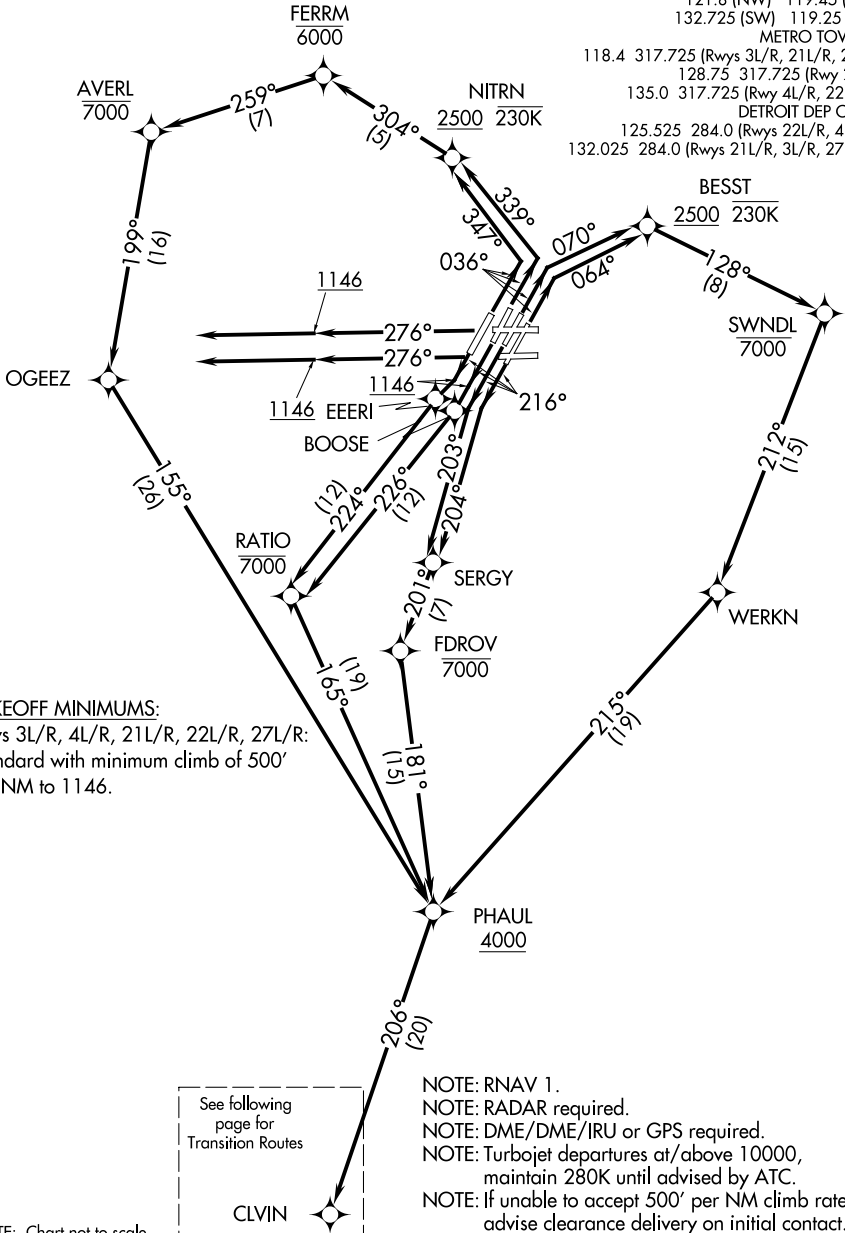
128.75 317.725 (Rwy 27L)

135.0 317.725 (Rwy 4L/R, 22L/R)

DETROIT DEP CON

125.525 284.0 (Rwys 22L/R, 4L/R)

132.025 284.0 (Rwys 21L/R, 3L/R, 27L/R)



**TAKEOFF MINIMUMS:**

Rwys 3L/R, 4L/R, 21L/R, 22L/R, 27L/R:  
Standard with minimum climb of 500'  
per NM to 1146.

NOTE: RNAV 1.

NOTE: RADAR required.

NOTE: DME/DME/IRU or GPS required.

NOTE: Turbojet departures at/above 10000,

maintain 280K until advised by ATC.

NOTE: If unable to accept 500' per NM climb rate,  
advise clearance delivery on initial contact.

NOTE: Chart not to scale.

EC-1, 02 DEC 2021 to 30 DEC 2021

EC-1, 02 DEC 2021 to 30 DEC 2021