

(HAYLL.HAYLL3) 21112

# HAYLL THREE ARRIVAL (RNAV)

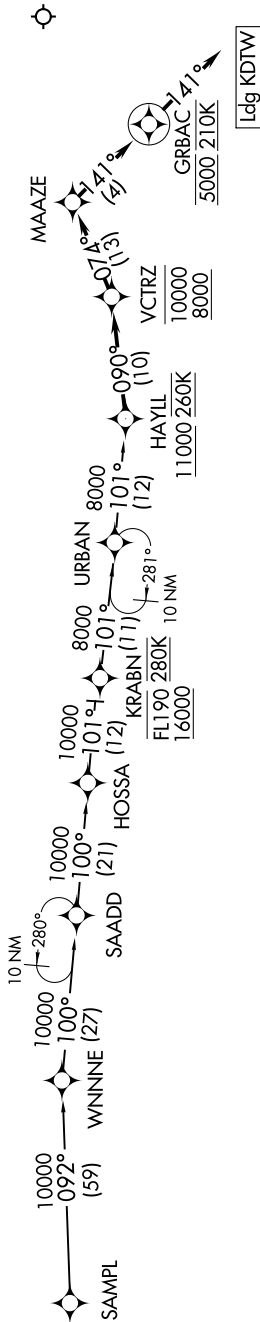
AL-119 (FAA)

DETROIT METRO WAYNE COUNTY (DTW)  
DETROIT, MICHIGAN

EC-1, 02 DEC 2021 to 30 DEC 2021

D-ATIS  
133.675  
DETROIT APP CON  
124.975 284.0

- NOTE: RADAR required.
- NOTE: RNAV 1.
- NOTE: DME/DME/IRU or GPS required.
- NOTE: Expect Rwy 4L.
- NOTE: For use when DTW landing north.
- NOTE: When DTW landing south or west, file and expect the VCTRZ RNAV STAR.
- NOTE: For use by flights departing MDW, SBN, AZO, MCI, LAS, LAX, PHX, SAN, SNA airports only, or as assigned by ATC.



## ARRIVAL ROUTE DESCRIPTION

HOSSA TRANSITION (HOSSA.HAYLL3)

SAMPL TRANSITION (SAMPL.HAYLL3)

From HAYLL on track 090° to cross VCTRZ between 8000 and 10000, then on track 074° to MAAZE, then on track 141° to cross GRBAC at 5000 and at 210K, then on track 141°. Expect RADAR vectors to final approach course.

## LOST COMMUNICATIONS

From GRBAC, execute RNAV (GPS) Y RWY 4L approach or ILS Y RWY 4L approach.

NOTE: Chart not to scale.

# HAYLL THREE ARRIVAL (RNAV)

(HAYLL.HAYLL3) 10OCT19

DETROIT, MICHIGAN  
DETROIT METRO WAYNE COUNTY (DTW)

EC-1, 02 DEC 2021 to 30 DEC 2021