

(HHOWE3.HHOWE) 21112

HHOWE THREE DEPARTURE (RNAV)

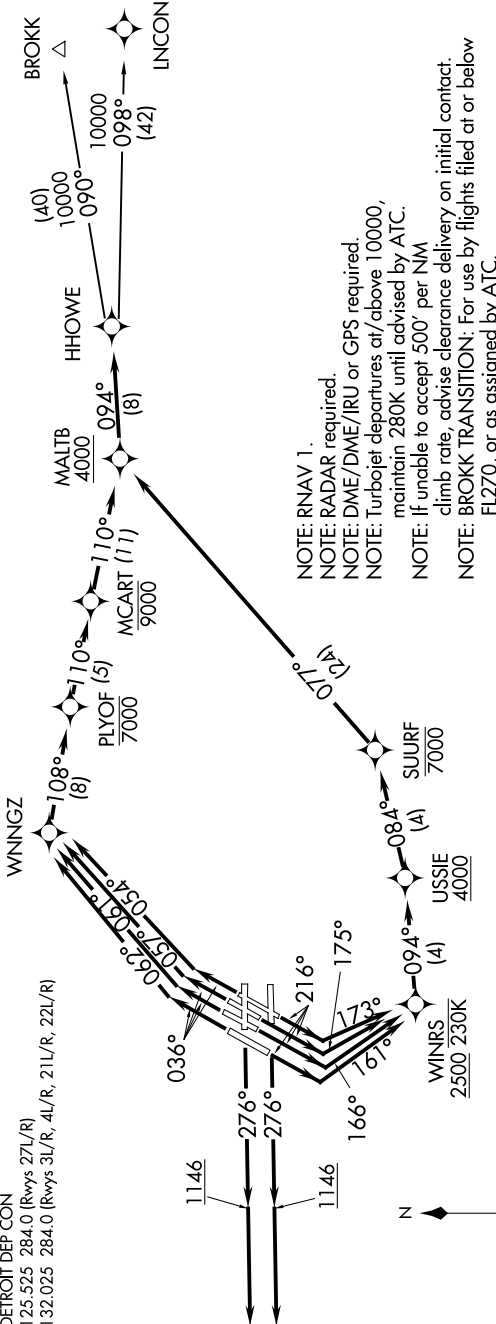
DETROIT METRO WAYNE COUNTY (DTW)

AL-119 (FAA)

DETROIT, MICHIGAN

TOP ALTITUDE:
17000

D-ATIS 118.125
 CLNC DEL 120.65
 CPDLC
 GND CON 121.8 (NW) 119.45 (NE)
 132.725 (SW) 119.25 (SE)
 METRO TOWER 118.4 317.725 (Rwys 3L/R, 21L/R, 27R)
 128.75 317.725 (Rwy 27L)
 135.0 317.725 (Rwy 4L/R, 22L/R)
 DETROIT DEP CON 125.525 284.0 (Rwys 27L/R)
 132.025 284.0 (Rwys 3L/R, 4L/R, 21L/R, 22L/R)



NOTE: RNAV 1.
 NOTE: RADAR required.
 NOTE: DME/DME/IRU or GPS required.
 NOTE: Turbojet departures at/above 10000, maintain 280K until advised by ATC.
 NOTE: If unable to accept 500' per NM climb rate, advise clearance delivery on initial contact.
 NOTE: BROKK TRANSITION: For use by flights filed at or below FL270, or as assigned by ATC.

TAKEOFF MINIMUMS:
 Rwys 3L/R, 4L/R, 21L/R, 22L/R, 27L/R: Standard with minimum climb of 500' per NM to 1146.

(NARRATIVE ON FOLLOWING PAGE)

NOTE: Chart not to scale.

HHOWE THREE DEPARTURE (RNAV)
(HHOWE3.HHOWE) 05DEC19

DETROIT, MICHIGAN
DETROIT METRO WAYNE COUNTY (DTW)

EC-1, 02 DEC 2021 to 30 DEC 2021

EC-1, 02 DEC 2021 to 30 DEC 2021