

LOC/DME I-EJR 111.5 Chan 52	APP CRS 216°	Rwy Idg TDZE 632 Apt Elev 645	10001
---	------------------------	---	--------------

ILS RWY 21L (SA CAT I & II)

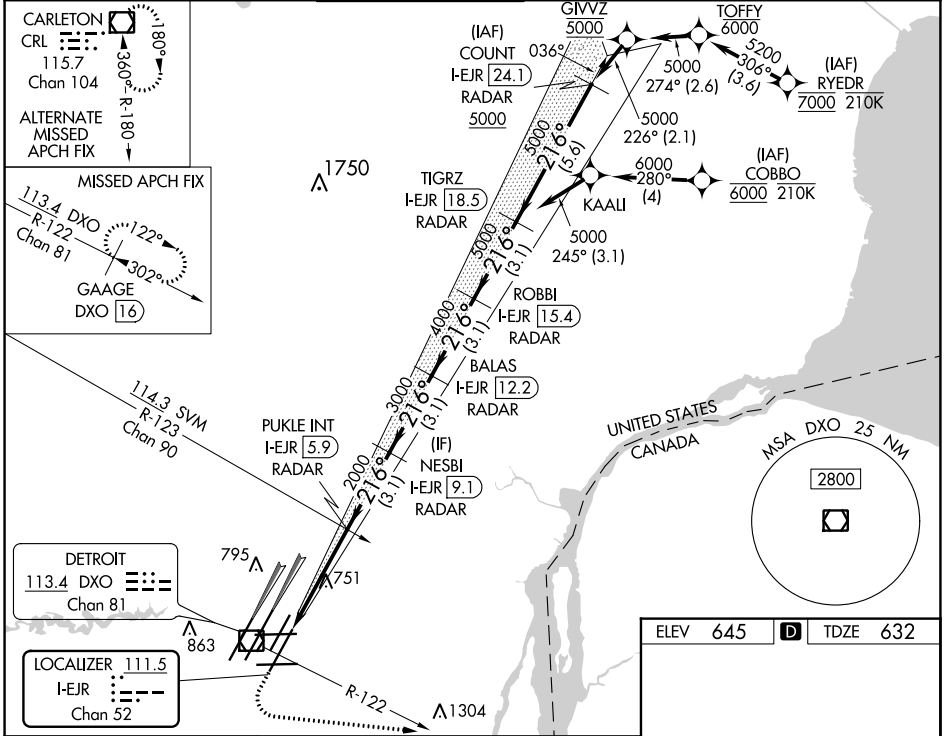
DETROIT METRO WAYNE COUNTY (DTW)

From RYEDR, COBBO: RNAV 1-DME/DME/IRU or GPS required. Aircraft not DME/DME/IRU or GPS equipped - RADAR required for procedure entry. DME or RADAR required.

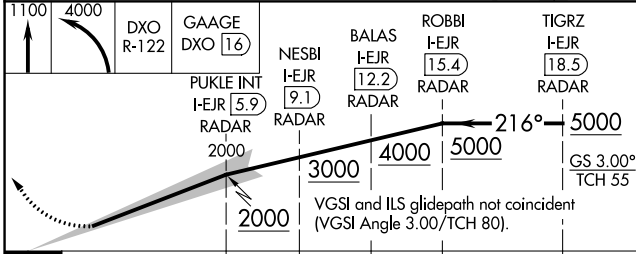
MALSRS MISSED APPROACH: Climb to 1100 then climbing left turn to 4000 on DXO R-122 to GAAGE/DXO 16 DME and hold, continue climb-in-hold to 4000.

Simultaneous approach authorized. SA CAT I: Requires specific OPSPEC, MSPEC, or LOA approval and use of HUD to DH. SA CAT II: Reduced lighting; requires specific OPSPEC, MSPEC, or LOA approval and use of autoland or HUD to touchdown.

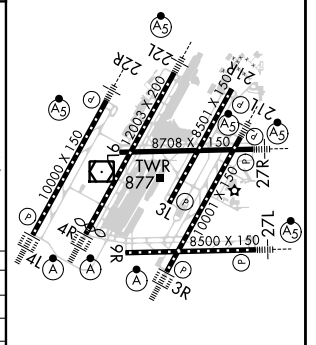
D-ATIS 133.675	DETROIT APP CON 125.15 284.0	METRO TOWER 118.4 317.725	GND CON 121.8 (NW) 119.45 (NE) 132.725 (SW) 119.25 (SE)	CLNC DEL 120.65	CPDLC
--------------------------	--	-------------------------------------	---	---------------------------	-------



ELEV 645	D TDZE 632
-----------------	--------------------------



CATEGORY	A	B	C	D
S-ILS 21L	SA CAT I	RA 148/14	150	DA 782
S-ILS 21L	SA CAT II	RA 98/12	100	DA 732



HIRL all runways
REL Rwy 3L, 9L, 9R and 21R
TDZ/CL Rwy 3R, 4L, 4R and 22R

SA CATEGORY I & II ILS - SPECIAL AIRCREW & AIRCRAFT CERTIFICATION REQUIRED

EC-1, 02 DEC 2021 to 30 DEC 2021

EC-1, 02 DEC 2021 to 30 DEC 2021