

LOC/DME I-DWC 110.7 Chan 44	APP CRS 216°	Rwy Idg TDZE Apt Elev	12003 637 645
---	------------------------	-----------------------------	--

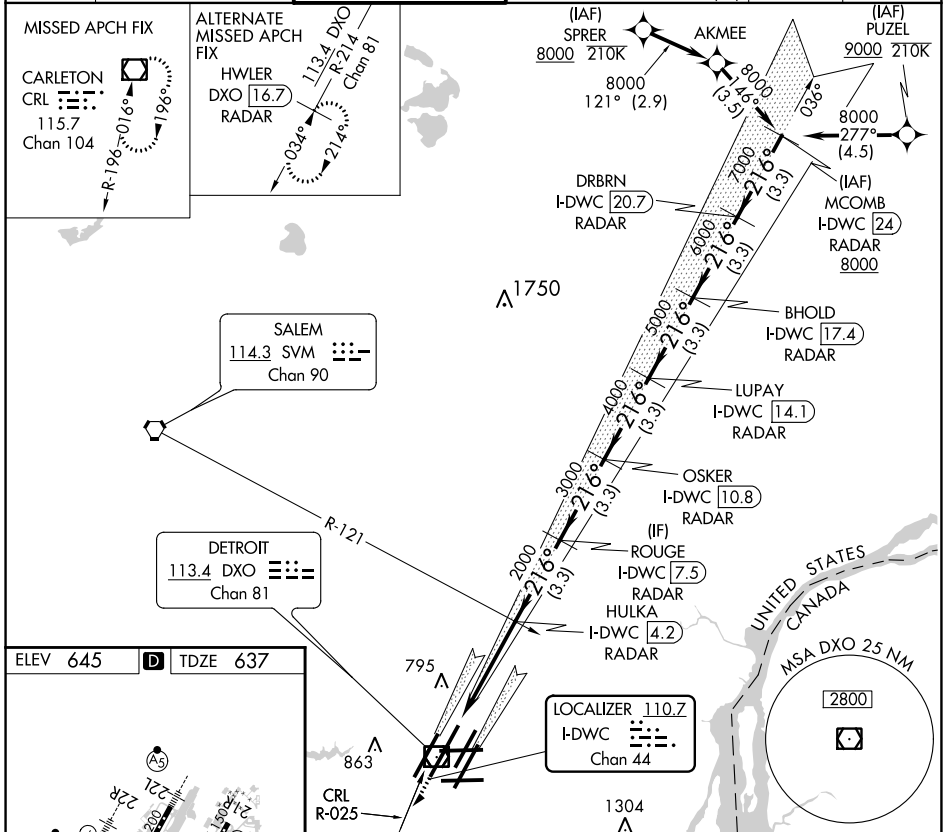
ILS RWY 22L (SA CAT I)
DETROIT METRO WAYNE COUNTY (DTW)

DME or RADAR required. RNAV 1-DME/DME/IRU or RADAR required for procedure entry.

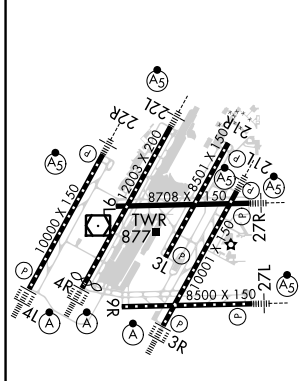
Simultaneous approach authorized.
Requires specific OPSPEC, MSPEC, or LOA approval and use of HUD to DH.

MALS R (AS) MISSED APPROACH: Climb to 4000 on heading 216° and CRL VOR/DME R-025 to CRL VOR/DME and hold, continue climb-in-hold to 4000.

D-ATIS 133.675	DETROIT APP CON 124.05 284.0	METRO TOWER 128.125 317.725	GND CON 121.8 (NW) 132.725 (SW)	119.45 (NE) 119.25 (SE)	CLNC DEL 120.65	CPDLC
--------------------------	--	---------------------------------------	---	--	---------------------------	-------



ELEV 645	D	TDZE 637
----------	----------	----------



TDZ/CL Rwy 3R, 4L, 4R and 22R
REIL Rwy 3L, 9L, 9R and 21R
HIRL all runways

4000	CRL R-025	CRL	OSKER I-DWC (10.8) RADAR	LUPAY I-DWC (14.1) RADAR	BHOLD I-DWC (17.4) RADAR	DRBRN I-DWC (20.7) RADAR	MCOMB I-DWC (24) RADAR
3000	HULKA I-DWC (4.2) RADAR	ROUGE I-DWC (7.5) RADAR	OSKER I-DWC (10.8) RADAR	LUPAY I-DWC (14.1) RADAR	BHOLD I-DWC (17.4) RADAR	DRBRN I-DWC (20.7) RADAR	MCOMB I-DWC (24) RADAR
2000	HULKA I-DWC (4.2) RADAR	ROUGE I-DWC (7.5) RADAR	OSKER I-DWC (10.8) RADAR	LUPAY I-DWC (14.1) RADAR	BHOLD I-DWC (17.4) RADAR	DRBRN I-DWC (20.7) RADAR	MCOMB I-DWC (24) RADAR
1000	HULKA I-DWC (4.2) RADAR	ROUGE I-DWC (7.5) RADAR	OSKER I-DWC (10.8) RADAR	LUPAY I-DWC (14.1) RADAR	BHOLD I-DWC (17.4) RADAR	DRBRN I-DWC (20.7) RADAR	MCOMB I-DWC (24) RADAR

112011	4.3 NM	3.3 NM	3.3 NM	3.3 NM	3.3 NM	3.3 NM
CATEGORY	A	B	C	D		
S-ILS 22L	SA CAT I		RA 148/14	150 DA 787		

SA CATEGORY I ILS- SPECIAL AIRCREW & AIRCRAFT CERTIFICATION REQUIRED

EC-1, 02 DEC 2021 to 30 DEC 2021

EC-1, 02 DEC 2021 to 30 DEC 2021