

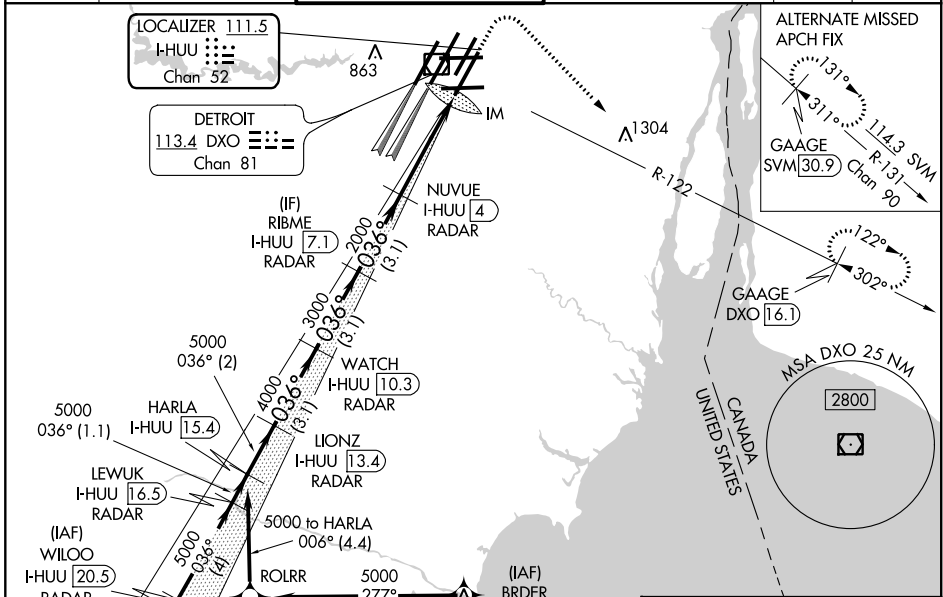
LOC/DME I-HUU 111.5 Chan 52	APP CRS 036°	Rwy ldg 10001 TDZE 633 Apt Elev 645
---	------------------------	--

ILS RWY 3R (SA CAT I)

DETROIT METRO WAYNE COUNTY (DTW)

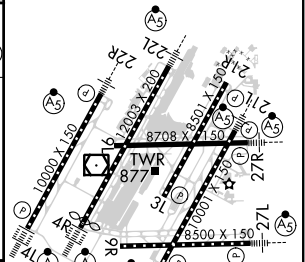
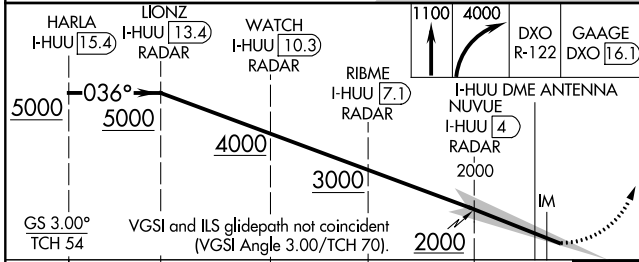
RNAV 1-GPS.	ALSF-2 	MISSED APPROACH: Climb to 1100 then climbing right turn to 4000 on DXO VOR/DME R-122 to GAAGE/DXO 16.1 DME and hold.
MÉRCA and BRDR: RNAV 1-DME/DME/IRU or GPS required. Aircraft not DME/DME/IRU or GPS equipped - RADAR required for procedure entry.		
Simultaneous approach authorized. DME required. Requires specific OPSPEC, MSPEC, or LOA approval and use of HUD to DH.		

D-ATIS 133.675	DETROIT APP CON 125.15 284.0	METRO TOWER 118.4 317.725	GND CON 121.8 (NW) 119.45 (NE) 132.725 (SW) 119.25 (SE)	CLNC DEL 120.65	CPDLC
--------------------------	--	-------------------------------------	---	---------------------------	-------



ELEV 645	D TDZE 633
----------	-------------------

HIRL all runways
REIL Rwy's 3L, 9L, 9R and 21R
TDZ/CL Rwy's 3R, 4L, 4R and 22R



2 NM	3.1 NM	3.1 NM	3.1 NM	4.1 NM	10307
------	--------	--------	--------	--------	-------

CATEGORY	A	B	C	D
----------	---	---	---	---

S-ILS 3R RA 153/14 150 DA 783

SA CATEGORY I ILS - SPECIAL AIRCREW & AIRCRAFT CERTIFICATION REQUIRED

EC-1, 02 DEC 2021 to 30 DEC 2021

EC-1, 02 DEC 2021 to 30 DEC 2021