

LOC/DME I-DWC <b>110.7</b> Chan <b>44</b>	APP CRS <b>216°</b>	Rwy Idg TDZE Apt Elev	<b>12003</b> <b>637</b> <b>645</b>
---	------------------------	-----------------------------	--

# ILS or LOC RWY 22L

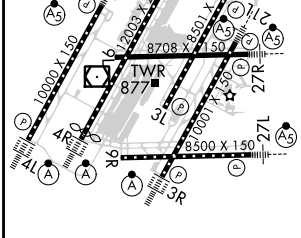
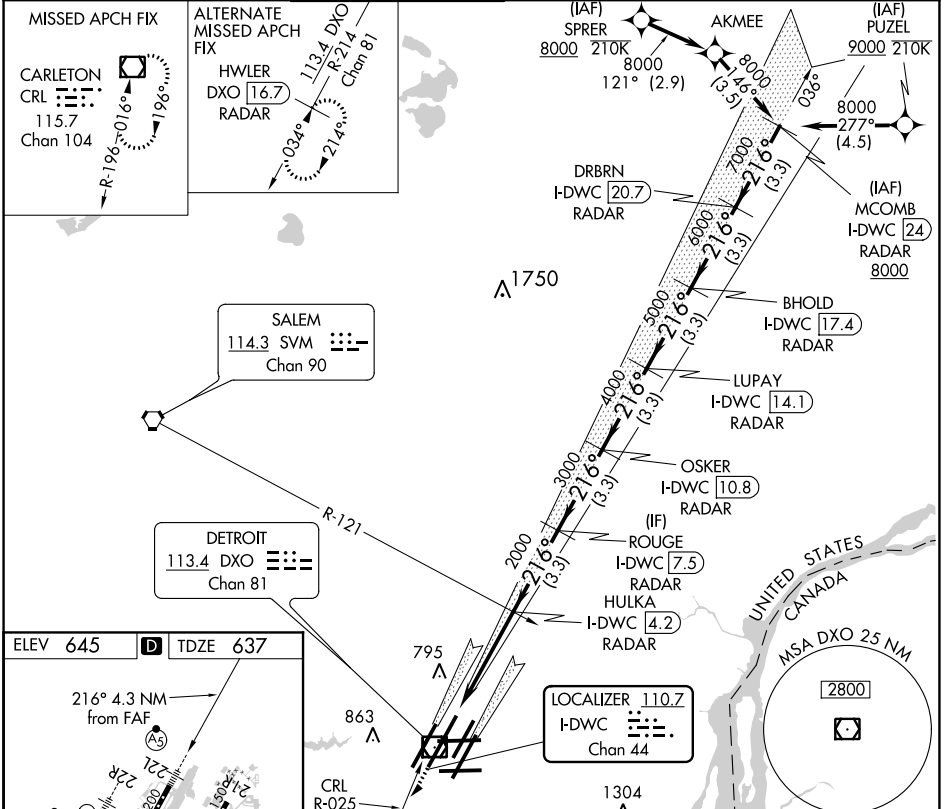
DETROIT METRO WAYNE COUNTY (DTW)

DME or RADAR required.  
RNAV 1-DME/DME/IRU or RADAR required for procedure entry.

Simultaneous approach authorized.  
#RVR 1800 authorized with use of FD or AP or HUD to DA.

MALS R MISSED APPROACH: Climb to 4000 on heading 216° and CRL VOR/DME R-025 to CRL VOR/DME and hold, continue climb-in-hold to 4000.

D-ATIS <b>133.675</b>	DETROIT APP CON <b>124.05 284.0</b>	METRO TOWER <b>128.125 317.725</b>	GND CON <b>121.8</b> (NW) <b>132.725</b> (SW)	<b>119.45</b> (NE) <b>119.25</b> (SE)	CLNC DEL <b>120.65</b>	CPDLC
--------------------------	--	---------------------------------------	---	--	---------------------------	-------



ELEV 645	TDZE 637	* LOC only		BHOLD I-DWC 17.4	DRBRN I-DWC 20.7	MCOMB I-DWC 24
4000	hdg 216°	CRL R-025	CRL	LUPAY I-DWC 14.1	OSKER I-DWC 10.8	HULKA I-DWC 4.2
I-DWC DME ANTENNA	I-DWC 0.2	HULKA I-DWC 4.2	ROUGE I-DWC 7.5	OSKER I-DWC 10.8	ROUGE I-DWC 7.5	LUPAY I-DWC 14.1
I-DWC 2000	* I-DWC 0.9	2000	3000	4000	5000	6000
1 NM	3.3 NM	3.3 NM	3.3 NM	3.3 NM	3.3 NM	3.3 NM

TDZ/CL Rwy 3R, 4L, 4R and 22R REIL Rwy 3L, 9L, 9R and 21R HIRL all runways	CATEGORY	A	B	C	D
	S-ILS 22L #	837/24 200 (200-½)			
	S-LOC 22L	1020/24	383 (400-½)	1020/35	383 (400-½)
	CIRCLING	1180-1	535 (600-1)	1180-1½ 535 (600-1½)	1240-2 595 (600-2)

EC-1, 02 DEC 2021 to 30 DEC 2021

EC-1, 02 DEC 2021 to 30 DEC 2021